

Product datasheet

Recombinant Human CCK4 protein (His tag) ab241239

[3 Images](#)

Description

Product name Recombinant Human CCK4 protein (His tag)

Purity > 90 % SDS-PAGE.

Expression system Yeast

Accession [Q13308](#)

Protein length Protein fragment

Animal free No

Nature Recombinant

Species Human

Sequence

```
AMVFIKQPSSQDALQGRRALLRCEVEAPGPVHVYWLLDGA
PVQDTERRFA
QGSSLSFAAVDRLQDSGTFQCVARDDVTGEEARSANAS
FNIKWIEAGPVV
LKHPASEAEIQPQTQVTLRCHIDGHRPTYQWFRDGTPLS
DGQSNHTVSS
KERNLTLRPAGPEHSGLYSCCAHSAFGQACSSQNFTLSIA
DESFARVLA
PQDVVVARYEEAMFHCQFSAQPPPSLQWLFEDETPITNR
SRPPLRRTV
FANGSLLLQVRPRNAGIYRCIGQGQRGPPILLEATLHLAEIE
DMPLFEP
RVFTAGSEERTCLPPKGLPEPSVWWEHAGVRLPTHGR
VYQKGHELVLAN
IAESDAGVYTCHAANLAGQRRQDVNITVATVPSWLKKPQD
SQLEEGKPGY
LDCLTQATPKPTVVWYRNQMLISEDSRFEVFKNGTLRINS
VEYDGTWYR
CMSSTPAGSIEAQRVQVLEKLFKFTPPPQPQCMEFDKE
ATVPCSATGRE
KPTIKWERADGSSLPEWVTDNAGTLHFARVTRDDAGNYT
CIASNGPQQQI
RAHVQLTVAVFITFKVEPERTTVYQGHTALLQCEAQGDPK
PLIQWKGKDR
ILDPTKLGPRMHIFQNGSLVIHDVAPEDSGRYTCIAGNSCNI
```

Predicted molecular weight	77 kDa including tags
Amino acids	31 to 704
Tags	His tag N-Terminus

Specifications

Our **Abpromise guarantee** covers the use of **ab241239** in the following tested applications.

The application notes include recommended starting dilutions; optimal dilutions/concentrations should be determined by the end user.

Applications	SDS-PAGE Mass Spectrometry
Mass spectrometry	LC-MS/MS
Form	Liquid

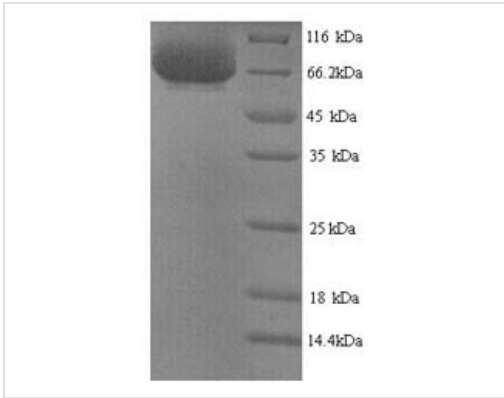
Preparation and Storage

Stability and Storage	Shipped at 4°C. Store at -20°C or -80°C. Avoid freeze / thaw cycle. pH: 7.2 Constituents: Tris buffer, 50% Glycerol (glycerin, glycerine)
------------------------------	---

General Info

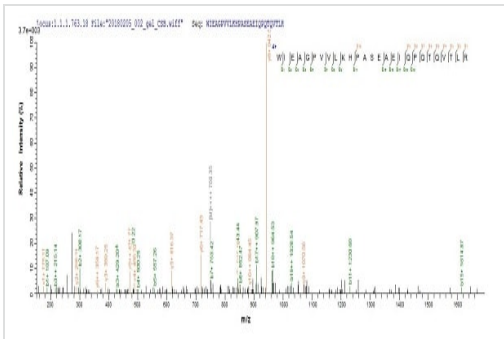
Function	Inactive tyrosine kinase involved in Wnt signaling pathway. Component of both the non-canonical (also known as the Wnt/planar cell polarity signaling) and the canonical Wnt signaling pathway. Functions in cell adhesion, cell migration, cell polarity, proliferation, actin cytoskeleton reorganization and apoptosis. Has a role in embryogenesis, epithelial tissue organization and angiogenesis.
Tissue specificity	Highly expressed in lung, liver, pancreas, kidney, placenta and melanocytes. Weakly expressed in thyroid gland, ovary, brain, heart and skeletal muscle. Also expressed in erythroleukemia cells. But not expressed in colon.
Sequence similarities	Belongs to the protein kinase superfamily. Tyr protein kinase family. Insulin receptor subfamily. Contains 7 Ig-like C2-type (immunoglobulin-like) domains. Contains 1 protein kinase domain.
Domain	The protein kinase domain is predicted to be catalytically inactive.
Post-translational modifications	MMP14 cleaves PTK7 between Pro-621 and Leu-622 generating an N-terminal soluble (70 kDa) fragment and a membrane C-terminal (50 kDa) fragment. Proteolysis by MMP14 regulates PTK7 function in non-canonical Wnt signaling pathway.
Cellular localization	Membrane. Cell junction. Colocalizes with MMP14 at cell junctions. Also localizes at the leading edge of migrating cells.

Images



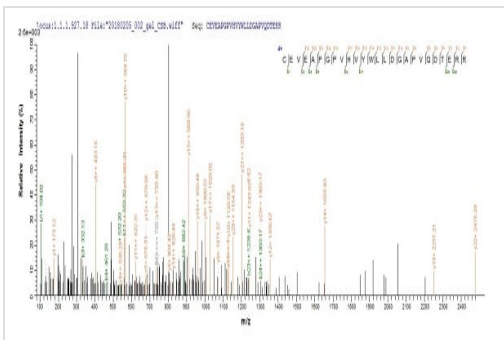
SDS-PAGE - Recombinant Human CCK4 protein (His tag) (ab241239)

(Tris-Glycine gel) Discontinuous SDS-PAGE (reduced) with 5% enrichment gel and 15% separation gel analysis of ab241239.



Mass Spectrometry - Recombinant Human CCK4 protein (His tag) (ab241239)

Based on the SEQUEST from database of Yeast host and target protein, the LC-MS/MS Analysis result of ab241239 could indicate that this peptide derived from Yeast-expressed Homo sapiens (Human) CCK4.



Mass Spectrometry - Recombinant Human CCK4 protein (His tag) (ab241239)

Based on the SEQUEST from database of Yeast host and target protein, the LC-MS/MS Analysis result of ab241239 could indicate that this peptide derived from Yeast-expressed Homo sapiens (Human) CCK4.

Please note: All products are "FOR RESEARCH USE ONLY. NOT FOR USE IN DIAGNOSTIC PROCEDURES"

Our Abpromise to you: Quality guaranteed and expert technical support

- Replacement or refund for products not performing as stated on the datasheet
- Valid for 12 months from date of delivery

- Response to your inquiry within 24 hours
- We provide support in Chinese, English, French, German, Japanese and Spanish
- Extensive multi-media technical resources to help you
- We investigate all quality concerns to ensure our products perform to the highest standards

If the product does not perform as described on this datasheet, we will offer a refund or replacement. For full details of the Abpromise, please visit <https://www.abcam.com/abpromise> or contact our technical team.

Terms and conditions

- Guarantee only valid for products bought direct from Abcam or one of our authorized distributors