

Recombinant Human CCT2 protein (Tagged) ab235076

1 Image

Description

Product name	Recombinant Human CCT2 protein (Tagged)		
Purity	> 90 % SDS-PAGE.		
Expression system	Escherichia coli		
Accession	<u>P78371-1</u>		
Protein length	Full length protein		
Animal free	No		
Nature	Recombinant		
Species	Human		
Sequence	ASLSLAPVNIKAGADEERAETARLTSFIGAIAIGDLVKSTL GPKGMDKI LLSSGRDASLMVTNDGATILKNIGVDNPAAKVLVDMSRVQ DDEVGDGTTS VTVLAAELLREAESLIAKKIHPQTIAGWREATKAAREALLS SAVDHGSD EVKFRQDLMNIAGTTLSSKLLTHHKDHFTKLAVEAVLRK GSGNLEAII IKKLGGSLADSYLDEGFLLDKKIGVNQPKRIENAKILANTG MDTDKIKI FGSRVRVDSTAKVAEIEHAEKEKMKEKVERILKHGINCFIN RQLIYNYPE QLFGAAGVMAIEHADFAGVERLALVTGGEIASTFDHPELV KLGSCKLIEE VMIGEDKLIHFSGVALGEACTVLRGATQQILDEAERSLHD ALCVLAQTV KDSRTVYGGGCSEMLMAHAVTQLANRTPGKEAVAMESY AKALRMLPTIIA DNAGYDSADLVAQLRAAHSEGNTTAGLDMREGTIGDMAIL GITESFQVKR QVLLSAAEAAEVILRVDNIIKAAPRKRVDPDHHPC		
Predicted molecular weight	73 kDa including tags		
Amino acids	2 to 535		
Tags	His tag N-Terminus		

Additional sequence information Full length mature chain without initiator methionine. N-terminal 6xHis-SUMO-tagged.

Specifications

Our **Abpromise guarantee** covers the use of **ab235076** in the following tested applications.

The application notes include recommended starting dilutions; optimal dilutions/concentrations should be determined by the end user.

Applications	SDS-PAGE
Form	Liquid
Additional notes	This product was previously labelled as TCP1 beta

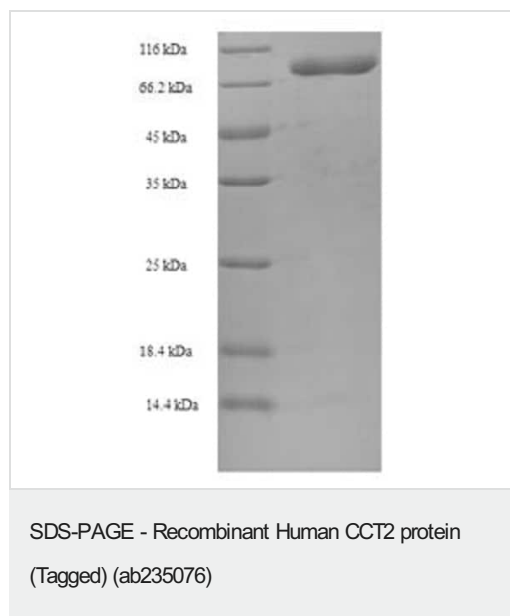
Preparation and Storage

Stability and Storage	Shipped at 4°C. Store at -20°C or -80°C. Avoid freeze / thaw cycle. pH: 7.2 Constituents: Tris buffer, 50% Glycerol (glycerin, glycerine)
------------------------------	---

General Info

Function	Molecular chaperone; assists the folding of proteins upon ATP hydrolysis. As part of the BBS/CCT complex may play a role in the assembly of BBSome, a complex involved in ciliogenesis regulating transports vesicles to the cilia. Known to play a role, in vitro, in the folding of actin and tubulin.
Sequence similarities	Belongs to the TCP-1 chaperonin family.
Cellular localization	Cytoplasm.

Images



ab235076 analyzed by (Tris-Glycine gel) discontinuous SDS-PAGE (reduced) with 5% enrichment gel and 15% separation gel.

Please note: All products are "FOR RESEARCH USE ONLY. NOT FOR USE IN DIAGNOSTIC PROCEDURES"

Our Abpromise to you: Quality guaranteed and expert technical support

- Replacement or refund for products not performing as stated on the datasheet
- Valid for 12 months from date of delivery
- Response to your inquiry within 24 hours

- We provide support in Chinese, English, French, German, Japanese and Spanish
- Extensive multi-media technical resources to help you
- We investigate all quality concerns to ensure our products perform to the highest standards

If the product does not perform as described on this datasheet, we will offer a refund or replacement. For full details of the Abpromise, please visit <https://www.abcam.com/abpromise> or contact our technical team.

Terms and conditions

- Guarantee only valid for products bought direct from Abcam or one of our authorized distributors