

Product datasheet

Recombinant Human CD10 protein ab155720

1 Image

Description

Product name Recombinant Human CD10 protein

Purity > 95 % SDS-PAGE.

Endotoxin level < 1.000 Eu/μg

Expression system HEK 293 cells

Accession **P08473**

Protein length Protein fragment

Animal free No

Nature Recombinant

Species Human

Sequence

YDDGICKSSDCIKSAARLIQNMDATTEPCTDFFKYACGGW
LKRNVIPETS
SRYGNFDILRDELEVVLKDVLEPKTEDIVAVQKAKALYRS
CINESAIDS
RGGEPLKLLPDIYGWPVATENWEQKYGASWTAEKIAIQL
NSKYGKKVLI
NLFVGTDDKNSVNHVIHQPRGLPSRDYECTGMKEAC
TAYVDFMIS
VARLIRQEERLPIDENQLALEMKNVMELEKEIANATAKPED
RNDPMLLYN
KMTLAQIQNNFSLEINGKPFWSLNFTEIMSTVNISITNEED
VVVYAPEY
LTKLKPILTKYSARDLQNLMSWRFIMDLVSSLRSTYKESRN
AFRKALYGT
TSETATWRRCANYVNGNMENAVGRLYVEAAFAGESKHV
VEDLIAQIREVF
IQTLLDLDLWMDAETKKRAEEKALAIKERIGYPDDIVSNDNK
LNNEYLELN
YKEDEYFENIIQNLKFSQSKQLKKLREKVDKDEWISGAAV
VNAFYSSGRN
QVFPAGILQPPFFSAQQSNSLNYGGIGMVIGHEITHGFDDN
GRNFNKDG
DLVDWWTQQSASNFKEQSQCMVYQYGNFSWDLAGGQH
LNGINTLGENIAD

NGGLGQAYRAYQNYIKKNGEEKLLPGLDLNHNKQLFFLNFA
QVWCGTYRPE
YAVNSIKTDVHSPGNFRIGTLQNSAEFSEAFHCRKNSYMN
PEKKCRVW

Predicted molecular weight	107 kDa including tags
Amino acids	52 to 750
Tags	Fc tag N-Terminus
Additional sequence information	This protein carries a human IgG1 Fc tag at the N-terminus.

Specifications

Our **Abpromise guarantee** covers the use of **ab155720** in the following tested applications.

The application notes include recommended starting dilutions; optimal dilutions/concentrations should be determined by the end user.

Applications	SDS-PAGE
Form	Lyophilized

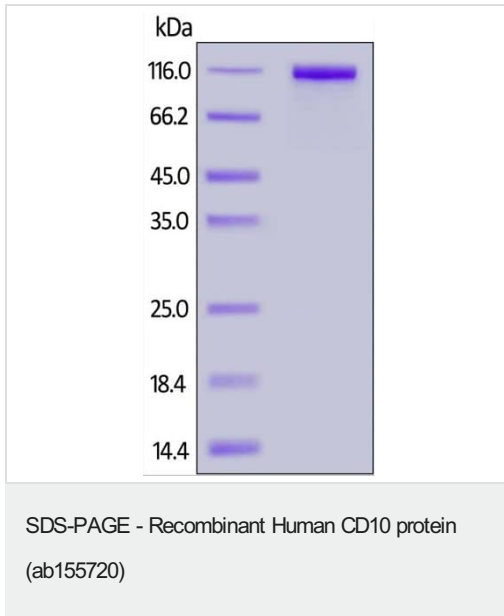
Preparation and Storage

Stability and Storage	Shipped at 4°C. Store at +4°C short term (1-2 weeks). Upon delivery aliquot. Store at -20°C or -80°C. Avoid freeze / thaw cycle. pH: 7.4 Constituents: Tris, Glycine, L-Arginine, Sodium chloride
Reconstitution	Reconstitute with sterile deionized water to a concentration of 400 µg/ml.

General Info

Function	Thermolysin-like specificity, but is almost confined on acting on polypeptides of up to 30 amino acids. Biologically important in the destruction of opioid peptides such as Met- and Leu-enkephalins by cleavage of a Gly-Phe bond. Able to cleave angiotensin-1, angiotensin-2 and angiotensin 1-9. Involved in the degradation of atrial natriuretic factor (ANF). Displays UV-inducible elastase activity toward skin preelastic and elastic fibers.
Sequence similarities	Belongs to the peptidase M13 family.
Cellular localization	Cell membrane.

Images



ab155720 on SDS-PAGE under reducing conditions. The gel was stained overnight with Coomassie Blue. The protein migrates as 106-120 kDa under reducing conditions due to glycosylation.

Please note: All products are "FOR RESEARCH USE ONLY. NOT FOR USE IN DIAGNOSTIC PROCEDURES"

Our Abpromise to you: Quality guaranteed and expert technical support

- Replacement or refund for products not performing as stated on the datasheet
- Valid for 12 months from date of delivery
- Response to your inquiry within 24 hours
- We provide support in Chinese, English, French, German, Japanese and Spanish
- Extensive multi-media technical resources to help you
- We investigate all quality concerns to ensure our products perform to the highest standards

If the product does not perform as described on this datasheet, we will offer a refund or replacement. For full details of the Abpromise, please visit <https://www.abcam.com/abpromise> or contact our technical team.

Terms and conditions

- Guarantee only valid for products bought direct from Abcam or one of our authorized distributors