

Recombinant human CD105 protein ab54338

2 References 3 Images

Description

Product name	Recombinant human CD105 protein
Purity	> 95 % SDS-PAGE. Purity: > 95% (SDS-PAGE and visualized by Silverstain). Affinity purified.
Expression system	Insect cells
Accession	<u>P17813</u>
Protein length	Protein fragment
Animal free	No
Nature	Recombinant
Species	Human
Sequence	ETVHCDLQPVGPERGEVTTYTTSQVSKGCVAQAPNAILEV HVLFLFPTGP SQLELTQASKQNGTWPREVLLVLSVNSSVFLHLQALGIP LHLAYNSSLV TFQEPPGVNTTELPSPFKTQILEWAAERGPITSAAELNDP QSILLRLGQA QGSLSFCMLEASQDMGRTLEWRPRTPALVRGCHLEGVA GHKEAHILRVLP GHSAGPRTVTVKVELSCAPGDLDVAVLILQGPPYVSWLIDA NHNMQIWTG EYSFKIFPEKNIRGFKLPDTPQGLLGEARMLNASVASFVE LPLASMSL HASSCGGRLQTSPAPIQTTPPKDTCSPELLMSLIQTKCAD DAMTLVLKKE LVAHLKCTITGLTFWDPSCEAEDRGDKFVLRSA YSSCGM QVSASMISNEA VVNILSSSSPQRKKVHCLNMDLSFQLGLYLSPHFLQASN TIEPGQQSFV QVRVSPSVSEFLLQLDSCHLDLGPEGGTVELIQGRAAKG NCVSLLSPSPE GDPRFSFLLHFYTVPIPKTGTLSCTVALRPKTGSQDQEVH RTVFMRLNII SPDLSGCTSHHHHHH
Amino acids	26 to 584
Tags	His tag C-Terminus

Specifications

Our **Abpromise guarantee** covers the use of **ab54338** in the following tested applications.

The application notes include recommended starting dilutions; optimal dilutions/concentrations should be determined by the end user.

Applications	SDS-PAGE
	ELISA
	Western blot

Form	Lyophilized
-------------	-------------

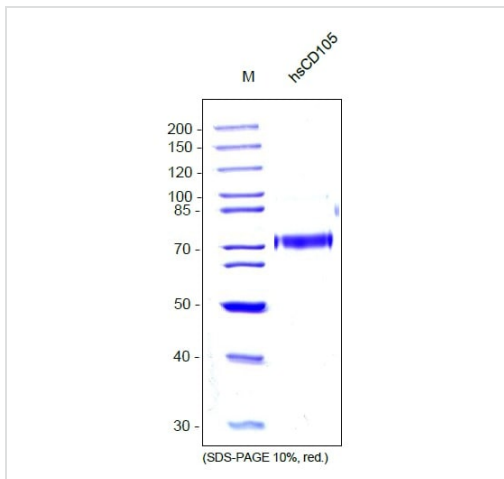
Preparation and Storage

Stability and Storage	Shipped at 4°C. Store at -20°C. Avoid freeze / thaw cycle. This product is an active protein and may elicit a biological response in vivo, handle with caution.
Reconstitution	Reconstitute in PBS or medium to a concentration not lower than 50 µg/ml.

General Info

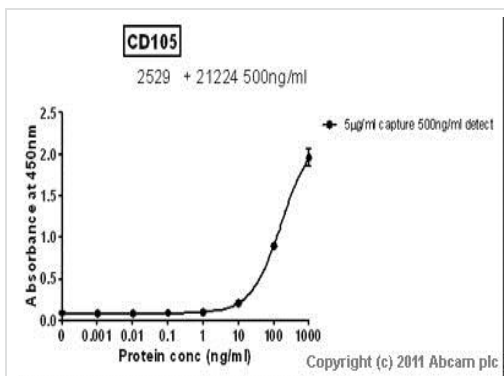
Function	Major glycoprotein of vascular endothelium. May play a critical role in the binding of endothelial cells to integrins and/or other RGD receptors.
Tissue specificity	Endoglin is restricted to endothelial cells in all tissues except bone marrow.
Involvement in disease	Defects in ENG are the cause of hereditary hemorrhagic telangiectasia type 1 (HHT1) [MIM:187300, 108010]; also known as Osler-Rendu-Weber syndrome 1 (ORW1). HHT1 is an autosomal dominant multisystemic vascular dysplasia, characterized by recurrent epistaxis, muco-cutaneous telangiectases, gastro-intestinal hemorrhage, and pulmonary (PAVM), cerebral (CAVM) and hepatic arteriovenous malformations; all secondary manifestations of the underlying vascular dysplasia. Although the first symptom of HHT1 in children is generally nose bleed, there is an important clinical heterogeneity.
Cellular localization	Membrane.

Images



SDS-PAGE - Recombinant human CD105 protein
(ab54338)

SDS-PAGE of recombinant human soluble CD105 fragment. The sample was loaded in 10% SDS-polyacrylamide gel under reducing conditions and stained with Coomassie blue.



Sandwich ELISA - Recombinant human CD105
protein (ab54338)

Standard Curve for CD105 (Analyte: **CD105 protein (ab54338)**);
dilution range 1pg/ml to 1ug/ml using Capture Antibody **Mouse
monoclonal [MEM-226] to CD105 (ab2529)** at 5ug/ml and
Detector Antibody **Rabbit polyclonal to CD105 (ab21224)** at
0.5ug/ml.



Western blot - Recombinant human CD105 protein
(ab54338)

Please note: All products are "FOR RESEARCH USE ONLY. NOT FOR USE IN DIAGNOSTIC PROCEDURES"

Our Abpromise to you: Quality guaranteed and expert technical support

- Replacement or refund for products not performing as stated on the datasheet
- Valid for 12 months from date of delivery
- Response to your inquiry within 24 hours

- We provide support in Chinese, English, French, German, Japanese and Spanish
- Extensive multi-media technical resources to help you
- We investigate all quality concerns to ensure our products perform to the highest standards

If the product does not perform as described on this datasheet, we will offer a refund or replacement. For full details of the Abpromise, please visit <https://www.abcam.com/abpromise> or contact our technical team.

Terms and conditions

- Guarantee only valid for products bought direct from Abcam or one of our authorized distributors