

Product datasheet

Recombinant Human CD151 protein ab152269

1 Image

Description

Product name	Recombinant Human CD151 protein
Expression system	Wheat germ
Protein length	Full length protein
Animal free	No
Nature	Recombinant
Species	Human
Sequence	MGEFNEKKTTCGTVCLKYLLFTYNCCLWLAGLAVMAVGI WTLALKSDYIS LLASGYLATAYILVVAGTVVMVTGVLGCCATFKERNLLR LYFILLII FLLEIIAGILAYAYYQQLNTELKENLKDTMTKRYHQPGHEAV TSAVDQLQ QEFHCCGSNNSQDWRDSEWIRSQEAGGRVVPDSCCKT VVALCGQRDHASN YKVEGGCITKLETFIQEHLRVIGAVGIGIACVQVFGMIFTCCL YRSLKL EHY
Amino acids	1 to 253
Tags	GST tag N-Terminus

Specifications

Our **Abpromise guarantee** covers the use of **ab152269** in the following tested applications.

The application notes include recommended starting dilutions; optimal dilutions/concentrations should be determined by the end user.

Applications	Western blot ELISA
Form	Liquid
Additional notes	

Preparation and Storage

Stability and Storage

Shipped on dry ice. Upon delivery aliquot and store at -80°C. Avoid freeze / thaw cycles.

pH: 8.00

Constituents: 0.31% Glutathione, 0.79% Tris HCl

General Info

Function

Essential for the proper assembly of the glomerular and tubular basement membranes in kidney.

Tissue specificity

Expressed in a variety of tissues including vascular endothelium and epidermis. Expressed on erythroid cells, with a higher level of expression in erythroid precursors than on mature erythrocytes.

Involvement in disease

Defects in CD151 are the cause of nephropathy with pretibial epidermolysis bullosa and deafness (NPEBD) [MIM:609057]. NPEBD is characterized by the association of hereditary nephritis, epidermolysis bullosa, deafness, and beta-thalassemia minor.

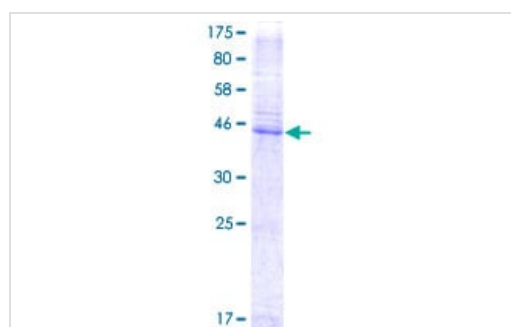
Sequence similarities

Belongs to the tetraspanin (TM4SF) family.

Cellular localization

Membrane.

Images



ab152269 on a 12.5% SDS-PAGE stained with Coomassie Blue.

SDS-PAGE - Recombinant Human CD151 protein
(ab152269)

Please note: All products are "FOR RESEARCH USE ONLY. NOT FOR USE IN DIAGNOSTIC PROCEDURES"

Our Abpromise to you: Quality guaranteed and expert technical support

- Replacement or refund for products not performing as stated on the datasheet
- Valid for 12 months from date of delivery
- Response to your inquiry within 24 hours
- We provide support in Chinese, English, French, German, Japanese and Spanish
- Extensive multi-media technical resources to help you
- We investigate all quality concerns to ensure our products perform to the highest standards

If the product does not perform as described on this datasheet, we will offer a refund or replacement. For full details of the Abpromise, please visit <https://www.abcam.com/abpromise> or contact our technical team.

Terms and conditions

- Guarantee only valid for products bought direct from Abcam or one of our authorized distributors