

Product datasheet

Recombinant Human CD16 (mutated V176F) protein (His tag) ab215655

1 Image

Description

Product name	Recombinant Human CD16 (mutated V176F) protein (His tag)		
Purity	> 95 % SDS-PAGE.		
Endotoxin level	< 1.000 Eu/µg		
Expression system	Mammalian		
Accession	<u>P08637</u>		
Protein length	Protein fragment		
Animal free	No		
Nature	Recombinant		
Species	Human		
Sequence	GMRTEDLPKAVVFLEPQWYRVLEKDSVTLKCQGAYSPE DNSTQWFHNESL ISSQASSYFIDAATVDDSGEYRCQTNLSTLSDPVQLEVHIG WLLLQAPRW VFKEEDPIHLRCHSWKNTALHKVTYLQNGKGRKYFHNS DFYIPKATLKD SGSYFCRGLFGSKNVSSETVNITITQGLAVSTISSFFPPGY QHHHHHH		
Predicted molecular weight	23 kDa including tags		
Amino acids	17 to 208		
Modifications	mutated V176F		
Tags	His tag C-Terminus		
Additional sequence information	Extracellular domain mutated Val176Phe		

Specifications

Our **Abpromise guarantee** covers the use of **ab215655** in the following tested applications.

The application notes include recommended starting dilutions; optimal dilutions/concentrations should be determined by the end user.

Applications	SDS-PAGE
--------------	----------

Form Lyophilized

Preparation and Storage

Stability and Storage Shipped at 4°C. Store at -20°C long term.

pH: 7.40

Constituent: 100% PBS

Lyophilized from a 0.2 µm filtered solution

Reconstitution Always centrifuge tubes before opening. Do not mix by vortex or pipetting. Reconstitute with ddH₂O to a concentration no less than 100 µg/mL. Reconstituted protein solution can be stored at 4-7°C for 2-7 days. Aliquots of reconstituted samples are stable at < -20°C for 3 months.

General Info

Function Receptor for the Fc region of IgG. Binds complexed or aggregated IgG and also monomeric IgG. Mediates antibody-dependent cellular cytotoxicity (ADCC) and other antibody-dependent responses, such as phagocytosis.

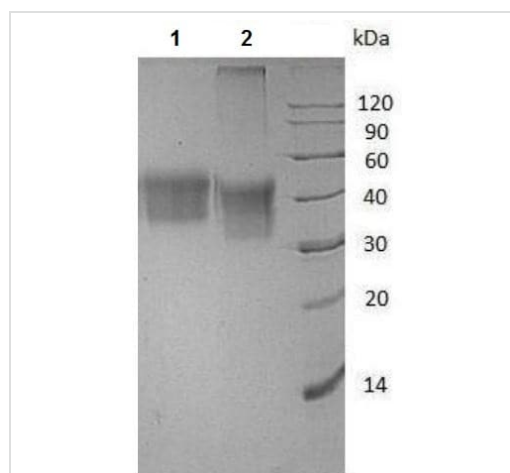
Tissue specificity Expressed on natural killer cells, macrophages, subpopulation of T-cells, immature thymocytes and placental trophoblasts.

Sequence similarities Contains 2 Ig-like C2-type (immunoglobulin-like) domains.

Post-translational modifications Glycosylated. Contains high mannose- and complex-type oligosaccharides. The soluble form is produced by a proteolytic cleavage.

Cellular localization Cell membrane. Secreted. Exists also as a soluble receptor.

Images



SDS-PAGE analysis of ab215655 under reducing (Lane 1) and non-reducing (Lane 2) conditions.

SDS-PAGE - Recombinant Human CD16 (mutated V176F) protein (His tag) (ab215655)

Please note: All products are "FOR RESEARCH USE ONLY. NOT FOR USE IN DIAGNOSTIC PROCEDURES"

Our Abpromise to you: Quality guaranteed and expert technical support

- Replacement or refund for products not performing as stated on the datasheet
- Valid for 12 months from date of delivery
- Response to your inquiry within 24 hours

- We provide support in Chinese, English, French, German, Japanese and Spanish
- Extensive multi-media technical resources to help you
- We investigate all quality concerns to ensure our products perform to the highest standards

If the product does not perform as described on this datasheet, we will offer a refund or replacement. For full details of the Abpromise, please visit <https://www.abcam.com/abpromise> or contact our technical team.

Terms and conditions

- Guarantee only valid for products bought direct from Abcam or one of our authorized distributors