

Recombinant human CD167 α /DDR1 protein ab101591

[5 Images](#)

Description

| | |
|-----------------------------------|--|
| Product name | Recombinant human CD167 α /DDR1 protein |
| Biological activity | The specific activity of CD167 α /DDR1 is determined to be 5 nmol/min/mg |
| Purity | > 90 % SDS-PAGE. The purity was determined to be >90% by densitometry. Affinity purified. |
| Expression system | Baculovirus infected insect cells |
| Accession | <u>Q08345-2</u> |
| Protein length | Protein fragment |
| Animal free | No |
| Nature | Recombinant |
| Species | Human |
| Predicted molecular weight | 77 kDa including tags |
| Amino acids | 444 to 876 |

Specifications

Our **Abpromise guarantee** covers the use of **ab101591** in the following tested applications.

The application notes include recommended starting dilutions; optimal dilutions/concentrations should be determined by the end user.

| | |
|-------------------------|---|
| Applications | Functional Studies Western blot SDS-PAGE |
| Form | Liquid |
| Additional notes | <u>ab204867</u> (IRS1 peptide) can be utilized as a substrate for assessing kinase activity This product was previously labelled as MCK10 |

Preparation and Storage

| | |
|------------------------------|--|
| Stability and Storage | Shipped on dry ice. Upon delivery aliquot and store at -80°C. Avoid freeze / thaw cycles. pH: 7.50 Constituents: 0.307% Glutathione, 0.00174% PMSF, 0.00385% DTT, 0.79% Tris HCl, 0.00292% |
|------------------------------|--|

EDTA, 25% Glycerol (glycerin, glycerine), 0.87% Sodium chloride

This product is an active protein and may elicit a biological response in vivo, handle with caution.

General Info

Function

May be involved in cell-cell interactions and recognition.

Tissue specificity

Detected in T-47D, MDA-MB-175 and HBL-100 breast carcinoma cells, A431 epidermoid carcinoma cells, SW48 and SNU-C2B colon carcinoma cells and Hs 294T melanoma cells (at protein level). Expressed at low levels in most adult tissues and is highest in the brain, lung, placenta and kidney. Lower levels of expression are detected in melanocytes, heart, liver, skeletal muscle and pancreas. Abundant in breast carcinoma cell lines. In the colonic mucosa, expressed in epithelia but not in the connective tissue of the lamina propria. In the thyroid gland, expressed in the epithelium of the thyroid follicles. In pancreas, expressed in the islets of Langerhans cells, but not in the surrounding epithelial cells of the exocrine pancreas. In kidney, expressed in the epithelia of the distal tubules. Not expressed in connective tissue, endothelial cells, adipose tissue, muscle cells or cells of hematopoietic origin.

Sequence similarities

Belongs to the protein kinase superfamily. Tyr protein kinase family. Insulin receptor subfamily. Contains 1 F5/8 type C domain.
Contains 1 protein kinase domain.

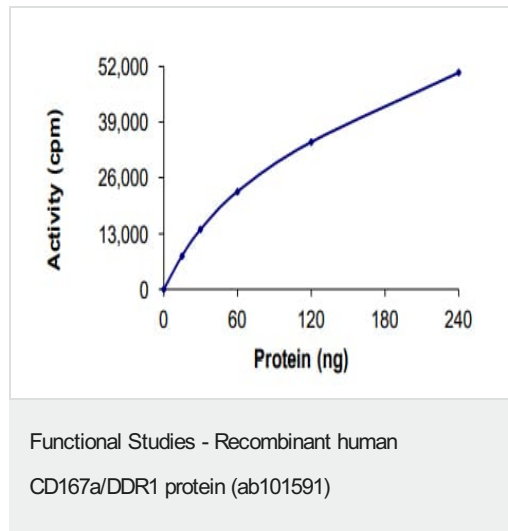
Domain

The Gly/Pro-rich domains may be required for an unusual geometry of interaction with ligand or substrates.

Cellular localization

Secreted and Membrane.

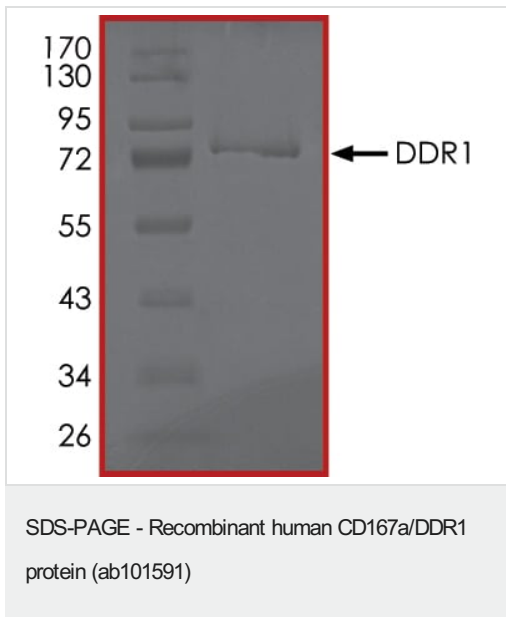
Images



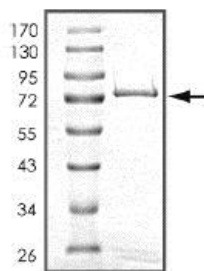
The specific activity of MCK10/NEP (ab101591) was determined to be 6 nmol/min/mg as per activity assay protocol



SDS PAGE analysis of ab101591

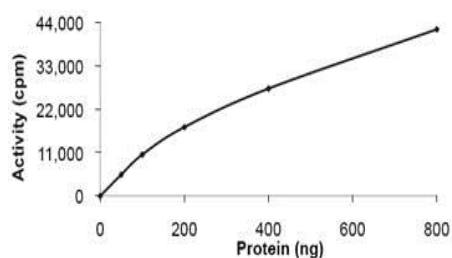


SDS PAGE analysis of ab101591



SDS-PAGE analysis of ab101591

SDS-PAGE - Recombinant human CD167a/DDR1 protein (ab101591)



Specific activity of ab101591

Functional Studies - Recombinant human CD167a/DDR1 protein (ab101591)

Please note: All products are "FOR RESEARCH USE ONLY. NOT FOR USE IN DIAGNOSTIC PROCEDURES"

Our Abpromise to you: Quality guaranteed and expert technical support

- Replacement or refund for products not performing as stated on the datasheet
- Valid for 12 months from date of delivery
- Response to your inquiry within 24 hours
- We provide support in Chinese, English, French, German, Japanese and Spanish
- Extensive multi-media technical resources to help you
- We investigate all quality concerns to ensure our products perform to the highest standards

If the product does not perform as described on this datasheet, we will offer a refund or replacement. For full details of the Abpromise, please visit <https://www.abcam.com/abpromise> or contact our technical team.

Terms and conditions

- Guarantee only valid for products bought direct from Abcam or one of our authorized distributors