

Product datasheet

Recombinant Human CD204 protein (denatured) ab203525

[1 Image](#)

Description

Product name	Recombinant Human CD204 protein (denatured)
Purity	> 85 % SDS-PAGE.
Expression system	Escherichia coli
Accession	<u>P21757</u>
Protein length	Protein fragment
Animal free	No
Nature	Recombinant
Species	Human
Sequence	<pre>MGSSHHHHHSSGLVPRGSHMGSKWETKNCSVSSTNAN DITQSLTGKGND SEEEMRFQEVFMEHMSNMEKRIQHILDMEANLMDTEHFQ NFSMTTDQRFN DILLQLSTLFSSVQGHGNAIDEISKSLISLNTLLDLQLNIENL NGKIQE NTFKQQEEISKLEERVYNVSAEIMAMKEEQVHLEQEIKGE VKVLNNTND LRLKDWEHSQTLRNITLIQGPPGPPGEEKDRGPTGESGPR GFPGPIGPPG LKGDRGAIGFPGSRGLPGYAGRPGNSGPKGQKGEKGS NTLTPFTKVRLV GGSGPHEGRVEILHSGQWGTICDDRWEVRVQVVCRL GYPGVQAVHCAA HFGQGTGPIWLNEVFCFGRESSIEECKIRQWGTRACSHSE DAGVTCTL</pre>
Predicted molecular weight	44 kDa including tags
Amino acids	77 to 451
Tags	His tag N-Terminus
Additional sequence information	Extracellular domain (NP_619729).

Specifications

Our **Abpromise guarantee** covers the use of **ab203525** in the following tested applications.

The application notes include recommended starting dilutions; optimal dilutions/concentrations should be determined by the end user.

Applications	SDS-PAGE
Form	Liquid
Additional notes	This product was previously labelled as Macrophage Scavenger Receptor I

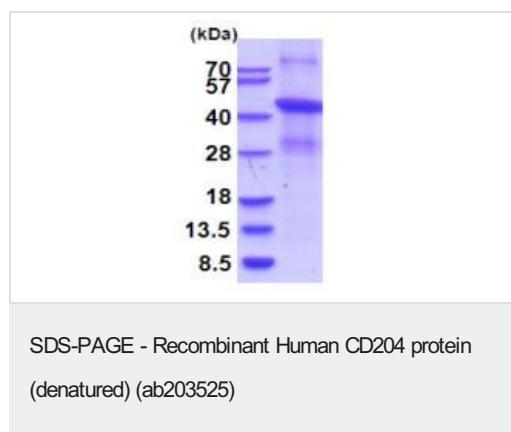
Preparation and Storage

Stability and Storage	Shipped at 4°C. Store at +4°C short term (1-2 weeks). Upon delivery aliquot. Store at -20°C or -80°C. Avoid freeze / thaw cycle. pH: 8.00 Constituents: 0.32% Tris HCl, 10% Glycerol (glycerin, glycerine)
------------------------------	--

General Info

Function	Membrane glycoproteins implicated in the pathologic deposition of cholesterol in arterial walls during atherogenesis. Two types of receptor subunits exist. These receptors mediate the endocytosis of a diverse group of macromolecules, including modified low density lipoproteins (LDL). Isoform III does not internalize acetylated LDL.
Tissue specificity	Isoform I, isoform II and isoform III are expressed in monocyte-derived macrophages.
Sequence similarities	Contains 1 collagen-like domain. Contains 1 SRCR domain.
Cellular localization	Membrane.

Images



15% SDS-PAGE analysis of ab203525 (3 µg).

Please note: All products are "FOR RESEARCH USE ONLY. NOT FOR USE IN DIAGNOSTIC PROCEDURES"

Our Abpromise to you: Quality guaranteed and expert technical support

- Replacement or refund for products not performing as stated on the datasheet
- Valid for 12 months from date of delivery
- Response to your inquiry within 24 hours

- We provide support in Chinese, English, French, German, Japanese and Spanish
- Extensive multi-media technical resources to help you
- We investigate all quality concerns to ensure our products perform to the highest standards

If the product does not perform as described on this datasheet, we will offer a refund or replacement. For full details of the Abpromise, please visit <https://www.abcam.com/abpromise> or contact our technical team.

Terms and conditions

- Guarantee only valid for products bought direct from Abcam or one of our authorized distributors