

Product datasheet

Recombinant human CD272/BTLA protein (Fc Chimera Active) ab219719

[2 Images](#)

Description

Product name	Recombinant human CD272/BTLA protein (Fc Chimera Active)	
Biological activity	Measured by its binding ability in a functional ELISA. Immobilized Human HVEM, His Tag at 5 µg/mL (100 µL/well) can bind ab219719 with a linear range of 0.02-1.25 µg/mL.	
Purity	> 92 % SDS-PAGE.	
Endotoxin level	< 1.000 Eu/µg	
Expression system	HEK 293 cells	
Accession	<u>Q7Z6A9-2</u>	
Protein length	Protein fragment	
Animal free	No	
Nature	Recombinant	
Species	Human	
Sequence	KESCDVQLYIKRQSEHSILA GDPFELECPV KYCANRPHVT WCKLNGTTCV KLEDRQTSWK EEKNISFFIL HFEPVLPNDN GSYRCSANFQ SNLIESHSTT LYVT	
Predicted molecular weight	39 kDa including tags	
Amino acids	31 to 134	
Tags	Fc tag C-Terminus	
Additional sequence information	Fused with a human IgG1 Fc tag at the C terminus (Accession # NP_001078826.1)	

Specifications

Our **Abpromise guarantee** covers the use of **ab219719** in the following tested applications.

The application notes include recommended starting dilutions; optimal dilutions/concentrations should be determined by the end user.

Applications	SDS-PAGE Functional Studies
Form	Lyophilized

Additional notes

This product was previously labelled as CD272

Preparation and Storage

Stability and Storage

Shipped at 4°C. Store at -20°C or -80°C. Avoid freeze / thaw cycle.

pH: 7.4

Constituents: 0.61% Tris buffer, 0.75% Glycine, L-Arginine, Sodium chloride

Lyophilized from 0.22 µm filtered solution.

5-10% trehalose is commonly used for freeze drying, and after reconstitution, the trehalose is mostly about 3-5%

This product is an active protein and may elicit a biological response in vivo, handle with caution.

Reconstitution

Reconstitute with sterile deionized water to a concentration of 400 µg/ml.

General Info

Function

Lymphocyte inhibitory receptor which inhibits lymphocytes during immune response.

Sequence similarities

Contains 1 Ig-like V-type (immunoglobulin-like) domain.

Post-translational modifications

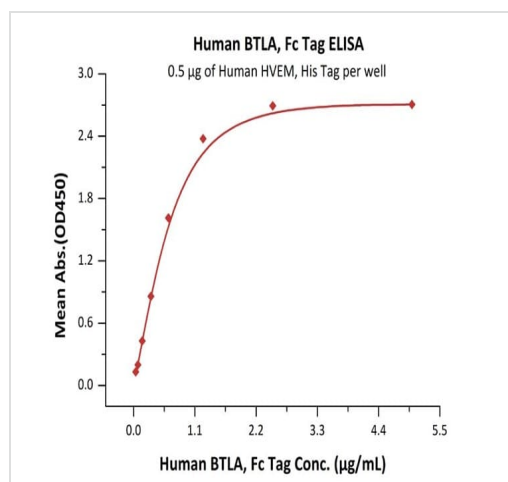
Phosphorylated on Tyr residues by TNFRSF14 and by antigen receptors cross-linking, both inducing association with PTPN6 and PTPN11.

N-glycosylated.

Cellular localization

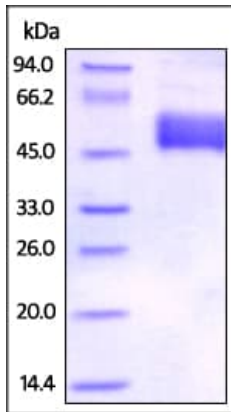
Membrane.

Images



Immobilized Human HVEM, His Tag at 5 µg/mL (100 µL/well) can bind ab219719 with a linear range of 0.02-1.25 µg/mL.

Functional Studies - Recombinant human
CD272/BTLA protein (Fc Chimera Active) (ab219719)



SDS-PAGE analysis of reduced ab219719 stained overnight with Coomassie Blue.

SDS-PAGE - Recombinant human CD272/BTLA protein (Fc Chimera Active) (ab219719)

Please note: All products are "FOR RESEARCH USE ONLY. NOT FOR USE IN DIAGNOSTIC PROCEDURES"

Our Abpromise to you: Quality guaranteed and expert technical support

- Replacement or refund for products not performing as stated on the datasheet
- Valid for 12 months from date of delivery
- Response to your inquiry within 24 hours
- We provide support in Chinese, English, French, German, Japanese and Spanish
- Extensive multi-media technical resources to help you
- We investigate all quality concerns to ensure our products perform to the highest standards

If the product does not perform as described on this datasheet, we will offer a refund or replacement. For full details of the Abpromise, please visit <https://www.abcam.com/abpromise> or contact our technical team.

Terms and conditions

- Guarantee only valid for products bought direct from Abcam or one of our authorized distributors