

## Product datasheet

# Recombinant Human CD3 epsilon protein (Fc Chimera His Tag) ab220590

[2 Images](#)

### Description

<b>Product name</b>	Recombinant Human CD3 epsilon protein (Fc Chimera His Tag)
<b>Biological activity</b>	Immobilized Anti Human CD3 MAb, mouse IgG1 at 2 µg/mL (100 µL/well) can bind ab220590 with a linear range of 0.1-3 ng/mL (Routinely tested).
<b>Purity</b>	> 95 % SDS-PAGE.
<b>Endotoxin level</b>	< 1.000 Eu/µg
<b>Expression system</b>	HEK 293 cells
<b>Accession</b>	<b><u>P07766</u></b>
<b>Protein length</b>	Protein fragment
<b>Animal free</b>	No
<b>Nature</b>	Recombinant
<b>Species</b>	Human
<b>Sequence</b>	DGNEEMGG ITQTPYKVS I SGTTVILTCP QYPGSEILWQ HNDKNIGGDE DDKNIGSDED HLSLKEFSEL EQSGYYVCYP RGSKPEDANF YLYLRARVCE NCMEMD
<b>Predicted molecular weight</b>	39 kDa including tags
<b>Amino acids</b>	23 to 126
<b>Tags</b>	His tag C-Terminus , Fc tag C-Terminus
<b>Additional sequence information</b>	Protein carries a human IgG1 Fc tag at the C-terminus, followed by a polyhistidine tag. (NP_000724.1). The protein migrates as 5415-55 kDa under reducing (R) condition (SDS-PAGE) due to glycosylation.
<b>Description</b>	Recombinant human CD3 epsilon protein (Fc Chimera His Tag)

### Specifications

Our **Abpromise guarantee** covers the use of **ab220590** in the following tested applications.

The application notes include recommended starting dilutions; optimal dilutions/concentrations should be determined by the end user.

**Applications** SDS-PAGE

**Form** Lyophilized

## Preparation and Storage

---

### Stability and Storage

Shipped at 4°C. Store at -80°C. Avoid freeze / thaw cycle.

pH: 7.54

Constituent: 100% PBS

Lyophilized from 0.22 µm filtered solution.

5-10% trehalose is commonly used for freeze drying, and after reconstitution, the trehalose is mostly about 3-5%

This product is an active protein and may elicit a biological response in vivo, handle with caution.

### Reconstitution

Reconstitute with sterile deionized water to a concentration of 400 µg/ml.

## General Info

---

### Function

The CD3 complex mediates signal transduction.

### Sequence similarities

Contains 1 Ig-like (immunoglobulin-like) domain.

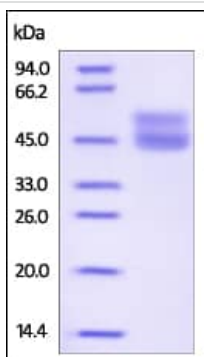
Contains 1 ITAM domain.

### Cellular localization

Membrane.

## Images

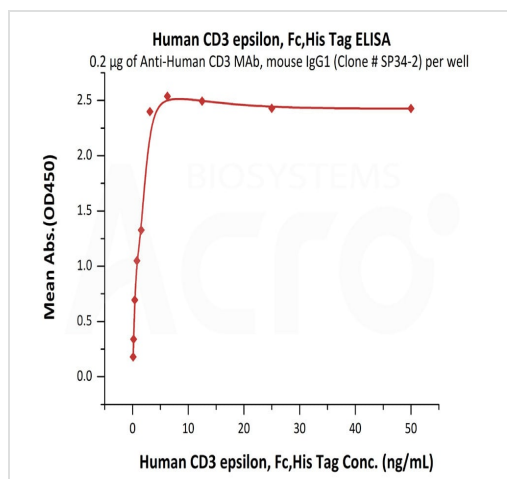
---



SDS-PAGE - Recombinant Human CD3 epsilon protein (Fc Chimera His Tag) (ab220590)

SDS-PAGE analysis of reduced ab220590 stained overnight with Coomassie Blue.

The protein migrates as 44-54 kDa under reducing conditions (SDS-PAGE) due to glycosylation.



Immobilized Anti Human CD3 MAb, mouse IgG1 at 2 µg/mL (100 µL/well) can bind ab220590 with a linear range of 0.1-3 ng/mL (Routinely tested).

Functional Studies - Recombinant human CD3 epsilon protein (Fc Chimera His Tag) (ab220590)

**Please note:** All products are "FOR RESEARCH USE ONLY. NOT FOR USE IN DIAGNOSTIC PROCEDURES"

### Our Abpromise to you: Quality guaranteed and expert technical support

- Replacement or refund for products not performing as stated on the datasheet
- Valid for 12 months from date of delivery
- Response to your inquiry within 24 hours
- We provide support in Chinese, English, French, German, Japanese and Spanish
- Extensive multi-media technical resources to help you
- We investigate all quality concerns to ensure our products perform to the highest standards

If the product does not perform as described on this datasheet, we will offer a refund or replacement. For full details of the Abpromise, please visit <https://www.abcam.com/abpromise> or contact our technical team.

### Terms and conditions

- Guarantee only valid for products bought direct from Abcam or one of our authorized distributors