

## Product datasheet

# Recombinant Human CD38 protein ab114253

1 Image

### Description

---

<b>Product name</b>	Recombinant Human CD38 protein
<b>Expression system</b>	Wheat germ
<b>Accession</b>	<b><u>AAH07964</u></b>
<b>Protein length</b>	Full length protein
<b>Animal free</b>	No
<b>Nature</b>	Recombinant
<b>Species</b>	Human
<b>Sequence</b>	MANCEFSPVSGDKPCCRLSRRRAQLCLGVLSILVLILVVVLA VVVPRWRQQW SGPGTTKRFPETVLARCVKYTEIHPEMRHVDCQSVWDAF KGAFISKHPCN ITEEDYQPLMKLGTQTVPCNKILLWSRIKDLAQFTQVQRD MFTLEDLL GYLADDLTWCGEFNTSKINYQSCPDRKDCSNNPVSVF WKTVSRRFAEAA CDVVHAMLNGSRSKIFDKNSTFGSVEVHNLQPEKVQTLE AWVIHGGREDS RDLCDQPTIKELESIIISKRNIFSCKNYRPDKFLQCCKNPE DSSCTSEI
<b>Predicted molecular weight</b>	59 kDa including tags
<b>Amino acids</b>	1 to 300

### Specifications

---

Our **Abpromise guarantee** covers the use of **ab114253** in the following tested applications.

The application notes include recommended starting dilutions; optimal dilutions/concentrations should be determined by the end user.

<b>Applications</b>	SDS-PAGE Western blot ELISA
<b>Form</b>	Liquid

**Additional notes**

## Preparation and Storage

---

**Stability and Storage** Shipped on dry ice. Upon delivery aliquot and store at -80°C. Avoid freeze / thaw cycles.  
pH: 8.00  
Constituents: 0.3% Glutathione, 0.79% Tris HCl

## General Info

---

**Function** Synthesizes cyclic ADP-ribose, a second messenger for glucose-induced insulin secretion. Also has cADPr hydrolase activity. Also moonlights as a receptor in cells of the immune system.

**Tissue specificity** Expressed at high levels in pancreas, liver, kidney, brain, testis, ovary, placenta, malignant lymphoma and neuroblastoma.

**Sequence similarities** Belongs to the ADP-ribosyl cyclase family.

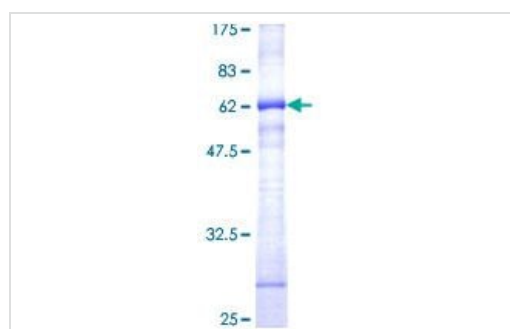
**Developmental stage** Preferentially expressed at both early and late stages of the B and T-cell maturation. It is also detected on erythroid and myeloid progenitors in bone marrow, where the level of surface expression was shown to decrease during differentiation of blast-forming unit E to colony-forming unit E.

**Cellular localization** Membrane.

---

## Images

---



ab114253 analysed by 12.5% SDS-PAGE and stained with Coomassie Blue.

SDS-PAGE - Recombinant Human CD38 protein  
(ab114253)

**Please note:** All products are "FOR RESEARCH USE ONLY. NOT FOR USE IN DIAGNOSTIC PROCEDURES"

## Our Abpromise to you: Quality guaranteed and expert technical support

---

- Replacement or refund for products not performing as stated on the datasheet
- Valid for 12 months from date of delivery
- Response to your inquiry within 24 hours

- We provide support in Chinese, English, French, German, Japanese and Spanish
- Extensive multi-media technical resources to help you
- We investigate all quality concerns to ensure our products perform to the highest standards

If the product does not perform as described on this datasheet, we will offer a refund or replacement. For full details of the Abpromise, please visit <https://www.abcam.com/abpromise> or contact our technical team.

### **Terms and conditions**

---

- Guarantee only valid for products bought direct from Abcam or one of our authorized distributors