

## Product datasheet

# Recombinant Human CD39 protein ab114445

1 Image

### Description

---

**Product name** Recombinant Human CD39 protein

**Expression system** Wheat germ

**Accession** **P49961**

**Protein length** Full length protein

**Animal free** No

**Nature** Recombinant

**Species** Human

**Sequence**

```
MEDTKESNVKTFCSKNILAILGFSSIIAVIALLAVGLTQNKAL
PENVKYG
MLDAGSSHTSLYYKWPAEKENDTGVVHQVEECRVKGP
ISKFVQKVNE
IGYLTDCMERAREVIPRSQHQETPVYLGATAGMRLLRMES
EELADRVL
D
VVERLSNYPDFDQGARITGQEEGAYGWITINYLKFSQK
TRWFSNP
YETNNQETFGALDLGGASTQVTFVPQNQTIESPDNALQFR
LYGKDYNVYT
HSFLCYGKDQALWQKLAQDIQVASNEILRDPCFHPGYKKV
VNVSDLYKTP
CTKRFEMTLPFQQFEIQGIGNYQQCHQSILELFNTSYCPYS
QCAFNGIFL
PPLQGDFGAFSAFYFVMKFLNLTSEKVSQEKVTEMMKKF
CAQPWEEIKTS
YAGVKEKYLSEYCFSGTYLSLLLQGYHFTADSWEHIHFIGKI
QGSDAGW
TLGYMLNLTNMIPAEQPLSTPLSHSTYVFLMVLFSVLVFTV
AIIGLLIFH KPSYFWKDMV
```

**Predicted molecular weight** 82 kDa including tags

**Amino acids** 1 to 510

### Specifications

---

Our **Abpromise guarantee** covers the use of **ab114445** in the following tested applications.

The application notes include recommended starting dilutions; optimal dilutions/concentrations should be determined by the end user.

|                     |                                   |
|---------------------|-----------------------------------|
| <b>Applications</b> | ELISA<br>SDS-PAGE<br>Western blot |
| <b>Form</b>         | Liquid                            |

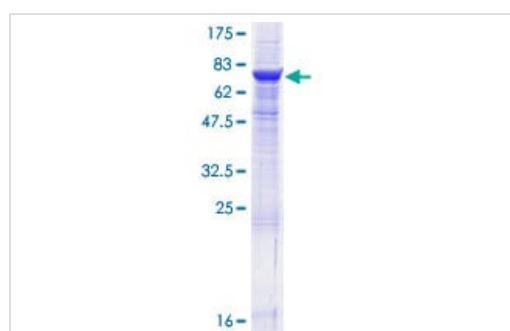
### Preparation and Storage

|                              |   |
|------------------------------|---|
| <b>Stability and Storage</b> | Shipped on dry ice. Upon delivery aliquot and store at -80°C. Avoid freeze / thaw cycles.<br>pH: 8.00<br>Constituents: 0.3% Glutathione, 0.79% Tris HCl |
|------------------------------|---|

### General Info

|   |   |
|---|---|
| <b>Function</b>                         | In the nervous system, could hydrolyze ATP and other nucleotides to regulate purinergic neurotransmission. Could also be implicated in the prevention of platelet aggregation. Hydrolyzes ATP and ADP equally well.                                 |
| <b>Tissue specificity</b>               | Expressed primarily on activated lymphoid cells. Also expressed in endothelial tissues. The vascular isoform and the placental isoform II are present in both placenta and umbilical vein, whereas placental isoform I is present in placenta only. |
| <b>Sequence similarities</b>            | Belongs to the GDA1/CD39 NTPase family.   |
| <b>Post-translational modifications</b> | The N-terminus is blocked.<br>Palmitoylated in the N-terminal part.   |
| <b>Cellular localization</b>            | Membrane.   |

### Images



SDS-PAGE - Recombinant Human CD39 protein  
(ab114445)

ab114445 analysed on a 12.5% SDS-PAGE gel stained with Coomassie Blue.

**Please note:** All products are "FOR RESEARCH USE ONLY. NOT FOR USE IN DIAGNOSTIC PROCEDURES"

**Our Promise to you: Quality guaranteed and expert technical support**

- Replacement or refund for products not performing as stated on the datasheet
- Valid for 12 months from date of delivery
- Response to your inquiry within 24 hours
  
- We provide support in Chinese, English, French, German, Japanese and Spanish
- Extensive multi-media technical resources to help you
- We investigate all quality concerns to ensure our products perform to the highest standards

If the product does not perform as described on this datasheet, we will offer a refund or replacement. For full details of the Abpromise, please visit <https://www.abcam.com/abpromise> or contact our technical team.

### **Terms and conditions**

---

- Guarantee only valid for products bought direct from Abcam or one of our authorized distributors