

Product datasheet

Recombinant human CD58 protein (Fc Chimera Active)
ab221335

2 Images

Description	
Product name	Recombinant human CD58 protein (Fc Chimera Active)
Biological activity	Immobilized Human CD2, His Tag at 2µg/mL (100 µL/well) can bind ab221335 with a linear range of 10-156 ng/mL.
Purity	> 95 % SDS-PAGE.
Endotoxin level	< 1.000 Eu/µg
Expression system	HEK 293 cells
Accession	<u>P19256</u>
Protein length	Protein fragment
Animal free	No
Nature	Recombinant
Species	Human
Sequence	FSQQIYGVVYGNVTFHVPSNVPLKEVLWKKQKDKVAELE NSEFRAFSSFK NRVYLDTVSG SLTYNLTSSDEDEYEMESPNITDTMKFFLYVLESFPS PTLTCALTNGSIEVQCMIPHEY NSHRGLIMYSWDCPMEQCKRNSTSIY FKMENDLPQKIQCTLSNPLFNTTSSIIITTCIPS SGHSRHR
Predicted molecular weight	48 kDa including tags
Amino acids	29 to 215
Additional sequence information	extracellular domain with a Human IgG1 Fc tag at the C-terminus (aa 100-330).

Specifications	
Our <u>Abpromise guarantee</u> covers the use of ab221335 in the following tested applications.	
The application notes include recommended starting dilutions; optimal dilutions/concentrations should be determined by the end user.	
Applications	SDS-PAGE Functional Studies
Form	Lyophilized

Additional notes

No activity loss is observed after storage at:

4-8 °C for 12 months in lyophilized state;

-70 °C for 3 months under sterile conditions after reconstitution.

Previously labelled as LFA3.

Preparation and Storage

Stability and Storage

Shipped at 4°C. Store at -80°C. Avoid freeze / thaw cycle.

pH: 7.4

Constituents: 0.61% Tris, 0.75% Glycine, 5% Trehalose, 0.44% L-Arginine, 0.87% Sodium chloride

Lyophilized from 0.22 µm filtered solution

This product is an active protein and may elicit a biological response in vivo, handle with caution.

Reconstitution

Reconstitute with sterile deionized water to a concentration of 400 µg/ml.

General Info

Function

Ligand of the T-lymphocyte CD2 glycoprotein. This interaction is important in mediating thymocyte interactions with thymic epithelial cells, antigen-independent and -dependent interactions of T-lymphocytes with target cells and antigen-presenting cells and the T-lymphocyte rosetting with erythrocytes. In addition, the LFA-3/CD2 interaction may prime response by both the CD2+ and LFA-3+ cells.

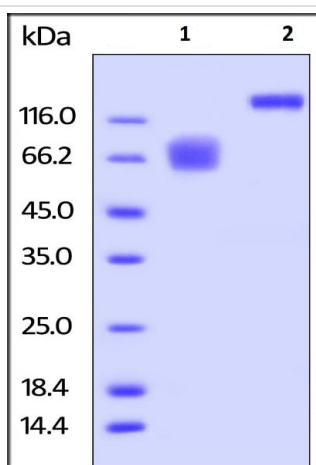
Sequence similarities

Contains 1 Ig-like C2-type (immunoglobulin-like) domain.

Cellular localization

Cell membrane.

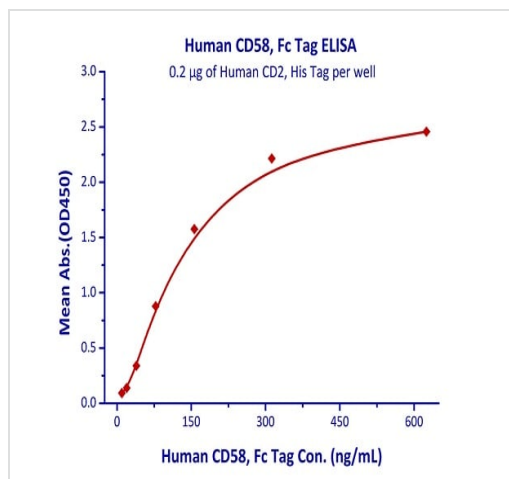
Images



SDS-PAGE - Recombinant human CD58 protein (Fc Chimera Active) (ab221335)

SDS-PAGE analysis of ab221335.

The gel was stained overnight with Coomassie Blue. ab221335 has a calculated MW of 48 kDa. Due to glycosylation, the protein migrates as 60-75 kDa under reducing conditions (Lane 1) and 125-150 kDa under non-reducing conditions (Lane 2).



Immobilized Human CD2, His Tag at 2µg/mL (100 µL/well) binds ab221335 with a linear range of 10-156 ng/mL.

Functional Studies - Recombinant human CD58 protein (Fc Chimera Active) (ab221335)

Please note: All products are "FOR RESEARCH USE ONLY. NOT FOR USE IN DIAGNOSTIC PROCEDURES"

Our Abpromise to you: Quality guaranteed and expert technical support

- Replacement or refund for products not performing as stated on the datasheet
- Valid for 12 months from date of delivery
- Response to your inquiry within 24 hours
- We provide support in Chinese, English, French, German, Japanese and Spanish
- Extensive multi-media technical resources to help you
- We investigate all quality concerns to ensure our products perform to the highest standards

If the product does not perform as described on this datasheet, we will offer a refund or replacement. For full details of the Abpromise, please visit <https://www.abcam.com/abpromise> or contact our technical team.

Terms and conditions

- Guarantee only valid for products bought direct from Abcam or one of our authorized distributors