

Recombinant Human CD97 protein ab131865

1 Image

Description

Product name	Recombinant Human CD97 protein
Expression system	Wheat germ
Accession	<u>P48960-2</u>
Protein length	Full length protein
Animal free	No
Nature	Recombinant
Species	Human
Sequence	

MGGRVFLAFCVWLTPGAETQDSRGCARWCPQNSSCV  
NATACRCNPGFSS  
FSEIITPTETCDDINECATPSKVSCGKFSDCWNTEGSYD  
CVCSPGYEPV  
SGAKTFKNESENTCQDVDECSSGRHQCDSSSTVCFNTVG  
SYSCRCRPGWKP  
RHGIPNNQKDTVCEDMTFSTWTPPPGVHSQTLRFFDKV  
QDLGRDSKTSS  
AEVTIQNVIKLVDELMEAPGDVEALAPPVRHLIATQLLSNL  
EDIMRILAK  
SLPKGPFTYISPSNTELTLMIQERGDKNVTMGQSSARMKL  
NWAVAAGAED  
PGPAVAGILSIQNMTLLANASLNLHSKKQAELEEIYESSIR  
GVQLRRLS  
AVNSIFLSHNNTKELNSPILFAFSHLESSDGEAGRDP  
PAKDVMPGPRQEL  
LCAFWKSDSDRGGHWATEGCQVLGSKNGSTTCQC  
SHLSSFAILMAHYDVE  
DWKLTITRVGLALSLFCLLLCILTFLVRPIQGSRT  
TIHLHLICLFGV  
STIFLAGIENEGGQVGLRCRLVAGLLHYCF  
LA AFCWMSLEGLELYFLVVR  
VFQGGQLSTRWLCLIGYGVPLLIVGVSA  
AIYSKGYGRPRYCWLD FEQGFL  
WSFLGPVTFIILCNAVIFVTTVWKL  
TQKFSEINPDMKKLKKARALTITAI  
AQLFLLGCTWVFGLFIFDDRSLVLT  
YFTILNCLQGAFLYLLHCLLNKKV

<b>Predicted molecular weight</b>	107 kDa including tags
<b>Amino acids</b>	1 to 742

## Specifications

Our **Abpromise guarantee** covers the use of **ab131865** in the following tested applications.

The application notes include recommended starting dilutions; optimal dilutions/concentrations should be determined by the end user.

<b>Applications</b>	ELISA
	Western blot
	SDS-PAGE

<b>Form</b>	Liquid
-------------	--------

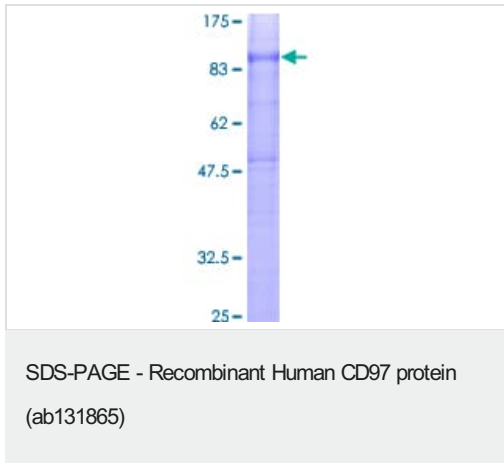
## Preparation and Storage

<b>Stability and Storage</b>	Shipped on dry ice. Upon delivery aliquot and store at -80°C. Avoid freeze / thaw cycles. pH: 8.00 Constituents: 0.31% Glutathione, 0.79% Tris HCl
------------------------------	--

## General Info

<b>Function</b>	Receptor potentially involved in both adhesion and signaling processes early after leukocyte activation. Plays an essential role in leukocyte migration.
<b>Tissue specificity</b>	Broadly expressed, found on most hematopoietic cells, including activated lymphocytes, monocytes, macrophages, dendritic cells, and granulocytes. Expressed also abundantly by smooth muscle cells. Expressed in thyroid, colorectal, gastric, esophageal and pancreatic carcinomas too. Expression are increased under inflammatory conditions in the CNS of multiple sclerosis and in synovial tissue of patients with rheumatoid arthritis. Increased expression of CD97 in the synovium is accompanied by detectable levels of soluble CD97 in the synovial fluid.
<b>Sequence similarities</b>	Belongs to the G-protein coupled receptor 2 family. LN-TM7 subfamily. Contains 5 EGF-like domains. Contains 1 GPS domain.
<b>Domain</b>	The first two EGF domains mediate the interaction with DAF. A third tandemly arranged EGF domain is necessary for the structural integrity of the binding region. Binding to chondroitin sulfate is mediated by the fourth EGF domain.
<b>Post-translational modifications</b>	Proteolytically cleaved into 2 subunits, an extracellular alpha subunit and a seven-transmembrane subunit.
<b>Cellular localization</b>	Cell membrane and Secreted > extracellular space.

## Images



12.5% SDS-PAGE analysis of ab131865 stained with Coomassie Blue.

**Please note:** All products are "FOR RESEARCH USE ONLY. NOT FOR USE IN DIAGNOSTIC PROCEDURES"

### Our Abpromise to you: Quality guaranteed and expert technical support

---

- Replacement or refund for products not performing as stated on the datasheet
- Valid for 12 months from date of delivery
- Response to your inquiry within 24 hours
- We provide support in Chinese, English, French, German, Japanese and Spanish
- Extensive multi-media technical resources to help you
- We investigate all quality concerns to ensure our products perform to the highest standards

If the product does not perform as described on this datasheet, we will offer a refund or replacement. For full details of the Abpromise, please visit <https://www.abcam.com/abpromise> or contact our technical team.

### Terms and conditions

---

- Guarantee only valid for products bought direct from Abcam or one of our authorized distributors