

Product datasheet

Recombinant Human Cdc20 protein ab131769

1 Image

Description

Product name Recombinant Human Cdc20 protein

Expression system Wheat germ

Accession [Q12834](#)

Protein length Full length protein

Animal free No

Nature Recombinant

Species Human

Sequence MAQFAFESDLHSLQLDAPIPNAPPARWQRKAKEAAGPA
PSPMRAANRSH
SAGRTPGRTPGKSSSKVQTTPSKPGGDRYIPHRSAQME
VASFLLSKENQ
PENSQTPTKKEHQAWVLNLNGFDVEEAKILRLSGKPQN
APEGYQNRLLK
LYSQKATPGSSRKTCRYPSLPDRILDAPEIRNDYYLNLVD
WSSGNVLAV
ALDNSVYLWSASSGDILQLLQMEQPGEYISSVAWIKEGNY
LAVGTSSAEV
QLWDVQQQKRLRNMTSHSARVGSLSWNSYLSSGSRSG
HIHHHDVRAEH
HVATLSGHSQEVCGLRWAPDGRHLASGGNDNLVNVWPS
APGEGGWVPLQT
FTQHQGAVKAWAWCPWQSNVLTGGGTSDRHIRWNV
SGACLSAVDAHS
QVCSILWSPHYKELISGHGFAQNQLVIWKYPTMAKVAELK
GHTSRVLSLT
MSPDGATVASAAADETLRLWRCFELDPARRREREKASA
AKSSLIHQGIR

Predicted molecular weight 81 kDa including tags

Amino acids 1 to 499

Specifications

Our **Abpromise guarantee** covers the use of **ab131769** in the following tested applications.

The application notes include recommended starting dilutions; optimal dilutions/concentrations should be determined by the end user.

Applications	SDS-PAGE Western blot ELISA
Form	Liquid
Additional notes	

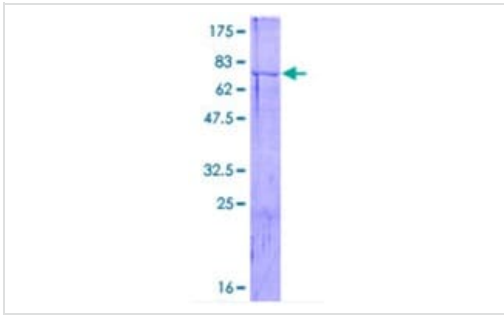
Preparation and Storage

Stability and Storage	Shipped on dry ice. Upon delivery aliquot and store at -80°C. Avoid freeze / thaw cycles. pH: 8.00 Constituents: 0.31% Glutathione, 0.79% Tris HCl
------------------------------	--

General Info

Function	Required for full ubiquitin ligase activity of the anaphase promoting complex/cyclosome (APC/C) and may confer substrate specificity upon the complex. Is regulated by MAD2L1. In metaphase the MAD2L1-CDC20-APC/C ternary complex is inactive and in anaphase the CDC20-APC/C binary complex is active in degrading substrates.
Pathway	Protein modification; protein ubiquitination.
Sequence similarities	Belongs to the WD repeat CDC20/Fizzy family. Contains 7 WD repeats.
Developmental stage	Synthesis is initiated at G1/S, protein level peaks in M phase and protein is abruptly degraded at M/G1 transition.
Post-translational modifications	Phosphorylated during mitosis, probably by maturation promoting factor (MPF). Phosphorylated by BUB1 at Ser-41; Ser-72; Ser-92; Ser-153; Thr-157 and Ser-161. Ubiquitinated and degraded by the proteasome during spindle assembly checkpoint. Deubiquitinated by USP44, leading to stabilize the MAD2L1-CDC20-APC/C ternary complex, thereby preventing premature activation of the APC/C.

Images



12.5% SDS-PAGE analysis of ab131769 stained with Coomassie Blue.

SDS-PAGE - Recombinant Human Cdc20 protein
(ab131769)

Please note: All products are "FOR RESEARCH USE ONLY. NOT FOR USE IN DIAGNOSTIC PROCEDURES"

Our Abpromise to you: Quality guaranteed and expert technical support

- Replacement or refund for products not performing as stated on the datasheet
- Valid for 12 months from date of delivery
- Response to your inquiry within 24 hours
- We provide support in Chinese, English, French, German, Japanese and Spanish
- Extensive multi-media technical resources to help you
- We investigate all quality concerns to ensure our products perform to the highest standards

If the product does not perform as described on this datasheet, we will offer a refund or replacement. For full details of the Abpromise, please visit <https://www.abcam.com/abpromise> or contact our technical team.

Terms and conditions

- Guarantee only valid for products bought direct from Abcam or one of our authorized distributors