

Recombinant Human Cdc37 protein ab101118

1 Image

Description	
Product name	Recombinant Human Cdc37 protein
Purity	> 95 % SDS-PAGE. Purity as determined by densitometric image analysis
Expression system	Escherichia coli
Accession	<u>Q16543</u>
Protein length	Full length protein
Animal free	No
Nature	Recombinant
Species	Human
Sequence	MKHHHHHH ASMVDYSVWDHIEVSDDDETHPNIDTASLF RWRHQARVERM EQFQKEKEELDRGCRECKRKVAECQRKLKELEVAEGGK AELERLQAEAQQ LRKEERSWEQKLEEMRKKEKSMPWNVDTLSDGFSKS MVNTKPEKTEEDS EEVREQKHKTFVEKYEKQIKHFGMLRRWDDSQKYLSDNV HLVCEETANYL VWCIDLEVEEKCALMEQVAHQITVMQFILELAKSLKVDPR ACFRQFFTK IKTADRQYMEGFNDELEAFKERVGRAKLRIEKAMKEYEE EERKKRLGPG GLDPVEVYESLPEELQKCFDVKDVMQMLQDAISKMDPTDA KYHMQRCIDSG LWVPNSKASEAKEGEEAGPGDPLLEAVPKTGDEKDVSV
Predicted molecular weight	46 kDa including tags
Amino acids	1 to 378
Tags	His tag N-Terminus

Specifications

Our **Abpromise guarantee** covers the use of **ab101118** in the following tested applications.

The application notes include recommended starting dilutions; optimal dilutions/concentrations should be determined by the end user.

Applications	SDS-PAGE Western blot
Form	Lyophilized
Additional notes	Store lyophilized protein at -20°C . Lyophilized protein is unstable at 4°C and at RT. Lyophilized protein remains stable until the expiry date when stored at -20°C . Reconstituted protein can be stored at 4°C for a limited period of time unlike the lyophilized protein; it does not show any change after one week at 4°C . If not stored at -20°C the protein must be reconstituted to remain stable.

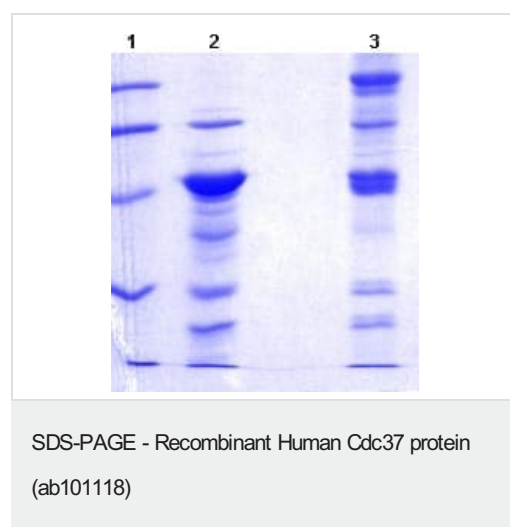
Preparation and Storage

Stability and Storage	Shipped at 4°C . Upon delivery aliquot. Store at -80°C . Avoid freeze / thaw cycle. Please see notes section. Constituents: 0.242% Tris, 0.29% Sodium chloride
Reconstitution	Add deionized water to prepare a working stock solution of approximately 0.5 mg/ml and let the lyophilized pellet dissolve completely. Product is not sterile! Please filter the product by an appropriate sterile filter before using it in the cell culture.

General Info

Function	Co-chaperone that binds to numerous kinases and promotes their interaction with the Hsp90 complex, resulting in stabilization and promotion of their activity.
Sequence similarities	Belongs to the CDC37 family.
Post-translational modifications	Constitutively sumoylated by UBE2I.
Cellular localization	Cytoplasm.

Images



14% SDS-PAGE analysis of ab101118

Lane 1: Molecular weight markers 14, 21, 31, 45, 66, 97 kDa

Lane 2: ab101118 (reduced and heated, 5µg/lane)

Lane 3: ab101118 (non-reduced and non-heated, 5µg/lane)

Please note: All products are "FOR RESEARCH USE ONLY. NOT FOR USE IN DIAGNOSTIC PROCEDURES"

Our Abpromise to you: Quality guaranteed and expert technical support

- Replacement or refund for products not performing as stated on the datasheet
- Valid for 12 months from date of delivery
- Response to your inquiry within 24 hours

- We provide support in Chinese, English, French, German, Japanese and Spanish
- Extensive multi-media technical resources to help you
- We investigate all quality concerns to ensure our products perform to the highest standards

If the product does not perform as described on this datasheet, we will offer a refund or replacement. For full details of the Abpromise, please visit <https://www.abcam.com/abpromise> or contact our technical team.

Terms and conditions

- Guarantee only valid for products bought direct from Abcam or one of our authorized distributors