

Product datasheet

Recombinant Human Cdk8 protein (Tagged) ab268399

1 Image

Description

Product name	Recombinant Human Cdk8 protein (Tagged)
Purity	> 80 % SDS-PAGE. Affinity purified.
Expression system	Baculovirus infected Sf9 cells
Accession	<u>P49336</u>
Protein length	Full length protein
Animal free	No
Nature	Recombinant
Species	Human
Molecular weight information	SDS-PAGE molecular weight: ~84kDa
Tags	GST tag N-Terminus
Additional sequence information	GenBank: BC069634

Specifications

Our **Abpromise guarantee** covers the use of **ab268399** in the following tested applications.

The application notes include recommended starting dilutions; optimal dilutions/concentrations should be determined by the end user.

Applications SDS-PAGE

Form Liquid

Preparation and Storage

Stability and Storage Shipped on Dry Ice. Upon delivery aliquot. Store at -80°C. Avoid freeze / thaw cycle.
pH: 7.50
Constituents: 0.79% Tris HCl, 0.87% Sodium chloride, 0.004% DTT, 0.003% EDTA, 0.002% PMSF, 25% Glycerol (glycerin, glycerine)

General Info

Function Component of the Mediator complex, a coactivator involved in regulated gene transcription of

nearly all RNA polymerase II-dependent genes. Mediator functions as a bridge to convey information from gene-specific regulatory proteins to the basal RNA polymerase II transcription machinery. Mediator is recruited to promoters by direct interactions with regulatory proteins and serves as a scaffold for the assembly of a functional preinitiation complex with RNA polymerase II and the general transcription factors. Phosphorylates the CTD (C-terminal domain) of the large subunit of RNA polymerase II (RNAP II), which may inhibit the formation of a transcription initiation complex. Phosphorylates CCNH leading to down-regulation of the TFIID complex and transcriptional repression. Recruited through interaction with MAML1 to hyperphosphorylate the intracellular domain of NOTCH, leading to its degradation.

Sequence similarities

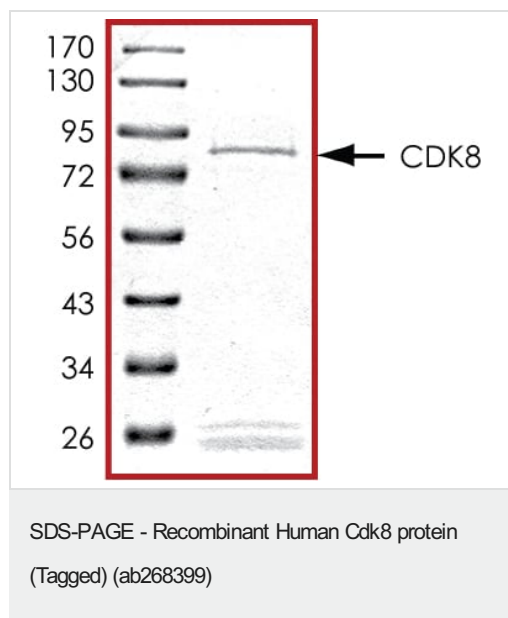
Belongs to the protein kinase superfamily. CMGC Ser/Thr protein kinase family. CDC2/CDKX subfamily.

Contains 1 protein kinase domain.

Cellular localization

Nucleus.

Images



SDS-PAGE analysis of ab268399.

Please note: All products are "FOR RESEARCH USE ONLY. NOT FOR USE IN DIAGNOSTIC PROCEDURES"

Our Abpromise to you: Quality guaranteed and expert technical support

- Replacement or refund for products not performing as stated on the datasheet
- Valid for 12 months from date of delivery
- Response to your inquiry within 24 hours
- We provide support in Chinese, English, French, German, Japanese and Spanish
- Extensive multi-media technical resources to help you
- We investigate all quality concerns to ensure our products perform to the highest standards

If the product does not perform as described on this datasheet, we will offer a refund or replacement. For full details of the Abpromise, please visit <https://www.abcam.com/abpromise> or contact our technical team.

Terms and conditions

- Guarantee only valid for products bought direct from Abcam or one of our authorized distributors