

Product datasheet

Recombinant Human CEE protein (His tag) (denatured) ab177608

[1 Image](#)

Description

Product name	Recombinant Human CEE protein (His tag) (denatured)
Purity	> 90 % SDS-PAGE. ab177608 was purified using anion-exchange chromatography (DEAE sepharose resin) and gel-filtration chromatography.
Expression system	Escherichia coli
Accession	<u>Q7L5D6</u>
Protein length	Full length protein
Animal free	No
Nature	Recombinant
Species	Human
Sequence	MGSSHHHHHSSGLVPRGSHMGSMAAAAAMAEQESAR NGGRNRGGVQRVE GKLRAVVEKGDYEAHQMYRTLFFRYMSQSKHTEARELM YSGALLFFSHG QQNSAADLSMLVLESLEKAEVEVADELLENLAKVFSLMD PNSPERVTFVS RALKWSSGGSGKLGHPRLHQLLALTLWKEQNYCESRYHF LHSADGEGCAN MLVEYSTSRGFRSEVDMFVAQAVLQFLCLKNKSSASVVF TTYTQKHPSIE DGPPFVEPLLNFIWFLLLAVDGGKLTVFTVLCEQYQPSLR RDPMYNEYLD RIGQLFFGVPPKQTSSYGLLGNLLTSLMGSSSEQEDGEES PSDGSPIELD
Predicted molecular weight	39 kDa including tags
Amino acids	1 to 327
Tags	His tag N-Terminus
Description	Recombinant Human CEE protein (His tag)

Specifications

Our **Abpromise guarantee** covers the use of **ab177608** in the following tested applications.

The application notes include recommended starting dilutions; optimal dilutions/concentrations should be determined by the end user.

Applications SDS-PAGE

Form Liquid

Preparation and Storage

Stability and Storage Shipped at 4°C. Store at +4°C short term (1-2 weeks). Upon delivery aliquot. Store at -20°C or -80°C. Avoid freeze / thaw cycle.

pH: 8.00

Constituents: 0.32% Tris HCl, 10% Glycerol (glycerin, glycerine), 2.4% Urea

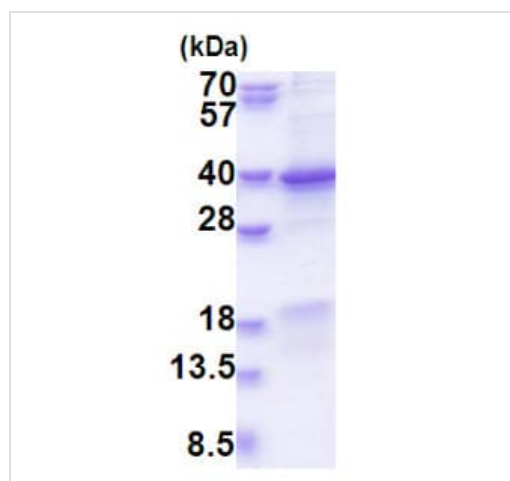
General Info

Function Component of the BAT3 complex, a multiprotein complex involved in the post-translational delivery of tail-anchored (TA) membrane proteins to the endoplasmic reticulum membrane. TA membrane proteins, also named type II transmembrane proteins, contain a single C-terminal transmembrane region. The complex acts by facilitating TA proteins capture by ASNA1/TRC40: it is recruited to ribosomes synthesizing membrane proteins, interacts with the transmembrane region of newly released TA proteins, and transfers them to ASNA1/TRC40 for targeting.

Sequence similarities Belongs to the GET4 family.

Cellular localization Cytoplasm > cytosol.

Images



15% SDS-PAGE analysis of ab177608 (3 µg).

SDS-PAGE - Recombinant Human CEE protein (His tag) (denatured) (ab177608)

Please note: All products are "FOR RESEARCH USE ONLY. NOT FOR USE IN DIAGNOSTIC PROCEDURES"

Our Abpromise to you: Quality guaranteed and expert technical support

- Replacement or refund for products not performing as stated on the datasheet
- Valid for 12 months from date of delivery
- Response to your inquiry within 24 hours

- We provide support in Chinese, English, French, German, Japanese and Spanish
- Extensive multi-media technical resources to help you
- We investigate all quality concerns to ensure our products perform to the highest standards

If the product does not perform as described on this datasheet, we will offer a refund or replacement. For full details of the Abpromise, please visit <https://www.abcam.com/abpromise> or contact our technical team.

Terms and conditions

- Guarantee only valid for products bought direct from Abcam or one of our authorized distributors