

Product datasheet

Recombinant Human CENPP protein (denatured) ab174396

[1 Image](#)

Description

Product name	Recombinant Human CENPP protein (denatured)
Purity	> 85 % SDS-PAGE.
Expression system	Escherichia coli
Accession	<u>Q6IPU0</u>
Protein length	Full length protein
Animal free	No
Nature	Recombinant
Species	Human
Sequence	MGSSHHHHHH SSGLVPRGSH MDAELAEVRA LQAEIAALRR ACEDPPAPWE EKSRVQKSFQ AIHQFNLEGW KSSKDLKNQL GHLESELSFL STLTGINIRN HSKQTEDLTS TEMTEKSIRK VLQRHRLSGN CHMVTFQLEF QILEIQNKER LSSAVTDLNI IMEPTECSEL SEFVSRAEER KDLFMFFRSL HFFVEWFEYR KRTFKHLKEK YPDAVYLSEG PSSCSMGIRS ASRPGFELVI VWRIQIDEDG KVFPKLDLLT KVPQRALELD KNRAIETAPL SFRTLVGLLG IEAALESNIK SLCAEENN
Predicted molecular weight	35 kDa including tags
Amino acids	1 to 288
Tags	His tag N-Terminus
Additional sequence information	NCBI Accession No. NP_001012267.
Description	Recombinant Human CENPP protein

Specifications

Our **Abpromise guarantee** covers the use of **ab174396** in the following tested applications.

The application notes include recommended starting dilutions; optimal dilutions/concentrations should be determined by the end user.

Applications SDS-PAGE

Form Liquid

Preparation and Storage

Stability and Storage

Shipped at 4°C. Store at +4°C short term (1-2 weeks). Upon delivery aliquot. Store at -20°C or -80°C. Avoid freeze / thaw cycle.

pH: 8.00

Constituents: 0.32% Tris HCl, 10% Glycerol (glycerin, glycerine), 2.4% Urea

General Info

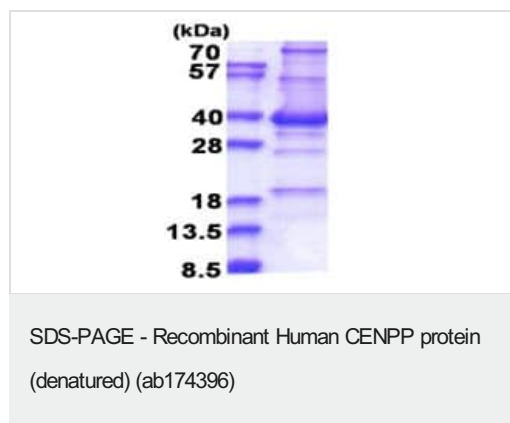
Function

Component of the CENPA-CAD (nucleosome distal) complex, a complex recruited to centromeres which is involved in assembly of kinetochore proteins, mitotic progression and chromosome segregation. May be involved in incorporation of newly synthesized CENPA into centromeres via its interaction with the CENPA-NAC complex.

Cellular localization

Nucleus. Chromosome > centromere. Localizes exclusively in the centromeres. The CENPA-CAD complex is probably recruited on centromeres by the CENPA-NAC complex.

Images



15% SDS-PAGE analysis of ab174396 (3µg).

Please note: All products are "FOR RESEARCH USE ONLY. NOT FOR USE IN DIAGNOSTIC PROCEDURES"

Our Abpromise to you: Quality guaranteed and expert technical support

- Replacement or refund for products not performing as stated on the datasheet
- Valid for 12 months from date of delivery
- Response to your inquiry within 24 hours
- We provide support in Chinese, English, French, German, Japanese and Spanish
- Extensive multi-media technical resources to help you
- We investigate all quality concerns to ensure our products perform to the highest standards

If the product does not perform as described on this datasheet, we will offer a refund or replacement. For full details of the Abpromise, please visit <https://www.abcam.com/abpromise> or contact our technical team.

Terms and conditions

- Guarantee only valid for products bought direct from Abcam or one of our authorized distributors