

## Product datasheet

# Recombinant Human Ceramide glucosyltransferase protein ab152785

[1 Image](#)

### Description

<b>Product name</b>	Recombinant Human Ceramide glucosyltransferase protein	
<b>Expression system</b>	Wheat germ	
<b>Accession</b>	<b><u>Q16739</u></b>	
<b>Protein length</b>	Protein fragment	
<b>Animal free</b>	No	
<b>Nature</b>	Recombinant	
<b>Species</b>	Human	
<b>Sequence</b>	TRLHLNKKATDKQPYSKLPGVSLKPLKGVDPNLINNLET FELDYPKYE VLLCVQDHDDPAIDVCKKLLGKYPNVDARLFIGGKKVGIN PKINNLMGP	
<b>Predicted molecular weight</b>	37 kDa including tags	
<b>Amino acids</b>	33 to 131	

### Specifications

Our **Abpromise guarantee** covers the use of **ab152785** in the following tested applications.

The application notes include recommended starting dilutions; optimal dilutions/concentrations should be determined by the end user.

<b>Applications</b>	ELISA
	Western blot
	SDS-PAGE
<b>Form</b>	Liquid
<b>Additional notes</b>	Protein concentration is above or equal to 0.05 mg/μl.

### Preparation and Storage

<b>Stability and Storage</b>	Shipped on dry ice. Upon delivery aliquot and store at -80°C. Avoid freeze / thaw cycles.
	pH: 8.00
	Constituents: 0.31% Glutathione, 0.79% Tris HCl

## General Info

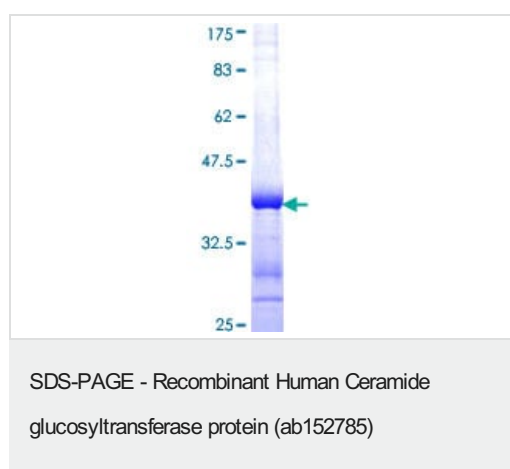
---

<b>Function</b>	Catalyzes the first glycosylation step in glycosphingolipid biosynthesis, the transfer of glucose to ceramide. May also serve as a "flippase".
<b>Tissue specificity</b>	Found in all tissues examined.
<b>Pathway</b>	Lipid metabolism; sphingolipid metabolism.
<b>Sequence similarities</b>	Belongs to the glycosyltransferase 2 family.
<b>Cellular localization</b>	Golgi apparatus membrane.

---

## Images

---



12.5% SDS-PAGE showing ab152785 stained with Coomassie Blue.

**Please note:** All products are "FOR RESEARCH USE ONLY. NOT FOR USE IN DIAGNOSTIC PROCEDURES"

## Our Abpromise to you: Quality guaranteed and expert technical support

---

- Replacement or refund for products not performing as stated on the datasheet
- Valid for 12 months from date of delivery
- Response to your inquiry within 24 hours
- We provide support in Chinese, English, French, German, Japanese and Spanish
- Extensive multi-media technical resources to help you
- We investigate all quality concerns to ensure our products perform to the highest standards

If the product does not perform as described on this datasheet, we will offer a refund or replacement. For full details of the Abpromise, please visit <https://www.abcam.com/abpromise> or contact our technical team.

## Terms and conditions

---

- Guarantee only valid for products bought direct from Abcam or one of our authorized distributors