

## Product datasheet

# Recombinant Human Ceramide synthase 1/LAG1 protein ab161119

[1 Image](#)

### Description

---

<b>Product name</b>	Recombinant Human Ceramide synthase 1/LAG1 protein	
<b>Expression system</b>	Wheat germ	
<b>Protein length</b>	Protein fragment	
<b>Animal free</b>	No	
<b>Nature</b>	Recombinant	
<b>Species</b>	Human	
<b>Sequence</b>	YVAFAAKVLGTGQVHELKDLREYDTAEAQSLKPSKA EKPL RNLVKDKRF	
<b>Amino acids</b>	301 to 350	
<b>Tags</b>	GST tag N-Terminus	

### Specifications

---

Our **[Abpromise guarantee](#)** covers the use of **ab161119** in the following tested applications.

The application notes include recommended starting dilutions; optimal dilutions/concentrations should be determined by the end user.

<b>Applications</b>	ELISA Western blot
<b>Form</b>	Liquid
<b>Additional notes</b>	This product was previously labelled as Ceramide synthase 1.

### Preparation and Storage

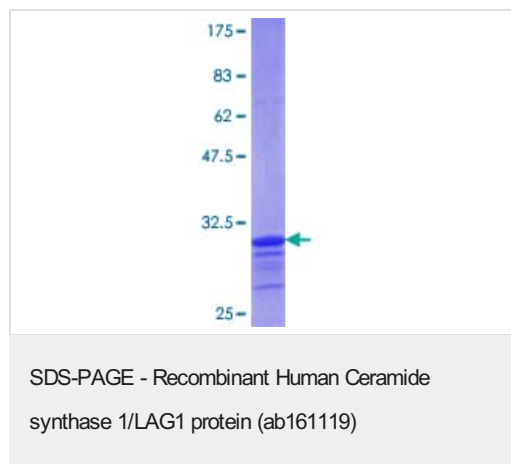
---

<b>Stability and Storage</b>	Shipped on dry ice. Upon delivery aliquot and store at -80°C. Avoid freeze / thaw cycles. pH: 8.00 Constituents: 0.31% Glutathione, 0.79% Tris HCl
------------------------------	--

### General Info

<b>Function</b>	May be either a bona fide (dihydro)ceramide synthase or a modulator of its activity. When overexpressed in cells is involved in the production of sphingolipids containing mainly one fatty acid donor (N-linked stearyl- (C18) ceramide) in a fumonisin B1-independent manner.
<b>Sequence similarities</b>	Contains 1 TLC (TRAM/LAG1/CLN8) domain.
<b>Cellular localization</b>	Endoplasmic reticulum membrane and Endoplasmic reticulum membrane. Golgi apparatus membrane. Isoform 1 may recycle from the Golgi to the endoplasmic reticulum.

## Images



ab161119 on a 12.5% SDS-PAGE stained with Coomassie Blue.

**Please note:** All products are "FOR RESEARCH USE ONLY. NOT FOR USE IN DIAGNOSTIC PROCEDURES"

## Our Abpromise to you: Quality guaranteed and expert technical support

- Replacement or refund for products not performing as stated on the datasheet
- Valid for 12 months from date of delivery
- Response to your inquiry within 24 hours
- We provide support in Chinese, English, French, German, Japanese and Spanish
- Extensive multi-media technical resources to help you
- We investigate all quality concerns to ensure our products perform to the highest standards

If the product does not perform as described on this datasheet, we will offer a refund or replacement. For full details of the Abpromise, please visit <https://www.abcam.com/abpromise> or contact our technical team.

## Terms and conditions

- Guarantee only valid for products bought direct from Abcam or one of our authorized distributors