

Recombinant Human cIAP1 protein ab114410

1 Image

Description

Product name	Recombinant Human cIAP1 protein
Expression system	Wheat germ
Accession	<u>Q13490</u>
Protein length	Full length protein
Animal free	No
Nature	Recombinant
Species	Human
Sequence	

MHKTASQRLFPGPSYQNIKSIMEDSTILSDWTNSNKQKMK  
YDFSCELYRM  
STYSTFPAGVPVSERSLARAGFYTG VNDKVKCFCCGLM  
LDNWKLGDSPI  
QKHKQLYPSCSFIQNLVSASLGSTSKNTSPMRNSFAHSLS  
PTLEHSSLFS  
GSYSSLSPNPLNSRAVEDISSRTNPYSYAMSTEEARFLT  
YHMWPLTFLS  
PSELARAGFYIGPDRVACFACGGKLSNWEPKDDAMS  
EHRRHFPNCPFL  
ENSLETLRFSISNLSMQTHAARMRTFMYPSSVPVQPEQ  
LASAGFYVGR  
NDDVKCFCCDGGRLCWESGDDPWVEHAKWFPRCEFLI  
RMKGQEFVDEIQG  
RYPHLLLEQLLSTSDTTGEENADPPIHFGPGESSSEDAVM  
MNTPVVKSAL  
EMGFNRDLVKQTVQSKILTTGENYKTVNDIVSALLNAEDEK  
REEEKEKQA  
EEMASDDLIRKNRMALFQQLTCVLPILDNLLKANVINKQ  
EHDIIKQKT  
QIPLQARELIDTILVKGNAANIFKNCLKEIDSTLYKNLFVDK  
NMKYIPT  
EDVSGLSLEEQLRRLQEERTCKVCM DKEVSVVFIPCGHL  
VVCQECAPSLR KCPICRGIKGTVRTFLS

Predicted molecular weight	94 kDa
Amino acids	1 to 618

## Specifications

---

Our **Abpromise guarantee** covers the use of **ab114410** in the following tested applications.

The application notes include recommended starting dilutions; optimal dilutions/concentrations should be determined by the end user.

<b>Applications</b>	SDS-PAGE
	ELISA
	Western blot

<b>Form</b>	Liquid
-------------	--------

**Additional notes**

## Preparation and Storage

---

<b>Stability and Storage</b>	Shipped on dry ice. Upon delivery aliquot and store at -80°C. Avoid freeze / thaw cycles. pH: 8.00 Constituents: 0.3% Glutathione, 0.79% Tris HCl
------------------------------	---

## General Info

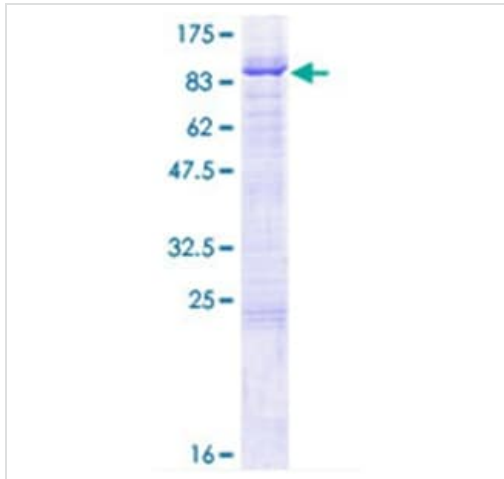
---

<b>Function</b>	Apoptotic suppressor. The BIR motifs region interacts with TNF receptor associated factors 1 and 2 (TRAF1 and TRAF2) to form an heteromeric complex, which is then recruited to the tumor necrosis factor receptor 2 (TNFR2).
<b>Tissue specificity</b>	Present in many fetal and adult tissues. Mainly expressed in adult skeletal muscle, thymus, testis, ovary, and pancreas, low or absent in brain and peripheral blood leukocytes.
<b>Sequence similarities</b>	Belongs to the IAP family. Contains 3 BIR repeats. Contains 1 CARD domain. Contains 1 RING-type zinc finger.
<b>Cellular localization</b>	Cytoplasm.

---

## Images

---



12.5% SDS-PAGE analysis of ab114410, stained with Coomassie Blue.

SDS-PAGE - Recombinant Human cIAP1 protein  
(ab114410)

**Please note:** All products are "FOR RESEARCH USE ONLY. NOT FOR USE IN DIAGNOSTIC PROCEDURES"

### Our Abpromise to you: Quality guaranteed and expert technical support

---

- Replacement or refund for products not performing as stated on the datasheet
- Valid for 12 months from date of delivery
- Response to your inquiry within 24 hours
- We provide support in Chinese, English, French, German, Japanese and Spanish
- Extensive multi-media technical resources to help you
- We investigate all quality concerns to ensure our products perform to the highest standards

If the product does not perform as described on this datasheet, we will offer a refund or replacement. For full details of the Abpromise, please visit <https://www.abcam.com/abpromise> or contact our technical team.

### Terms and conditions

---

- Guarantee only valid for products bought direct from Abcam or one of our authorized distributors