

## Product datasheet

# Recombinant Human CKMT2 protein ab128433

1 Image

### Description

---

<b>Product name</b>	Recombinant Human CKMT2 protein
<b>Purity</b>	> 90 % SDS-PAGE. purified by using conventional chromatography techniques
<b>Expression system</b>	Escherichia coli
<b>Accession</b>	<b><u>P17540</u></b>
<b>Protein length</b>	Full length protein
<b>Animal free</b>	No
<b>Nature</b>	Recombinant
<b>Species</b>	Human
<b>Sequence</b>	MGSSHHHHHH SSGLVPRGSH MGSHEVREQ PRLFPPSADY PDLRKHNNCM AECLTPAIA KLRNKVTPNG YTLDQCIQTG VDNPGHPFIK TVGMVAGDEE SYEVFADLFD PVIKLRHNGY DPRVMKHTTD LDASKITQQG FDEHYVLSSR VRTGRSIRGL SLPPACTRAE RREVENVAIT ALEGLKGDLA GRYYKLEMT EQDQQLIDD HFLFDKPVSP LLTCAGMARD WPDARGMWHN YDKTFLWIN EEDHTRVISM EKGGNMKRVF ERFCRGLKEV ERLIQERGWE FMWNERLGYI LTCPSNLGTG LRAVHVRIP KLSKDPFRFSK ILENLRLQKR GTGGVDAAV ADVYDISNID RIGRSEVELV QMIDGVNYL VDCEKKLERG QDIKVPPLP QFGKK
<b>Predicted molecular weight</b>	46 kDa including tags
<b>Amino acids</b>	40 to 419
<b>Tags</b>	His tag N-Terminus

### Specifications

---

Our **Abpromise guarantee** covers the use of **ab128433** in the following tested applications.

The application notes include recommended starting dilutions; optimal dilutions/concentrations should be determined by the end user.

<b>Applications</b>	SDS-PAGE Mass Spectrometry
---------------------	-------------------------------

<b>Mass spectrometry</b>	MALDI-TOF
<b>Form</b>	Liquid

## Preparation and Storage

---

<b>Stability and Storage</b>	Shipped at 4°C. Store at +4°C short term (1-2 weeks). Upon delivery aliquot. Store at -20°C or -80°C. Avoid freeze / thaw cycle.  pH: 8.00 Constituents: 0.02% DTT, 0.32% Tris HCl, 10% Glycerol (glycerin, glycerine), 0.58% Sodium chloride
------------------------------	--

## General Info

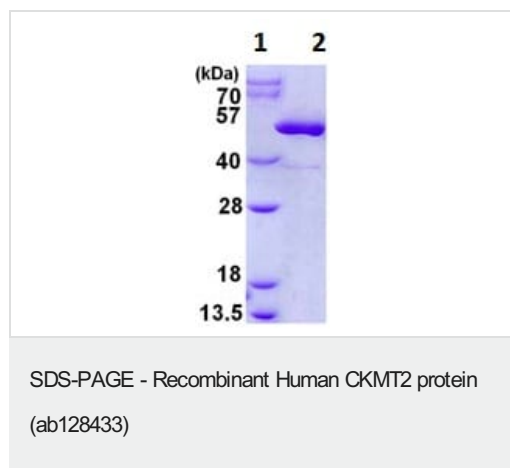
---

<b>Function</b>	Reversibly catalyzes the transfer of phosphate between ATP and various phosphagens (e.g. creatine phosphate). Creatine kinase isoenzymes play a central role in energy transduction in tissues with large, fluctuating energy demands, such as skeletal muscle, heart, brain and spermatozoa.
<b>Tissue specificity</b>	Sarcomere-specific. Found only in heart and skeletal muscles.
<b>Sequence similarities</b>	Belongs to the ATP:guanido phosphotransferase family. Contains 1 phosphagen kinase C-terminal domain. Contains 1 phosphagen kinase N-terminal domain.
<b>Cellular localization</b>	Mitochondrion inner membrane.

---

## Images

---



ab128433 analysis on a 15% SDS-PAGE gel: (1) MW marker, (2) ab128433 at 3ug

**Please note:** All products are "FOR RESEARCH USE ONLY. NOT FOR USE IN DIAGNOSTIC PROCEDURES"

## Our Promise to you: Quality guaranteed and expert technical support

---

- Replacement or refund for products not performing as stated on the datasheet
- Valid for 12 months from date of delivery

- Response to your inquiry within 24 hours
- We provide support in Chinese, English, French, German, Japanese and Spanish
- Extensive multi-media technical resources to help you
- We investigate all quality concerns to ensure our products perform to the highest standards

If the product does not perform as described on this datasheet, we will offer a refund or replacement. For full details of the Abpromise, please visit <https://www.abcam.com/abpromise> or contact our technical team.

### **Terms and conditions**

---

- Guarantee only valid for products bought direct from Abcam or one of our authorized distributors