

Product datasheet

Recombinant Human Clathrin light chain B protein ab130049

[1 Image](#)

Description

Product name	Recombinant Human Clathrin light chain B protein
Purity	> 85 % SDS-PAGE. ab130049 was purified using conventional chromatography techniques.
Expression system	Escherichia coli
Accession	<u>P09497</u>
Protein length	Full length protein
Animal free	No
Nature	Recombinant
Species	Human
Sequence	MGSSHHHHHH SSGLVPRGSH MGSMADDFGF FSSSESGAPE AAEDPAAAF LAQGESEIAG IENDEGFGAP AGSHAAPAPQ GPTSGAGSED MGTTVNGDVF QEANGPADGY AAIQADRLT QEPESIRKWR EEQRKRLQEL DAASKVTEQE WREKAKKDLE EWNQRQSEQV EKNKINNRAS EEAFVKESKE ETPGTEWEKV AQLCDFNPKS SKQCKDVSRL RSVLMSLKQT PLSR
Predicted molecular weight	26 kDa
Amino acids	1 to 211
Tags	His tag N-Terminus

Specifications

Our **Abpromise guarantee** covers the use of **ab130049** in the following tested applications.

The application notes include recommended starting dilutions; optimal dilutions/concentrations should be determined by the end user.

Applications	Mass Spectrometry SDS-PAGE
Mass spectrometry	MALDI-TOF
Form	Liquid

Preparation and Storage

Stability and Storage

Shipped at 4°C. Store at +4°C short term (1-2 weeks). Upon delivery aliquot. Store at -20°C or -80°C. Avoid freeze / thaw cycle.

pH: 8.00

Constituents: 0.004% PMSF, 0.32% Tris HCl, 10% Glycerol (glycerin, glycerine), 0.58% Sodium chloride

General Info

Function

Clathrin is the major protein of the polyhedral coat of coated pits and vesicles.

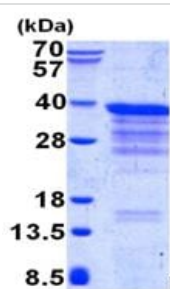
Sequence similarities

Belongs to the clathrin light chain family.

Cellular localization

Cytoplasmic vesicle membrane. Membrane > coated pit. Cytoplasmic face of coated pits and vesicles.

Images



SDS-PAGE - Recombinant Human Clathrin light chain B protein (ab130049)

15% SDS-PAGE analysis of 3 µg of Human Clathrin light chain B protein (ab130049)

Note: Molecular weight on SDS-PAGE will appear higher than predicted.

Please note: All products are "FOR RESEARCH USE ONLY. NOT FOR USE IN DIAGNOSTIC PROCEDURES"

Our Abpromise to you: Quality guaranteed and expert technical support

- Replacement or refund for products not performing as stated on the datasheet
- Valid for 12 months from date of delivery
- Response to your inquiry within 24 hours
- We provide support in Chinese, English, French, German, Japanese and Spanish
- Extensive multi-media technical resources to help you
- We investigate all quality concerns to ensure our products perform to the highest standards

If the product does not perform as described on this datasheet, we will offer a refund or replacement. For full details of the Abpromise, please visit <https://www.abcam.com/abpromise> or contact our technical team.

Terms and conditions

- Guarantee only valid for products bought direct from Abcam or one of our authorized distributors