

Product datasheet

Recombinant Human Claudin 3 protein ab114332

1 Image

Description	
Product name	Recombinant Human Claudin 3 protein
Expression system	Wheat germ
Accession	<u>O15551</u>
Protein length	Full length protein
Animal free	No
Nature	Recombinant
Species	Human
Sequence	MSMGLEITGTALAVLGWLGTIVCCALPMWRVSAFIGSNIITS QNIWEGLW MNCVVQSTGQMCKVYDSLLALPQDLQAARALIVAILLA AFGLLVALVG AQCTNCVQDDTAKAKITIVAGVLFLLAALLTLVPVSW SANT IIRDFYNPV VPEAQKREMGAGLYVGWAAAALQLLGALLCCSCPPRE KKYTATKVVYSA PRSTGPGASLGTGYDRKDYV
Predicted molecular weight	50 kDa including tags
Amino acids	1 to 220
Tags	GST tag N-Terminus

Specifications	
Our Abpromise guarantee covers the use of ab114332 in the following tested applications.	
The application notes include recommended starting dilutions; optimal dilutions/concentrations should be determined by the end user.	
Applications	Western blot ELISA SDS-PAGE
Form	Liquid
Additional notes	Protein concentration is lot specific and is above or equal to 0.15 ug/uL.

Preparation and Storage

Stability and Storage

Shipped on dry ice. Upon delivery aliquot and store at -80°C. Avoid freeze / thaw cycles.

pH: 8.00

Constituents: 0.3% Glutathione, 0.79% Tris HCl

General Info

Function

Plays a major role in tight junction-specific obliteration of the intercellular space, through calcium-independent cell-adhesion activity.

Involvement in disease

Note=CLDN3 is located in the Williams-Beuren syndrome (WBS) critical region. WBS results from a hemizygous deletion of several genes on chromosome 7q11.23, thought to arise as a consequence of unequal crossing over between highly homologous low-copy repeat sequences flanking the deleted region.

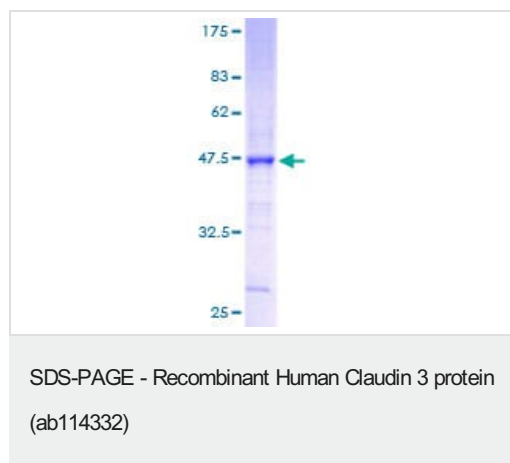
Sequence similarities

Belongs to the claudin family.

Cellular localization

Cell junction > tight junction. Cell membrane.

Images



ab114332 analysed on a 12.5% SDS-PAGE gel stained with Coomassie Blue.

Please note: All products are "FOR RESEARCH USE ONLY. NOT FOR USE IN DIAGNOSTIC PROCEDURES"

Our Abpromise to you: Quality guaranteed and expert technical support

- Replacement or refund for products not performing as stated on the datasheet
- Valid for 12 months from date of delivery
- Response to your inquiry within 24 hours
- We provide support in Chinese, English, French, German, Japanese and Spanish
- Extensive multi-media technical resources to help you
- We investigate all quality concerns to ensure our products perform to the highest standards

If the product does not perform as described on this datasheet, we will offer a refund or replacement. For full details of the Abpromise, please visit <https://www.abcam.com/abpromise> or contact our technical team.

Terms and conditions

- Guarantee only valid for products bought direct from Abcam or one of our authorized distributors