

## Product datasheet

# Recombinant Human Claudin 3 protein (Tagged) ab235064

[1 Image](#)

### Description

<b>Product name</b>	Recombinant Human Claudin 3 protein (Tagged)
<b>Purity</b>	> 90 % SDS-PAGE.
<b>Expression system</b>	Escherichia coli
<b>Accession</b>	<u><b>O15551</b></u>
<b>Protein length</b>	Protein fragment
<b>Animal free</b>	No
<b>Nature</b>	Recombinant
<b>Species</b>	Human
<b>Sequence</b>	RVSAFIGSNIITSQNIWEGLWMNCVVQSTGQMCKVYDSL LALPQDLQAA R
<b>Predicted molecular weight</b>	20 kDa including tags
<b>Amino acids</b>	30 to 80
<b>Tags</b>	His tag N-Terminus
<b>Additional sequence information</b>	N-terminal 6xHis-B2M-tag. Extracellular domain.

### Specifications

Our **Abpromise guarantee** covers the use of **ab235064** in the following tested applications.

The application notes include recommended starting dilutions; optimal dilutions/concentrations should be determined by the end user.

**Applications** SDS-PAGE

**Form** Liquid

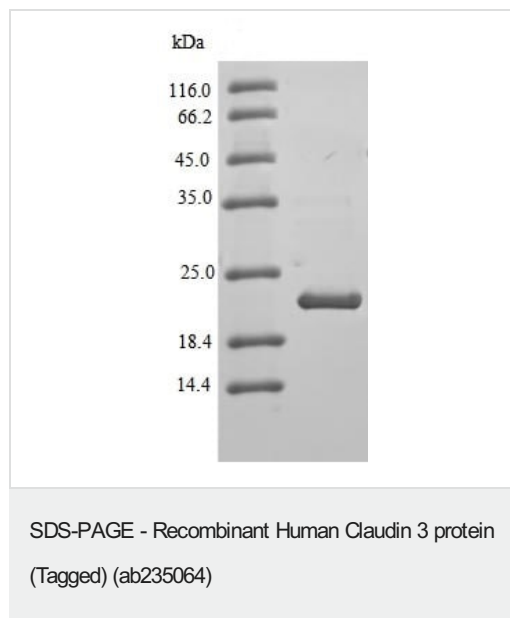
### Preparation and Storage

**Stability and Storage** Shipped at 4°C. Store at -20°C or -80°C. Avoid freeze / thaw cycle.  
pH: 7.2  
Constituents: Tris buffer, 50% Glycerol (glycerin, glycerine)

## General Info

<b>Function</b>	Plays a major role in tight junction-specific obliteration of the intercellular space, through calcium-independent cell-adhesion activity.
<b>Involvement in disease</b>	Note=CLDN3 is located in the Williams-Beuren syndrome (WBS) critical region. WBS results from a hemizygous deletion of several genes on chromosome 7q11.23, thought to arise as a consequence of unequal crossing over between highly homologous low-copy repeat sequences flanking the deleted region.
<b>Sequence similarities</b>	Belongs to the claudin family.
<b>Cellular localization</b>	Cell junction > tight junction. Cell membrane.

## Images



(Tris-Glycine gel) Discontinuous SDS-PAGE (reduced) analysis with 5% enrichment gel and 15% separation gel of ab235064.

**Please note:** All products are "FOR RESEARCH USE ONLY. NOT FOR USE IN DIAGNOSTIC PROCEDURES"

## Our Abpromise to you: Quality guaranteed and expert technical support

- Replacement or refund for products not performing as stated on the datasheet
- Valid for 12 months from date of delivery
- Response to your inquiry within 24 hours
- We provide support in Chinese, English, French, German, Japanese and Spanish
- Extensive multi-media technical resources to help you
- We investigate all quality concerns to ensure our products perform to the highest standards

If the product does not perform as described on this datasheet, we will offer a refund or replacement. For full details of the Abpromise, please visit <https://www.abcam.com/abpromise> or contact our technical team.

## Terms and conditions

---

- Guarantee only valid for products bought direct from Abcam or one of our authorized distributors