

Product datasheet

Recombinant Human CLCA1 protein ab114722

1 Image

Description	
Product name	Recombinant Human CLCA1 protein
Expression system	Wheat germ
Accession	<u>A8K7I4</u>
Protein length	Protein fragment
Animal free	No
Nature	Recombinant
Species	Human
Sequence	ALGGVNAARRRVIPQQSGALYPGWIEDEIQWNPPRPEIN KDDVQHKQV CFSRTSSGGSFVASDVPNAPIPDLFPPGQITDLKAEIHGG SLINLTWTAP
Predicted molecular weight	37 kDa including tags
Amino acids	677 to 776

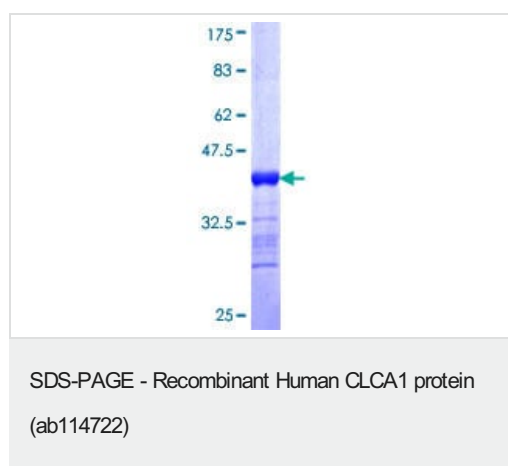
Specifications	
Our Abpromise guarantee covers the use of ab114722 in the following tested applications.	
The application notes include recommended starting dilutions; optimal dilutions/concentrations should be determined by the end user.	
Applications	Western blot SDS-PAGE ELISA
Form	Liquid

Preparation and Storage	
Stability and Storage	Shipped on dry ice. Upon delivery aliquot and store at -80°C. Avoid freeze / thaw cycles. pH: 8.00 Constituents: 0.3% Glutathione, 0.79% Tris HCl

General Info	
--------------	--

Function	May be involved in mediating calcium-activated chloride conductance. May play critical roles in goblet cell metaplasia, mucus hypersecretion, cystic fibrosis and AHR. May be involved in the regulation of mucus production and/or secretion by goblet cells. Involved in the regulation of tissue inflammation in the innate immune response. May play a role as a tumor suppressor. Induces MUC5AC.
Tissue specificity	Highly expressed in small intestine and colon namely in intestinal basal crypt epithelia and goblet cells, and appendix. Weakly expressed in uterus, testis and kidney. Expressed in the airways epithelium of both asthmatic and healthy patients. Expressed in the bronchial epithelium, especially in mucus-producing goblet cells. Expressed in normal turbinate mucosa and nasal polyp. Expressed in.
Sequence similarities	Belongs to the CLCR family. Contains 1 VWFA domain.
Post-translational modifications	Glycosylated. The 125-kDa product is processed and yields to two cell-surface-associated subunits, a 90-kDa protein and a group of 37-to 41-kDa proteins.
Cellular localization	Secreted > extracellular space. Cell membrane. Protein that remains attached to the plasma membrane appeared to be predominantly localized to microvilli.

Images



12.5% SDS-PAGE Stained with Coomassie Blue

Please note: All products are "FOR RESEARCH USE ONLY. NOT FOR USE IN DIAGNOSTIC PROCEDURES"

Our Abpromise to you: Quality guaranteed and expert technical support

- Replacement or refund for products not performing as stated on the datasheet
- Valid for 12 months from date of delivery
- Response to your inquiry within 24 hours
- We provide support in Chinese, English, French, German, Japanese and Spanish
- Extensive multi-media technical resources to help you
- We investigate all quality concerns to ensure our products perform to the highest standards

If the product does not perform as described on this datasheet, we will offer a refund or replacement. For full details of the Abpromise, please visit <https://www.abcam.com/abpromise> or contact our technical team.

Terms and conditions

- Guarantee only valid for products bought direct from Abcam or one of our authorized distributors