

Product datasheet

Recombinant Human CLEC2D protein ab132623

1 Image

Description

Product name	Recombinant Human CLEC2D protein
Expression system	Wheat germ
Accession	<u>Q9UHP7</u>
Protein length	Protein fragment
Animal free	No
Nature	Recombinant
Species	Human
Sequence	MHDSNNVEKDITPSELPANPGCVHSKEHSIKATLIWRLFFL IMFLTIVC GMVAALSAIRANCHQEPSVCLQAACPESWIGFQRKCFYF SDDTKNWTSSQ RFCDSQDADLAQVESFQELNFLRLRYKGPSDHWIGLSREQ GQPWKWINGTE WTRQ
Predicted molecular weight	43 kDa including tags
Amino acids	1 to 154

Specifications

Our **Abpromise guarantee** covers the use of **ab132623** in the following tested applications.

The application notes include recommended starting dilutions; optimal dilutions/concentrations should be determined by the end user.

Applications	ELISA SDS-PAGE Western blot
Form	Liquid

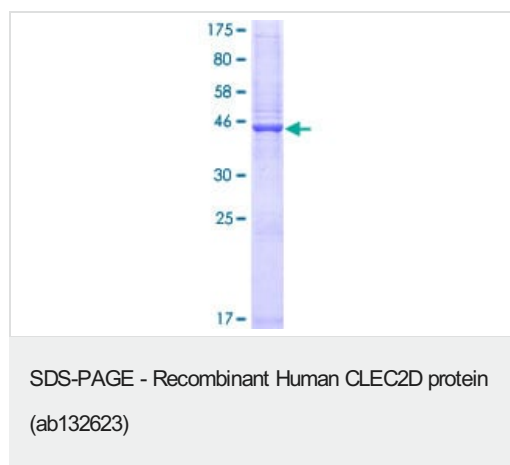
Preparation and Storage

Stability and Storage	Shipped on dry ice. Upon delivery aliquot and store at -80°C. Avoid freeze / thaw cycles. pH: 8.00 Constituents: 0.31% Glutathione, 0.79% Tris HCl
------------------------------	--

General Info

Function	Receptor for KLRB1 that protects target cells against natural killer cell-mediated lysis. Inhibits osteoclast formation. Inhibits bone resorption. Modulates the release of interferon-gamma. Binds high molecular weight sulfated glycosaminoglycans.
Tissue specificity	Detected in peripheral blood leukocytes, osteoblasts, lymph node, thymus and spleen. Isoform 1, isoform 2 and isoform 4 are expressed in T and B lymphocytes, and at lower levels in NK cells. They are also expressed in B-cell lines and LPS-matured monocyte-derived dendritic cells.
Sequence similarities	Contains 1 C-type lectin domain.
Cellular localization	Endoplasmic reticulum and Cell membrane. Cell surface.

Images



12.5% SDS-PAGE analysis of ab132623 stained with Coomassie Blue.

Please note: All products are "FOR RESEARCH USE ONLY. NOT FOR USE IN DIAGNOSTIC PROCEDURES"

Our Abpromise to you: Quality guaranteed and expert technical support

- Replacement or refund for products not performing as stated on the datasheet
- Valid for 12 months from date of delivery
- Response to your inquiry within 24 hours
- We provide support in Chinese, English, French, German, Japanese and Spanish
- Extensive multi-media technical resources to help you
- We investigate all quality concerns to ensure our products perform to the highest standards

If the product does not perform as described on this datasheet, we will offer a refund or replacement. For full details of the Abpromise, please visit <https://www.abcam.com/abpromise> or contact our technical team.

Terms and conditions

- Guarantee only valid for products bought direct from Abcam or one of our authorized distributors