

## Product datasheet

# Recombinant Human CMPK2 protein ab165315

1 Image

### Description

<b>Product name</b>	Recombinant Human CMPK2 protein
<b>Expression system</b>	Wheat germ
<b>Protein length</b>	Protein fragment
<b>Animal free</b>	No
<b>Nature</b>	Recombinant
<b>Species</b>	Human
<b>Sequence</b>	GACQEAPRPHLGEFEADPRGQLWQRLWEVQDGRRRLQV GCAQVVPVPEPPL HPVVPDLPSSVVFPDREAARAVLEECTSFIPEARAVLDLV DQCPKQIQKG
<b>Amino acids</b>	151 to 250
<b>Tags</b>	GST tag N-Terminus

### Specifications

Our **Abpromise guarantee** covers the use of **ab165315** in the following tested applications.

The application notes include recommended starting dilutions; optimal dilutions/concentrations should be determined by the end user.

<b>Applications</b>	Western blot ELISA
<b>Form</b>	Liquid
<b>Additional notes</b>	

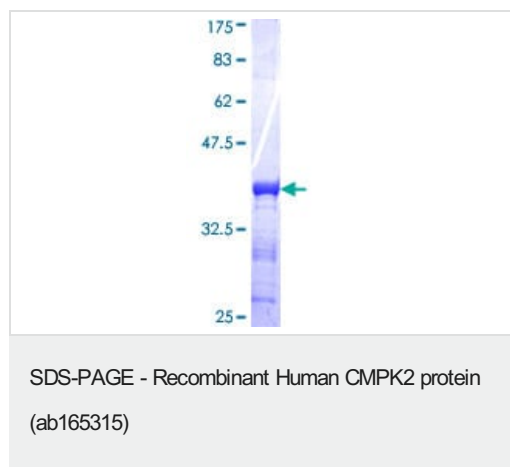
### Preparation and Storage

<b>Stability and Storage</b>	Shipped on dry ice. Upon delivery aliquot and store at -80°C. Avoid freeze / thaw cycles. pH: 8.00 Constituents: 0.31% Glutathione, 0.79% Tris HCl
------------------------------	--

### General Info

<b>Function</b>	May participate in dUTP and dCTP synthesis in mitochondria. Is able to phosphorylate dUMP, dCMP, CMP, UMP and monophosphates of the pyrimidine nucleoside analogs ddC, dFdC, araC, BVDU and FdUrd with ATP as phosphate donor. Efficacy is highest for dUMP followed by dCMP; CMP and UMP are poor substrates. May be involved in mtDNA depletion caused by long term treatment with ddC or other pyrimidine analogs.
<b>Tissue specificity</b>	Among all investigated tumors, leukemia cells show the most abundant expression.
<b>Sequence similarities</b>	Belongs to the thymidylate kinase family.
<b>Cellular localization</b>	Mitochondrion.

## Images



ab165315 on a 12.5% SDS-PAGE stained with Coomassie Blue.

**Please note:** All products are "FOR RESEARCH USE ONLY. NOT FOR USE IN DIAGNOSTIC PROCEDURES"

## Our Abpromise to you: Quality guaranteed and expert technical support

- Replacement or refund for products not performing as stated on the datasheet
- Valid for 12 months from date of delivery
- Response to your inquiry within 24 hours
- We provide support in Chinese, English, French, German, Japanese and Spanish
- Extensive multi-media technical resources to help you
- We investigate all quality concerns to ensure our products perform to the highest standards

If the product does not perform as described on this datasheet, we will offer a refund or replacement. For full details of the Abpromise, please visit <https://www.abcam.com/abpromise> or contact our technical team.

## Terms and conditions

- Guarantee only valid for products bought direct from Abcam or one of our authorized distributors