

Recombinant human CNDP1/CN1 protein (Active)
ab219456

1 Image

Description

Product name	Recombinant human CNDP1/CN1 protein (Active)		
Biological activity	Specific activity is >3,000 pmol/min/ug, and as measured by the hydrolysis of carnosine per minute at pH 6.8 at 25 degrees.		
Purity	> 95 % SDS-PAGE. Affinity purified		
Endotoxin level	< 1.000 Eu/µg		
Expression system	Baculovirus infected insect cells		
Accession	<u>Q96KN2</u>		
Protein length	Full length protein		
Animal free	No		
Nature	Recombinant		
Species	Human		
Sequence	SPSPPPALLE KVFQYIDLHQ DEFVQTLKEW VAIESDSVQP VPRFRQELFRMMAVAADTLQRLGARVASVDMGPQQLPD GQSLPIPPVILA ELGSDPTKGTVCFYGHLDVQPADRGDGWLTDPYVLTEVD GKLYGRGATDN KGPVLAWINAVSAFRALEQD LPVNIKFIIEGMEEAGSVALEELVEKEKDRFFSGVDYVISD NLWISQRK PAITYGTRGNSYFMVEVKCRDQDFHSGTFGGILHEPMADL VALLGSLVDS SGHILVPGIDEVVPLTEEEINTYKAHLDLEEYRNSSRVEK FLFDTKEE ILMHLWRYP SLSIHGIEGAFDEPGTKTVIPGRVIGKFSIRLVP HMNVSAV EKQVTRHLEDVFSKRNSSNKMVVSMTLGLHPWIANIDDTQ YLAACKRAIRT VFGTEPDMIRDGSTIPIAKMFQEIHKSVVLIPLGAVDDGEH SQNEKINR WNYIEGTKLFAAFFLEMAQLHLEHHHHHH		
Predicted molecular weight	55 kDa including tags		

Amino acids	27 to 507
Tags	His tag C-Terminus
Additional sequence information	Mature protein without signal peptide.

Specifications

Our **Abpromise guarantee** covers the use of **ab219456** in the following tested applications.

The application notes include recommended starting dilutions; optimal dilutions/concentrations should be determined by the end user.

Applications	SDS-PAGE
Additional notes	This product was previously labelled as CNDP1

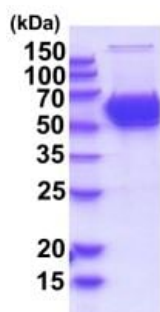
Preparation and Storage

Stability and Storage	<p>Shipped at 4°C. Store at +4°C short term (1-2 weeks). Upon delivery aliquot. Store at -20°C or -80°C. Avoid freeze / thaw cycle.</p> <p>pH: 7.40</p> <p>Constituents: 10% Glycerol (glycerin, glycerine), 90% PBS</p> <p>This product is an active protein and may elicit a biological response in vivo, handle with caution.</p>
------------------------------	--

General Info

Tissue specificity	Found in serum and adult nervous central system. Absent in serum from patients with homocarnosinosis.
Sequence similarities	Belongs to the peptidase M20A family.
Cellular localization	Secreted.

Images



15% SDS-PAGE using 3ug of ab219456.

SDS-PAGE - Recombinant human CNDP1/CN1
protein (Active) (ab219456)

Please note: All products are "FOR RESEARCH USE ONLY. NOT FOR USE IN DIAGNOSTIC PROCEDURES"

Our Abpromise to you: Quality guaranteed and expert technical support

- Replacement or refund for products not performing as stated on the datasheet
- Valid for 12 months from date of delivery
- Response to your inquiry within 24 hours

- We provide support in Chinese, English, French, German, Japanese and Spanish
- Extensive multi-media technical resources to help you
- We investigate all quality concerns to ensure our products perform to the highest standards

If the product does not perform as described on this datasheet, we will offer a refund or replacement. For full details of the Abpromise, please visit <https://www.abcam.com/abpromise> or contact our technical team.

Terms and conditions

- Guarantee only valid for products bought direct from Abcam or one of our authorized distributors