

Product datasheet

Recombinant Human COTL1 protein ab116193

1 Image

Description

Product name	Recombinant Human COTL1 protein
Purity	> 90 % SDS-PAGE. ab116193 was purified using conventional chromatography techniques.
Expression system	Escherichia coli
Accession	<u>Q14019</u>
Protein length	Full length protein
Animal free	No
Nature	Recombinant
Species	Human
Sequence	MGSSHHHHHH SSVGLVPRGSH MATKIDKEAC RAAYNLVRDD GSAVIMVTFK YDGSTVPGE QGAEYQHFIQ QCTDDVRLFA FVRFTTGDAMSKRSKFALIT WIGENVSGQLQ RAKTGTDKTL VKEVVQNFAK EFVISDRKEL EEDFIKSELK KAGGANYDAQ TE
Predicted molecular weight	18 kDa including tags
Amino acids	1 to 142
Tags	His tag N-Terminus

Specifications

Our **Abpromise guarantee** covers the use of **ab116193** in the following tested applications.

The application notes include recommended starting dilutions; optimal dilutions/concentrations should be determined by the end user.

Applications	SDS-PAGE Mass Spectrometry
Mass spectrometry	MALDI-TOF
Form	Liquid

Preparation and Storage

Stability and Storage Shipped at 4°C. Store at +4°C short term (1-2 weeks). Upon delivery aliquot. Store at -20°C or -80°C. Avoid freeze / thaw cycle.

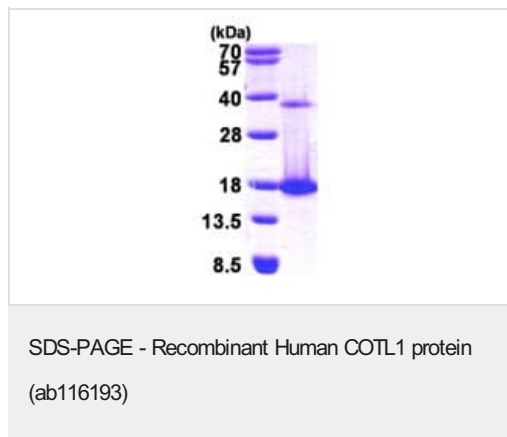
pH: 8.00

Constituents: 0.02% DTT, 0.32% Tris HCl, 10% Glycerol (glycerin, glycerine), 0.58% Sodium chloride

General Info

Function	Binds to F-actin in a calcium-independent manner. Has no direct effect on actin depolymerization.
Tissue specificity	Widely expressed with highest levels in placenta, lung, kidney and peripheral blood leukocytes and lower levels in brain, liver and pancreas.
Sequence similarities	Belongs to the actin-binding proteins ADF family. Coactosin subfamily. Contains 1 ADF-H domain.
Cellular localization	Cytoplasm > cytoskeleton.

Images



15% SDS-PAGE showing ab116193 at approximately 18.1kDa (3µg).

Please note: All products are "FOR RESEARCH USE ONLY. NOT FOR USE IN DIAGNOSTIC PROCEDURES"

Our Abpromise to you: Quality guaranteed and expert technical support

- Replacement or refund for products not performing as stated on the datasheet
- Valid for 12 months from date of delivery
- Response to your inquiry within 24 hours
- We provide support in Chinese, English, French, German, Japanese and Spanish
- Extensive multi-media technical resources to help you
- We investigate all quality concerns to ensure our products perform to the highest standards

If the product does not perform as described on this datasheet, we will offer a refund or replacement. For full details of the Abpromise, please visit <https://www.abcam.com/abpromise> or contact our technical team.

Terms and conditions

- Guarantee only valid for products bought direct from Abcam or one of our authorized distributors