

# Recombinant Human Creatine kinase B type protein

## ab222357

1 Image

Description

Product name	Recombinant Human Creatine kinase B type protein
Purity	> 90 % SDS-PAGE. Purified by conventional chromatography techniques.
Expression system	Escherichia coli
Accession	<u>P12277</u>
Protein length	Full length protein
Animal free	No
Nature	Recombinant
Species	Human
Sequence	MPFSNSHNALKLRFP AEDEF PDLSAHNNHMAKVLTPELY AELRAKSTPSG FTLDDVIQTG VDNPGHPYIMTVGCVAGDEESYEVFKDLFDPIIEDRHG GYKPSDEHKTDLNPDNLQGGDD LDPNYVLSSRVRTGRSIRGFCLPPHC SRGERRAIEKLAVEALSSLDGDLAGRYYALKSMT EAEQQQLIDDHFLF DKPVSPLLLASGMARDWPDARGWHNDNKTFVLVWVNEE DHLRVISM QK GGNMKEVFTRFCTGLTQIETLFKSKDYEFMWNPHLGYLTC PSNLGTGLR AGVHIKLP NLGKHEKFSEVLKRLRLQKRGTGGVDTA AVGGVFDVSNA D RLG FSEVELVQM VVDGVKLL IEMEQRLEQGG AIDDLMPAQK
Predicted molecular weight	43 kDa
Amino acids	1 to 381

Specifications

Our **Abpromise guarantee** covers the use of **ab222357** in the following tested applications.

The application notes include recommended starting dilutions; optimal dilutions/concentrations should be determined by the end user.

Applications	SDS-PAGE
--------------	----------

<b>Mass spectrometry</b>	MALDI-TOF
<b>Form</b>	Liquid

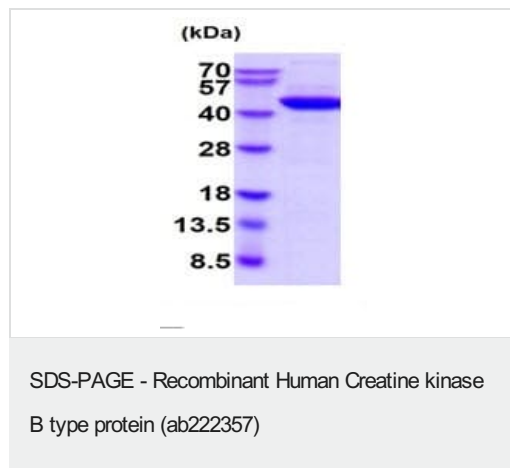
## Preparation and Storage

<b>Stability and Storage</b>	Store at +4°C short term (1-2 weeks). Upon delivery aliquot. Store at -20°C or -80°C. Avoid freeze / thaw cycle.  pH: 8.00 Constituents: 0.02% DTT, 10% Glycerol (glycerin, glycerine), 0.32% Tris HCl
------------------------------	-----------------------------------------------------------------------------------------------------------------------------------------------------------------------------------------------------------------

## General Info

<b>Function</b>	Reversibly catalyzes the transfer of phosphate between ATP and various phosphogens (e.g. creatine phosphate). Creatine kinase isoenzymes play a central role in energy transduction in tissues with large, fluctuating energy demands, such as skeletal muscle, heart, brain and spermatozoa.
<b>Sequence similarities</b>	Belongs to the ATP:guanido phosphotransferase family. Contains 1 phosphagen kinase C-terminal domain. Contains 1 phosphagen kinase N-terminal domain.
<b>Cellular localization</b>	Cytoplasm.

## Images



Recombinant human Creatine kinase B type (3µg) analysed by 15% SDS-PAGE.

**Please note:** All products are "FOR RESEARCH USE ONLY. NOT FOR USE IN DIAGNOSTIC PROCEDURES"

## Our Abpromise to you: Quality guaranteed and expert technical support

- Replacement or refund for products not performing as stated on the datasheet
- Valid for 12 months from date of delivery
- Response to your inquiry within 24 hours
- We provide support in Chinese, English, French, German, Japanese and Spanish

- Extensive multi-media technical resources to help you
- We investigate all quality concerns to ensure our products perform to the highest standards

If the product does not perform as described on this datasheet, we will offer a refund or replacement. For full details of the Abpromise, please visit <https://www.abcam.com/abpromise> or contact our technical team.

#### **Terms and conditions**

---

- Guarantee only valid for products bought direct from Abcam or one of our authorized distributors