

## Product datasheet

# Recombinant human CSK protein (Active) ab268428

[2 Images](#)

### Description

---

<b>Product name</b>	Recombinant human CSK protein (Active)
<b>Biological activity</b>	The specific activity of ab268428 was 365 nmol/min/mg in a kinase assay using Poly (Glu <sub>4</sub> , Tyr <sub>1</sub> ) as substrate.
<b>Purity</b>	> 90 % SDS-PAGE. Affinity purified.
<b>Expression system</b>	Baculovirus infected Sf9 cells
<b>Accession</b>	<b><u>P41240</u></b>
<b>Protein length</b>	Full length protein
<b>Animal free</b>	No
<b>Nature</b>	Recombinant
<b>Species</b>	Human
<b>Molecular weight information</b>	~75 kDa by SDS-PAGE
<b>Tags</b>	GST tag N-Terminus
<b>Additional sequence information</b>	GenBank: NM_004383

### Specifications

---

Our **Abpromise guarantee** covers the use of **ab268428** in the following tested applications.

The application notes include recommended starting dilutions; optimal dilutions/concentrations should be determined by the end user.

<b>Applications</b>	Functional Studies SDS-PAGE
<b>Form</b>	Liquid

### Preparation and Storage

---

<b>Stability and Storage</b>	Shipped on Dry Ice. Upon delivery aliquot. Store at -80°C. Avoid freeze / thaw cycle. pH: 7.50 Constituents: 0.79% Tris HCl, 0.87% Sodium chloride, 0.004% DTT, 0.003% EDTA, 0.002% PMSF, 25% Glycerol (glycerin, glycerine) This product is an active protein and may elicit a biological response in vivo, handle with caution.
------------------------------	--

## General Info

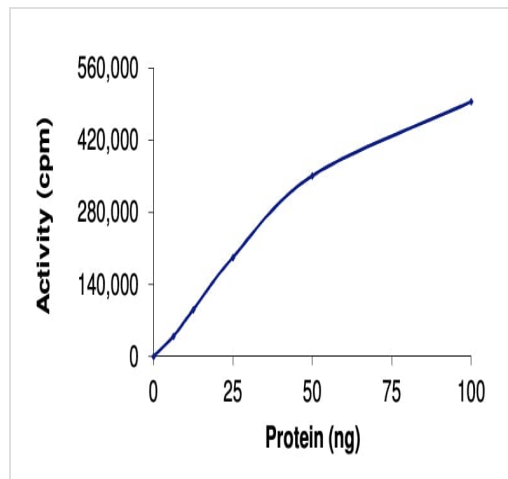
---

<b>Function</b>	Specifically phosphorylates 'Tyr-504' on LCK, which acts as a negative regulatory site. Can also act on the LYN and FYN kinases.
<b>Tissue specificity</b>	Expressed in lung and macrophages.
<b>Sequence similarities</b>	Belongs to the protein kinase superfamily. Tyr protein kinase family. CSK subfamily. Contains 1 protein kinase domain. Contains 1 SH2 domain. Contains 1 SH3 domain.
<b>Post-translational modifications</b>	Autophosphorylation of Tyr-304 occurs only at abnormally high CSK concentrations in vitro.
<b>Cellular localization</b>	Cytoplasm. Cell membrane. Mainly cytoplasmic, also present in lipid rafts.

---

## Images

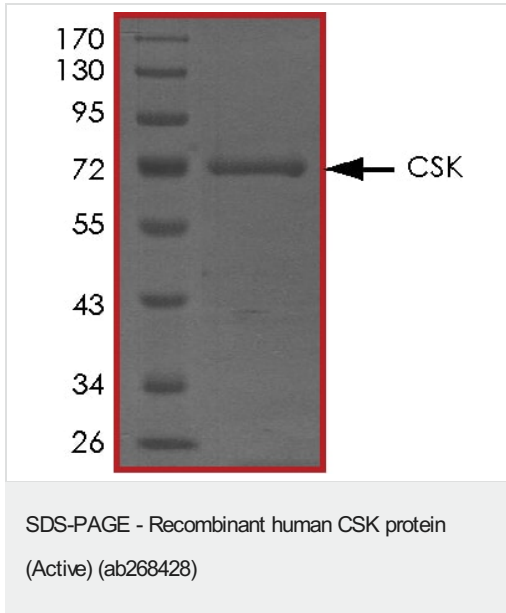
---



The specific activity of ab268428 was 365 nmol/min/mg in a kinase assay using Poly (Glu<sub>4</sub>, Tyr<sub>1</sub>) as substrate.

Functional Studies - Recombinant human CSK protein (Active) (ab268428)

SDS-PAGE analysis of ab268428.



**Please note:** All products are "FOR RESEARCH USE ONLY. NOT FOR USE IN DIAGNOSTIC PROCEDURES"

#### Our Abpromise to you: Quality guaranteed and expert technical support

---

- Replacement or refund for products not performing as stated on the datasheet
- Valid for 12 months from date of delivery
- Response to your inquiry within 24 hours
- We provide support in Chinese, English, French, German, Japanese and Spanish
- Extensive multi-media technical resources to help you
- We investigate all quality concerns to ensure our products perform to the highest standards

If the product does not perform as described on this datasheet, we will offer a refund or replacement. For full details of the Abpromise, please visit <https://www.abcam.com/abpromise> or contact our technical team.

#### Terms and conditions

---

- Guarantee only valid for products bought direct from Abcam or one of our authorized distributors