

Product datasheet

Recombinant Human Ctip1/BCL-11A protein ab112415

[1 Image](#)

Description

Product name	Recombinant Human Ctip1/BCL-11A protein
Expression system	Wheat germ
Accession	<u>Q9H165</u>
Protein length	Protein fragment
Animal free	No
Nature	Recombinant
Species	Human
Sequence	MSRRKQGKPKQLSKREFSPEPLEAILTDDEPDHGPLGAP EGDHDLLTCGQ CQMNFLGDILIFIEHKRKQCNGSLCLEKAVDKPPSPS
Predicted molecular weight	35 kDa including tags
Amino acids	1 to 88

Specifications

Our **Abpromise guarantee** covers the use of **ab112415** in the following tested applications.

The application notes include recommended starting dilutions; optimal dilutions/concentrations should be determined by the end user.

Applications	SDS-PAGE Western blot ELISA
Form	Liquid
Additional notes	Previously labelled as Ctip1.

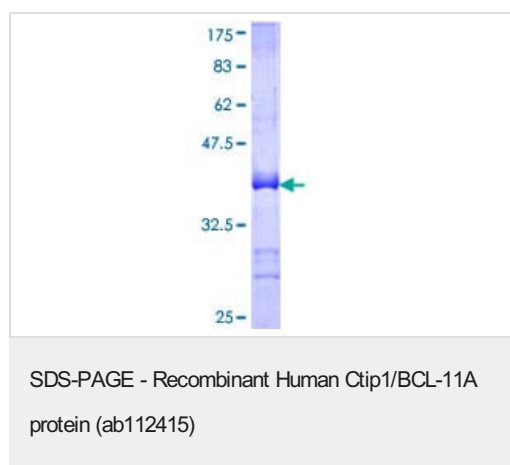
Preparation and Storage

Stability and Storage	Shipped on dry ice. Upon delivery aliquot and store at -80°C. Avoid freeze / thaw cycles. pH: 8.00 Constituents: 0.31% Glutathione, 0.79% Tris HCl
------------------------------	--

General Info

Function	Functions as a myeloid and B-cell proto-oncogene. May play important roles in leukemogenesis and hematopoiesis. An essential factor in lymphopoiesis, is required for B-cell formation in fetal liver. May function as a modulator of the transcriptional repression activity of ARP1.
Tissue specificity	Expressed at high levels in brain, spleen thymus, bone marrow and testis. Expressed in CD34-positive myeloid precursor cells, B-cells, monocytes and megakaryocytes. Expression is tightly regulated during B-cell development.
Involvement in disease	Note=Chromosomal aberrations involving BCL11A may be a cause of lymphoid malignancies. Translocation t(2;14)(p13;q32.3) causes BCL11A deregulation and amplification.
Sequence similarities	Contains 6 C2H2-type zinc fingers.
Post-translational modifications	Sumoylated by SUMO1.
Cellular localization	Cytoplasm. Nucleus. Associates with the nuclear body. Colocalizes with SUMO1 and SENP2 in nuclear speckles.

Images



12.5% SDS-PAGE showing ab112415 stained with Coomassie Blue.

Please note: All products are "FOR RESEARCH USE ONLY. NOT FOR USE IN DIAGNOSTIC PROCEDURES"

Our Abpromise to you: Quality guaranteed and expert technical support

- Replacement or refund for products not performing as stated on the datasheet
- Valid for 12 months from date of delivery
- Response to your inquiry within 24 hours
- We provide support in Chinese, English, French, German, Japanese and Spanish
- Extensive multi-media technical resources to help you
- We investigate all quality concerns to ensure our products perform to the highest standards

If the product does not perform as described on this datasheet, we will offer a refund or replacement. For full details of the Abpromise,

please visit <https://www.abcam.com/abpromise> or contact our technical team.

Terms and conditions

- Guarantee only valid for products bought direct from Abcam or one of our authorized distributors