

Product datasheet

Recombinant human Cyclin E1 + CDK3 protein (Active) ab196131

[2 Images](#)

Description

Product name	Recombinant human Cyclin E1 + CDK3 protein (Active)
Biological activity	Specific activity of ab196131 was determined to be 30 pmol/min/μg. Assay Conditions: Kinase buffer containing 1 mM DTT using Histone H1 (0.1 mg/mL) substrate and 20 μM ATP at 30°C for 50 min.
Purity	> 90 % SDS-PAGE. Affinity purified.
Expression system	Baculovirus infected Sf9 cells
Accession	<u>Q00526</u> <u>P24864</u>
Protein length	Full length protein
Animal free	No
Nature	Recombinant
Amino Acid Sequence 1	
Species	Human
Predicted molecular weight	60 kDa
Tags	GST tag N-Terminus
Additional sequence information	Recombinant full length human Cdk3 (NM_001258)
Amino Acid Sequence 2	
Species	Human
Predicted molecular weight	73 kDa
Additional sequence information	Recombinant full length Cyclin E1 (NM_001238)

Specifications

Our **Abpromise guarantee** covers the use of **ab196131** in the following tested applications.

The application notes include recommended starting dilutions; optimal dilutions/concentrations should be determined by the end user.

Applications	SDS-PAGE Functional Studies
---------------------	--------------------------------

Form Liquid

Additional notes This is a complex of Cdk3 and Cyclin E1 Co-expressed in a Baculovirus-infected Sf9 cell expression system.

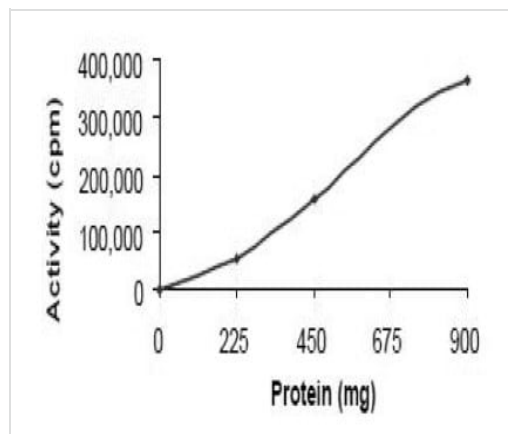
Preparation and Storage

Stability and Storage Shipped on Dry Ice. Store at -80°C. Avoid freeze / thaw cycle.
pH: 8.00
Constituents: 0.63% Tris HCl, 0.64% Sodium chloride, 0.02% Potassium chloride, 0.12% Glutathione, 0.0462% (R*,R*)-1,4-Dimercaptobutan-2,3-diol
This product is an active protein and may elicit a biological response in vivo, handle with caution.

General Info

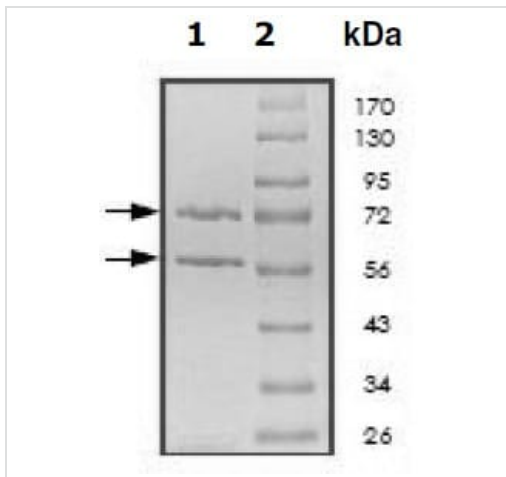
Cellular localization Cyclin E1: Nucleus.

Images



Specific activity of ab196131 was determined to be 30 pmol/min/μg.

Functional Studies - Recombinant human Cyclin E1
+ Cdk3 protein (Active) (ab196131)



10% SDS-PAGE analysis of ab196131 stained with Coomassie Blue.

Lane 1: Cdk3 Lower band and Cyclin E1 upper band

Lane 2: Protein Marker

SDS-PAGE - Recombinant human Cyclin E1 +
Cdk3 protein (Active) (ab196131)

Please note: All products are "FOR RESEARCH USE ONLY. NOT FOR USE IN DIAGNOSTIC PROCEDURES"

Our Abpromise to you: Quality guaranteed and expert technical support

- Replacement or refund for products not performing as stated on the datasheet
- Valid for 12 months from date of delivery
- Response to your inquiry within 24 hours
- We provide support in Chinese, English, French, German, Japanese and Spanish
- Extensive multi-media technical resources to help you
- We investigate all quality concerns to ensure our products perform to the highest standards

If the product does not perform as described on this datasheet, we will offer a refund or replacement. For full details of the Abpromise, please visit <https://www.abcam.com/abpromise> or contact our technical team.

Terms and conditions

- Guarantee only valid for products bought direct from Abcam or one of our authorized distributors