

Recombinant human Cyclophilin A protein (Active) ab86219

[7 References](#) [1 Image](#)

Description

Product name	Recombinant human Cyclophilin A protein (Active)
Biological activity	Specific activity is >650 nmoles/min/mg, and is defined as the amount of enzyme that cleaves 1 nmole of suc-AAPF-pNA per minute at 37°C in Tris-HCl pH8.0 using chymotrypsin.
Activity Assay	<p>Prepare 180µl assay buffer into a suitable container:</p> <p>Test is 120µl of 200mM Tris-HCl pH8.0, 50µl of 20nM chymotrypsin and 10µl of 100µg/ml Cyclophilin A protein.</p> <p>Blank is 130µl of 200mM Tris-HCl pH8.0 and 50µl of 20nM chymotrypsin.</p> <p>Equilibrate to 37°C and monitor the A405nm until value is constant using a spectrophotometer.</p> <p>Load 20µl of 5mM Suc-AAPF-pNA into plate. (460mM Lithium chloride, 3mM 2,2,2-Trifluoroethanol in DW. The suc-AAPF-pNA is first dissolved in DMSO and diluted once in 200 mM Tris-HCl (pH8.0). Finally, manufacture the final 5mM with 460mM Lithium chloride, 3mM 2,2,2-Trifluoroethanol).</p> <p>Add 180µl of assay buffer in 5mM Suc-AAPF-pNA.</p> <p>Record the absorbance A405nm for 40 minutes at 37 °C.</p>
Purity	<p>> 95 % SDS-PAGE.</p> <p>Purified by using conventional chromatography techniques.</p>
Endotoxin level	< 1.000 Eu/µg
Expression system	Escherichia coli
Accession	<u>P62937</u>
Protein length	Full length protein
Animal free	No
Nature	Recombinant
Species	Human
Sequence	<p>MGSSHHHHHH SSGLVPRGSH MVNPTVFFDI</p> <p>AVDGEPLGRV SFELFADKVP KTAENFRALS</p> <p>TGEKGFGYKG SCFHRIIPGF MCQGGDFTRH</p> <p>NGTGGKSIYG EKFEDEFIL KHTGPGILSM ANAGPNTNGS</p> <p>QFFICTAKTE WLDGKHVVFG KVKEGMNVE</p> <p>AMERFGSRNG KTSKKITIAD CGQLE</p>

Predicted molecular weight	20 kDa including tags
Actual molecular weight	20 kDa including tags
Amino acids	1 to 165
Tags	His tag N-Terminus
Additional sequence information	(NP_066953)

Specifications

Our **Abpromise guarantee** covers the use of **ab86219** in the following tested applications.

The application notes include recommended starting dilutions; optimal dilutions/concentrations should be determined by the end user.

Applications	Functional Studies SDS-PAGE
Mass spectrometry	MALDI-TOF
Form	Liquid
Additional notes	MW confirmed by MALDI-TOF. Concentration determined by Bradford assay. Endotoxin levels determined by LAL method.

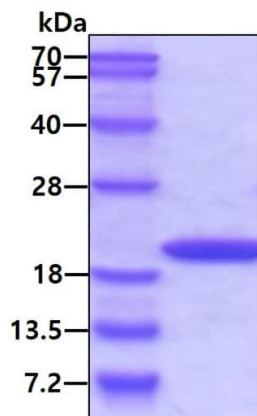
Preparation and Storage

Stability and Storage	Shipped at 4°C. Store at +4°C short term (1-2 weeks). Upon delivery aliquot. Store at -20°C or -80°C. Avoid freeze / thaw cycle. pH: 8.00 Constituents: 0.116% Sodium chloride, 10% Glycerol, 0.242% Tris, 0.0077% DTT This product is an active protein and may elicit a biological response in vivo, handle with caution.
------------------------------	--

General Info

Function	PPases accelerate the folding of proteins. It catalyzes the cis-trans isomerization of proline imidic peptide bonds in oligopeptides.
Sequence similarities	Belongs to the cyclophilin-type PPase family. PPase A subfamily. Contains 1 PPase cyclophilin-type domain.
Cellular localization	Cytoplasm.

Images



SDS-PAGE - Recombinant human Cyclophilin A protein (Active) (ab86219)

3ug by SDS-PAGE under reducing conditions and visualized by coomassie blue stain.

Please note: All products are "FOR RESEARCH USE ONLY. NOT FOR USE IN DIAGNOSTIC PROCEDURES"

Our Abpromise to you: Quality guaranteed and expert technical support

- Replacement or refund for products not performing as stated on the datasheet
- Valid for 12 months from date of delivery
- Response to your inquiry within 24 hours
- We provide support in Chinese, English, French, German, Japanese and Spanish
- Extensive multi-media technical resources to help you
- We investigate all quality concerns to ensure our products perform to the highest standards

If the product does not perform as described on this datasheet, we will offer a refund or replacement. For full details of the Abpromise, please visit <https://www.abcam.com/abpromise> or contact our technical team.

Terms and conditions

- Guarantee only valid for products bought direct from Abcam or one of our authorized distributors