

## Product datasheet

# Recombinant Human CYR61/CCN1 protein (His tag) ab235689

[1 Image](#)

### Description

---

<b>Product name</b>	Recombinant Human CYR61/CCN1 protein (His tag)
<b>Purity</b>	> 90 % SDS-PAGE.
<b>Expression system</b>	Escherichia coli
<b>Accession</b>	<b><u>O00622</u></b>
<b>Protein length</b>	Full length protein
<b>Animal free</b>	No
<b>Nature</b>	Recombinant
<b>Species</b>	Human
<b>Sequence</b>	TCPAACHCPLEAPKCAPGVGLVRDGCCKVCAKQLNE DCSKTQPCDHTK GLECNFGASSTALKGICRAQSEGRPCEYNSRIYQNGESFQ PNCKHQCTCI DGAVGCIPLCPQELSLPNLGCNPRLVKVTGQCCEEWV CEDESIKDPMED QDGLLGKELGFDASEVELTRNNELIAVGKGSSLRKLPVFG MEPRILYNPL QGQKCMQTTSSWSQCSKTCGTGISTRVTNDNPECRLVKET RICEVRPCGQ PVYSSLKKGKKCSKTKKSPEPVRFTYAGCLSVKKYRPKY CGSCVDGRCCT PQLTRTVKMRFRCEGETFSKNVMMIQSCKCNYNCPHAN EAAFPFYRLFNDIHKFRD
<b>Predicted molecular weight</b>	55 kDa including tags
<b>Amino acids</b>	25 to 381
<b>Tags</b>	His tag N-Terminus
<b>Additional sequence information</b>	Mature chain lacking the signal peptide. N-terminal 6xHis-SUMO-tagged.

### Specifications

---

Our **Abpromise guarantee** covers the use of **ab235689** in the following tested applications.

The application notes include recommended starting dilutions; optimal dilutions/concentrations should be determined by the end user.

**Applications** SDS-PAGE

**Form** Liquid

## Preparation and Storage

**Stability and Storage** Shipped at 4°C. Store at -20°C or -80°C. Avoid freeze / thaw cycle.

pH: 7.2

Constituents: Tris buffer, 50% Glycerol (glycerin, glycerine)

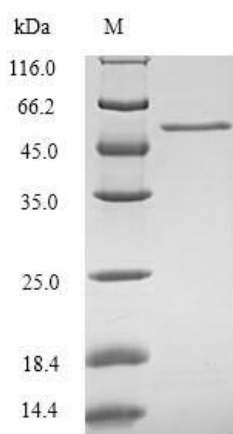
## General Info

**Function** Promotes cell proliferation, chemotaxis, angiogenesis and cell adhesion. Appears to play a role in wound healing by up-regulating, in skin fibroblasts, the expression of a number of genes involved in angiogenesis, inflammation and matrix remodeling including VEGA-A, VEGA-C, MMP1, MMP3, TIMP1, uPA, PAI-1 and integrins alpha-3 and alpha-5. CYR61-mediated gene regulation is dependent on heparin-binding. Down-regulates the expression of alpha-1 and alpha-2 subunits of collagen type-1. Promotes cell adhesion and adhesive signaling through integrin alpha-6/beta-1, cell migration through integrin alpha-v/beta-5 and cell proliferation through integrin alpha-v/beta-3.

**Sequence similarities** Belongs to the CCN family.  
Contains 1 CTCK (C-terminal cystine knot-like) domain.  
Contains 1 IGFBP N-terminal domain.  
Contains 1 TSP type-1 domain.  
Contains 1 VWFC domain.

**Cellular localization** Secreted.

## Images



ab235689 analyzed by (tris-glycine gel) discontinuous SDS-PAGE (reduced) with 5% enrichment gel and 15% separation gel.

SDS-PAGE - Recombinant Human CYR61/CCN1 protein (His tag) (ab235689)

**Please note:** All products are "FOR RESEARCH USE ONLY. NOT FOR USE IN DIAGNOSTIC PROCEDURES"

### **Our Abpromise to you: Quality guaranteed and expert technical support**

---

- Replacement or refund for products not performing as stated on the datasheet
- Valid for 12 months from date of delivery
- Response to your inquiry within 24 hours
  
- We provide support in Chinese, English, French, German, Japanese and Spanish
- Extensive multi-media technical resources to help you
- We investigate all quality concerns to ensure our products perform to the highest standards

If the product does not perform as described on this datasheet, we will offer a refund or replacement. For full details of the Abpromise, please visit <https://www.abcam.com/abpromise> or contact our technical team.

### **Terms and conditions**

---

- Guarantee only valid for products bought direct from Abcam or one of our authorized distributors