

## Product datasheet

# Recombinant human Cystatin C protein ab140738

1 Image

### Description

<b>Product name</b>	Recombinant human Cystatin C protein
<b>Biological activity</b>	The IC50 value is < 2.0 nM. The inhibitory function of Cystatin C on protease activity of papain was measured by a fluorometric assay using Z-FR-AMC at pH 7.5 at 25°C.
<b>Purity</b>	> 95 % SDS-PAGE. ab140738 was purified using conventional chromatography techniques.
<b>Expression system</b>	Escherichia coli
<b>Accession</b>	<b><u>P01034</u></b>
<b>Protein length</b>	Full length protein
<b>Animal free</b>	No
<b>Nature</b>	Recombinant
<b>Species</b>	Human
<b>Sequence</b>	MGSSHHHHHHSSGLVPRGSHMSSPGKPPRLVGGPMDA SVEEEGVRRALDF AVGEYNKASNDMYHSRALQVVRARKQVAGVNYFLDVEL GRTTCTKTQPN LDNCPFHdqPHLKRKAFCsfQIYAVPWQGTMTLSKSTCQ DA
<b>Predicted molecular weight</b>	16 kDa including tags
<b>Amino acids</b>	27 to 146
<b>Tags</b>	His tag N-Terminus

### Specifications

Our **Abpromise guarantee** covers the use of **ab140738** in the following tested applications.

The application notes include recommended starting dilutions; optimal dilutions/concentrations should be determined by the end user.

<b>Applications</b>	SDS-PAGE Mass Spectrometry
<b>Mass spectrometry</b>	MALDI-TOF
<b>Form</b>	Liquid

### Preparation and Storage

## Preparation and Storage

### Stability and Storage

Shipped at 4°C. Store at +4°C short term (1-2 weeks). Upon delivery aliquot. Store at -20°C or -80°C. Avoid freeze / thaw cycle.

pH: 8.00

Constituents: 0.32% Tris HCl, 20% Glycerol (glycerin, glycerine), 0.58% Sodium chloride

This product is an active protein and may elicit a biological response in vivo, handle with caution.

## General Info

### Function

As an inhibitor of cysteine proteinases, this protein is thought to serve an important physiological role as a local regulator of this enzyme activity.

### Tissue specificity

Expressed in submandibular and sublingual saliva but not in parotid saliva (at protein level). Expressed in various body fluids, such as the cerebrospinal fluid and plasma. Expressed in highest levels in the epididymis, vas deferens, brain, thymus, and ovary and the lowest in the submandibular gland.

### Involvement in disease

Amyloidosis 6  
Macular degeneration, age-related, 11

### Sequence similarities

Belongs to the cystatin family.

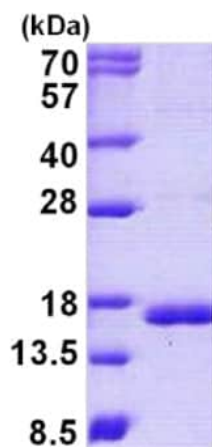
### Post-translational modifications

The Thr-25 variant is O-glycosylated with a core 1 or possibly core 8 glycan. The signal peptide of the O-glycosylated Thr-25 variant is cleaved between Ala-20 and Val-21.

### Cellular localization

Secreted.

## Images



15% SDS-PAGE analysis of ab140738 (3μg).

SDS-PAGE - Recombinant human Cystatin C  
protein (ab140738)

**Please note:** All products are "FOR RESEARCH USE ONLY. NOT FOR USE IN DIAGNOSTIC PROCEDURES"

**Our Promise to you: Quality guaranteed and expert technical support**

- Replacement or refund for products not performing as stated on the datasheet
- Valid for 12 months from date of delivery
- Response to your inquiry within 24 hours
- We provide support in Chinese, English, French, German, Japanese and Spanish
- Extensive multi-media technical resources to help you
- We investigate all quality concerns to ensure our products perform to the highest standards

If the product does not perform as described on this datasheet, we will offer a refund or replacement. For full details of the Abpromise, please visit <https://www.abcam.com/abpromise> or contact our technical team.

#### **Terms and conditions**

---

- Guarantee only valid for products bought direct from Abcam or one of our authorized distributors