

Product datasheet

Recombinant Human Cytokeratin 6a protein ab158802

[1 Image](#)

Description

Product name	Recombinant Human Cytokeratin 6a protein
Expression system	Wheat germ
Protein length	Full length protein
Animal free	No
Nature	Recombinant
Species	Human
Sequence	MASTSTTIRSHSSRRGFSANSARLPGVSRSGFSSVSVS RSRGSGGLGGA CGGAGFGSRSLYGLGGSKRISIGGGSCAISGGYGRAGGS YFGGAGSGF GFGGGAGIGFGLGGGAGLAGGFGGPGFPVCPPGGIQEVT VNQSLLTPLNL QIDPTIQRVRAEEREQIKTLNKNKFAFIDKVRFLQQNKVLE TKWTLLQE QGKTVRQNLEPLFEQYINLRRQLDSIVGERGRLDSELR GMQDLVEDFK NKYEDEINKRTAAENEFVTLKKDVDAAVMNKVELQAKADT LTDEINFLRA LYDAELSQMQTHISDTSVVLSDNRRNLDLDSIAEVKAQY EEIAQRSRA EAESWYQTKYEELQVTAGRHGDDL RNTKQIEINRMIQRL RSEIDHVKK QCANLQAAIADAEQRGEMALKDAKNKLEGLDALQKAKQ DLARLLKEYQE LMNVKLALDVEIATYRKLLGEECRLNGEGVGQVNISVVQ STVSSGYGGA SGVGSGLGLGGSSYSYGSGLVGGGFSSSSGRAIGGGL SSVGGGSSTIK YTTTSSSSSRKSYKH
Amino acids	1 to 564
Tags	GST tag N-Terminus

Specifications

Our **Abpromise guarantee** covers the use of **ab158802** in the following tested applications.

The application notes include recommended starting dilutions; optimal dilutions/concentrations should be determined by the end user.

Applications Western blot

ELISA

Form Liquid

Additional notes

Preparation and Storage

Stability and Storage Shipped on dry ice. Upon delivery aliquot and store at -80°C. Avoid freeze / thaw cycles.

pH: 8.00

Constituents: 0.31% Glutathione, 0.79% Tris HCl

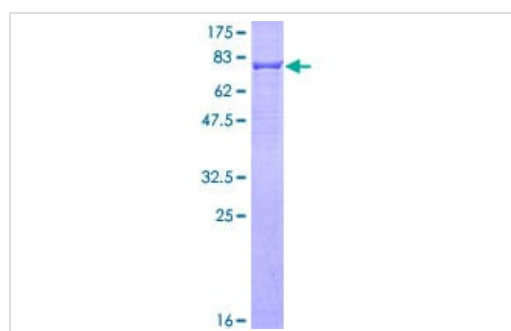
General Info

Tissue specificity Constitutively expressed in distinct types of epithelia such as those in oral mucosa, esophagus, papillae of tongue and hair follicle outer root sheath.

Involvement in disease Defects in KRT6A are a cause of pachyonychia congenita type 1 (PC1) [MIM:167200]; also known as Jadassohn-Lewandowsky syndrome. PC1 is an autosomal dominant ectodermal dysplasia characterized by hypertrophic nail dystrophy resulting in onychogryposis (thickening and increase in curvature of the nail), palmoplantar keratoderma, follicular hyperkeratosis, and oral leukokeratosis. Hyperhidrosis of the hands and feet is usually present.

Sequence similarities Belongs to the intermediate filament family.

Images



ab158802 on a 12.5% SDS-PAGE stained with Coomassie Blue.

SDS-PAGE - Recombinant Human Cytokeratin 6a protein (ab158802)

Please note: All products are "FOR RESEARCH USE ONLY. NOT FOR USE IN DIAGNOSTIC PROCEDURES"

Our Abpromise to you: Quality guaranteed and expert technical support

- Replacement or refund for products not performing as stated on the datasheet
- Valid for 12 months from date of delivery
- Response to your inquiry within 24 hours

- We provide support in Chinese, English, French, German, Japanese and Spanish
- Extensive multi-media technical resources to help you
- We investigate all quality concerns to ensure our products perform to the highest standards

If the product does not perform as described on this datasheet, we will offer a refund or replacement. For full details of the Abpromise, please visit <https://www.abcam.com/abpromise> or contact our technical team.

Terms and conditions

- Guarantee only valid for products bought direct from Abcam or one of our authorized distributors