

Recombinant human DCLK2 protein ab85758

4 Images

Description

Product name	Recombinant human DCLK2 protein
Biological activity	The Specific activity of ab85758 was determined to be 94 nmol/min/mg.
Purity	> 80 % Densitometry. Affinity purified.
Expression system	Baculovirus infected Sf9 cells
Protein length	Protein fragment
Animal free	No
Nature	Recombinant
Species	Human
Amino acids	1 to 690

Specifications

Our **Abpromise guarantee** covers the use of **ab85758** in the following tested applications.

The application notes include recommended starting dilutions; optimal dilutions/concentrations should be determined by the end user.

Applications	Western blot Functional Studies SDS-PAGE
Form	Liquid
Additional notes	<u>ab204861</u> (Hsp27 peptide) can be utilized as a substrate for assessing kinase activity Previously labelled as DCAMKL2.

Preparation and Storage

Stability and Storage	Shipped on dry ice. Upon delivery aliquot and store at -80°C. Avoid freeze / thaw cycles. pH: 7.50 Constituents: 0.0038% EGTA, 0.00174% PMSF, 0.00385% DTT, 0.79% Tris HCl, 0.00292% EDTA, 25% Glycerol (glycerin, glycerine), 0.87% Sodium chloride This product is an active protein and may elicit a biological response in vivo, handle with caution.
------------------------------	--

General Info

Function

Protein kinase with a significantly reduced Ca^{2+} /CAM affinity and dependence compared to other members of the CaMK family. May play a role in the down-regulation of CRE-dependent gene activation probably by phosphorylation of the CREB coactivator CRTC2/TORC2 and the resulting retention of TORC2 in the cytoplasm.

Sequence similarities

Belongs to the protein kinase superfamily. CAMK Ser/Thr protein kinase family. CaMK subfamily. Contains 2 doublecortin domains.
Contains 1 protein kinase domain.

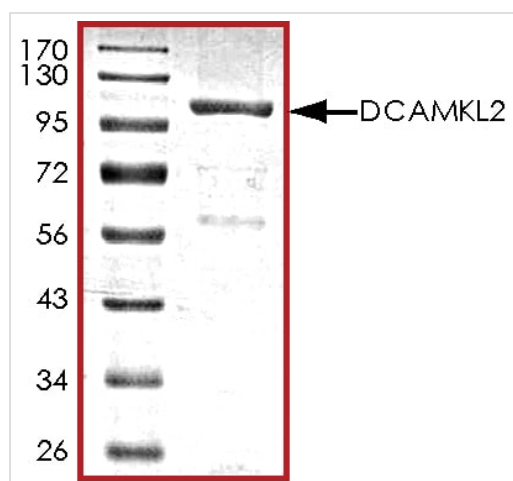
Domain

The doublecortin domains are involved in the colocalization with microtubules.

Cellular localization

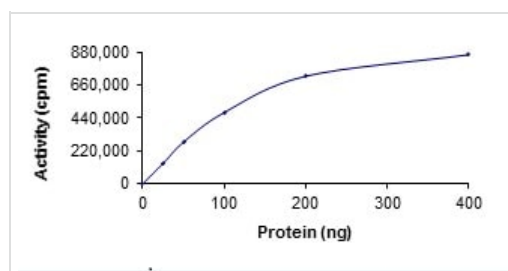
Cytoplasm > cytoskeleton. Colocalizes with microtubules.

Images



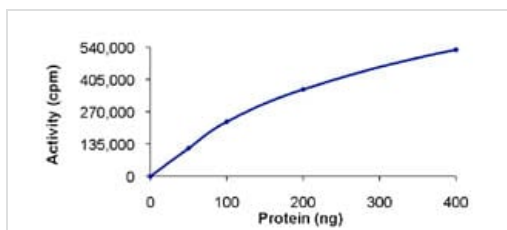
SDS PAGE analysis of ab85758

SDS-PAGE - Recombinant human DCLK2 protein
(ab85758)



The specific activity of DCLK2 (ab85758) was determined to be 105 nmol /min/mg as per activity assay protocol.

Functional Studies - Recombinant human DCLK2
protein (ab85758)



The Specific activity of ab85758 was determined to be 94 nmol/min/mg.

Functional Studies - Recombinant human DCLK2 protein (ab85758)



SDS-PAGE showing ab85758 at approximately 105kDa.

SDS-PAGE - Recombinant human DCLK2 protein (ab85758)

Please note: All products are "FOR RESEARCH USE ONLY. NOT FOR USE IN DIAGNOSTIC PROCEDURES"

Our Abpromise to you: Quality guaranteed and expert technical support

- Replacement or refund for products not performing as stated on the datasheet
- Valid for 12 months from date of delivery
- Response to your inquiry within 24 hours
- We provide support in Chinese, English, French, German, Japanese and Spanish
- Extensive multi-media technical resources to help you
- We investigate all quality concerns to ensure our products perform to the highest standards

If the product does not perform as described on this datasheet, we will offer a refund or replacement. For full details of the Abpromise, please visit <https://www.abcam.com/abpromise> or contact our technical team.

Terms and conditions

- Guarantee only valid for products bought direct from Abcam or one of our authorized distributors