

Recombinant human DcR2 protein (Active) ab227391

1 Image

Description

Product name	Recombinant human DcR2 protein (Active)		
Biological activity	Measured in a neutralizing assay using Jurkat human T lymphocyte. The ED ₅₀ for this effect is less or equal to 10 ng/ml in the presence of 2ng/ml TRAIL.		
Purity	> 90 % SDS-PAGE. Affinity purified		
Endotoxin level	< 1.000 Eu/µg		
Expression system	Baculovirus infected insect cells		
Accession	<u>Q9UBN6</u>		
Protein length	Protein fragment		
Animal free	No		
Nature	Recombinant		
Species	Human		
Sequence	ATIPRQDEVPPQTVAPQQQRRSLKEEECPAGSHRSEYTG ACNPCTEGVDY TIASNNLPSCLLCTVCKSGQTNKSSCTTTRDTVQCCEKGS FQDKNSPEMC RTCRTGCPRGMVKVSNCNTPRSDIKCKNESAASSTGKTPA AEETVTILGM LASPYHVEPKSCDKTHTCPPCPAPELLGGPSVFLFPPKP KDTLMISRTPE VTCVVVDVSHEDPEVKFNWYVDGVEVHNAKTKPREEQY NSTYRVVSVLTV LHQDWLNGKEYKCKVSNKALPAPIEKTISKAKGQPREPQV YTLPPSRDEL TKNQVSLTCLVKGFYPSDIAVEWESNGQPENNYKTTTPVL DSDGSFFLYS KLTVDKSRWQQGNVFSCSVMHEALHNHYTQKSLSLSPG KHHHHHH		
Predicted molecular weight	44 kDa including tags		
Amino acids	56 to 211		
Tags	His tag C-Terminus		
Additional sequence information	Extracellular domain fused to hlgG-His-tag at C-terminus (NP_003831).		

Specifications

Our **Abpromise guarantee** covers the use of **ab227391** in the following tested applications.

The application notes include recommended starting dilutions; optimal dilutions/concentrations should be determined by the end user.

Applications	Functional Studies
	SDS-PAGE
Form	Liquid

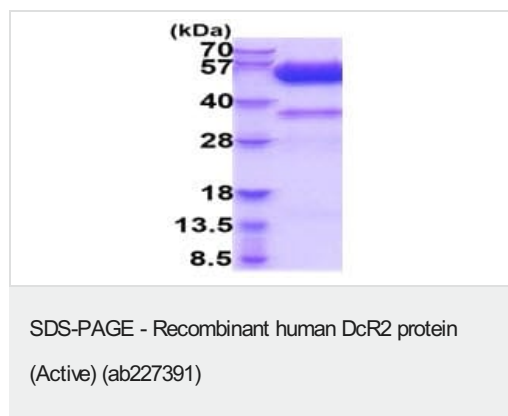
Preparation and Storage

Stability and Storage	Shipped at 4°C. Store at +4°C short term (1-2 weeks). Upon delivery aliquot. Store at -20°C or -80°C. Avoid freeze / thaw cycle.
	pH: 7.40
	Constituents: 10% Glycerol (glycerin, glycerine), PBS
	This product is an active protein and may elicit a biological response in vivo, handle with caution.

General Info

Function	Receptor for the cytotoxic ligand TRAIL. Contains a truncated death domain and hence is not capable of inducing apoptosis but protects against TRAIL-mediated apoptosis. Reports are contradictory with regards to its ability to induce the NF-kappa-B pathway. According to PubMed:9382840, it cannot but according to PubMed:9430226, it can induce the NF-kappa-B pathway.
Tissue specificity	Widely expressed, in particular in fetal kidney, lung and liver, and in adult testis and liver. Also expressed in peripheral blood leukocytes, colon and small intestine, ovary, prostate, thymus, spleen, pancreas, kidney, lung, placenta and heart.
Sequence similarities	Contains 1 death domain. Contains 3 TNFR-Cys repeats.
Cellular localization	Membrane.

Images



15% SDS-PAGE analysis of 3 µg ab227391.

MW: 40-57 kDa (SDS-PAGE under reducing conditions).

Please note: All products are "FOR RESEARCH USE ONLY. NOT FOR USE IN DIAGNOSTIC PROCEDURES"

Our Abpromise to you: Quality guaranteed and expert technical support

- Replacement or refund for products not performing as stated on the datasheet
- Valid for 12 months from date of delivery
- Response to your inquiry within 24 hours

- We provide support in Chinese, English, French, German, Japanese and Spanish
- Extensive multi-media technical resources to help you
- We investigate all quality concerns to ensure our products perform to the highest standards

If the product does not perform as described on this datasheet, we will offer a refund or replacement. For full details of the Abpromise, please visit <https://www.abcam.com/abpromise> or contact our technical team.

Terms and conditions

- Guarantee only valid for products bought direct from Abcam or one of our authorized distributors