

Product datasheet

Recombinant Human delta Sarcoglycan protein (denatured) ab140566

1 Image

Description	
Product name	Recombinant Human delta Sarcoglycan protein (denatured)
Purity	> 85 % SDS-PAGE.
Expression system	Escherichia coli
Accession	<u>Q92629</u>
Protein length	Protein fragment
Animal free	No
Nature	Recombinant
Species	Human
Sequence	MGSSHHHHHH SSGLVPRGSH RSHMKVMNFT IDGMGNLRIT EKGLKLEGDS EFLQPLYAKE IQSRPGNALY FKSARNVTVN ILNDQTKVLT QLITGPKAVE AYGKKFEVKT VSGKLLFSAD NNEVVVGAER LRVLGAEGTV FPKSIETPNV RADPFKELRL ESPTRSLVME APKGVEINAE AGNMEATCRT ELRLESKDGE IKLDAAKIRL PRLPHGSYTP TGTRQKVFEI CVCANGRLFL SQAGAGSTCQ INTSVCL
Predicted molecular weight	28 kDa including tags
Amino acids	57 to 289
Tags	His tag N-Terminus
Description	Recombinant Human delta Sarcoglycan protein

Specifications	
Our Abpromise guarantee covers the use of ab140566 in the following tested applications.	
The application notes include recommended starting dilutions; optimal dilutions/concentrations should be determined by the end user.	
Applications	SDS-PAGE
Form	Liquid

Preparation and Storage

Preparation and Storage

Stability and Storage

Shipped at 4°C. Store at +4°C short term (1-2 weeks). Upon delivery aliquot. Store at -20°C or -80°C. Avoid freeze / thaw cycle.

pH: 8.00

Constituents: 2.4% Urea, 0.32% Tris HCl, 10% Glycerol (glycerin, glycerine)

General Info

Function

Component of the sarcoglycan complex, a subcomplex of the dystrophin-glycoprotein complex which forms a link between the F-actin cytoskeleton and the extracellular matrix.

Tissue specificity

Most strongly expressed in skeletal and cardiac muscle. Also detected in smooth muscle. Weak expression in brain and lung.

Involvement in disease

Defects in SGCD are the cause of limb-girdle muscular dystrophy type 2F (LGMD2F) [MIM:601287]. LGMD2F is an autosomal recessive disorder.

Defects in SGCD are the cause of cardiomyopathy dilated type 1L (CMD1L) [MIM:606685]. Dilated cardiomyopathy is a disorder characterized by ventricular dilation and impaired systolic function, resulting in congestive heart failure and arrhythmia. Patients are at risk of premature death.

Sequence similarities

Belongs to the sarcoglycan beta/delta/gamma/zeta family.

Post-translational modifications

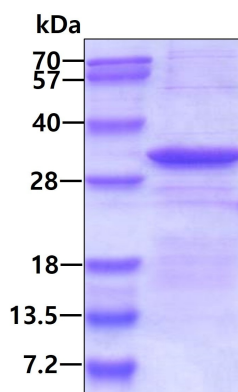
Glycosylated.

Disulfide bonds are present.

Cellular localization

Cell membrane > sarcolemma. Cytoplasm > cytoskeleton.

Images



SDS-PAGE of ab140566 (3µg) under reducing condition and visualized by coomassie blue stain.

SDS-PAGE - Recombinant Human delta
Sarcoglycan protein (denatured) (ab140566)

Please note: All products are "FOR RESEARCH USE ONLY. NOT FOR USE IN DIAGNOSTIC PROCEDURES"

Our Abpromise to you: Quality guaranteed and expert technical support

- Replacement or refund for products not performing as stated on the datasheet
- Valid for 12 months from date of delivery
- Response to your inquiry within 24 hours

- We provide support in Chinese, English, French, German, Japanese and Spanish
- Extensive multi-media technical resources to help you
- We investigate all quality concerns to ensure our products perform to the highest standards

If the product does not perform as described on this datasheet, we will offer a refund or replacement. For full details of the Abpromise, please visit <https://www.abcam.com/abpromise> or contact our technical team.

Terms and conditions

- Guarantee only valid for products bought direct from Abcam or one of our authorized distributors