

Recombinant Human Desmoglein 1/DSG1 protein  
ab114443

1 Image

Description

Product name	Recombinant Human Desmoglein 1/DSG1 protein
Expression system	Wheat germ
Accession	<u>Q02413</u>
Protein length	Full length protein
Animal free	No
Nature	Recombinant
Species	Human
Sequence	MDWSFFRVVAMLFIFLVVVEVNSEFRIQVRDYNTKNGTIK WHSIRRQKRE WIKFAAACREGEDNSKRNPiAKIHSDCAANQQVTYRISGV GIDQPPYGIF VINQKTGEINITSVDREVTFFIYCRALNSMGQDLERPLEL RVRVLDI NDNPPVFSMATFAGQIEENSANNTLVMLNATDADEPNL NSKIAFKIIR QEPSDSPMFIINRNTGEIRTMNFLDREQYGGYALAVRGS DRDGGADGMS AECECNiKILDVNDNIPYMEQSSYTIEIQENTLNSNLLEIRVID LDEEFS ANWMAVIFFISGNEGNWFEIEMNERTNVGILKVVKPLDYEA MQSLQLSIG VRNKAEFHHSIMSQYKLKASAIsvTVLNVIEGPVFRPGSKT YVVTGNMGS NDKVGDfVATDLDTGRPSTTVRYVMGNNPADLLAVDSRT GKLTLKNKVTk EQYNMLGGKYQGTLSiDDNLQRTCTGTINiIQSFGNDDRt NTEPNtKi TTNTGRQESTSSTNYDTSTTSTDSSQVYSSEPGNGAKDLL SDNVHFGPAG IGLLiMGFLVLGLVPFLMiCCDCGGAPRSAAGFEPVPECS DGAiHswAVE GPQPEPRDITTViPQiPPDNANiIECIDNSGVYTNEYGGREM QDLGGGER

MTGFELTEGVKTSGMPEICQEYSGTLRRNSMRECREGGL  
 NMNFMESYFCQ  
 KAYAYADEDEGRPSNDCLLYDIEGVGSPAGSVGCCSFIG  
 EDLDDSFOLDT  
 LGPKFKKLADISLGKESYPDLDPSPWPQSTEPVCLPQET  
 EPVVSGHPPIS  
 PHFGTTTVESESTYPSGPGVLHPKPILDPLGYGNVTVTESYT  
 TSDTLKPS  
 VHVHDNRPASNVVVTERVVGPISGADLHGMLEMPDLRDG  
 SNV/TERVIA  
 PSSSLPTSLTIHHPRESSNVVVTERVIQPTSGMIGSLSMHP  
 ELANAHNVI  
 VTERVVSGAGVTGISGTTGISGGIGSSGLVGTSMGAGSGA  
 LSGAGISGGG  
 IGLSSLGGTASIGHMRSSSDHHFNQTIGSASPSTARSRTKY  
 STVQYSK

<b>Predicted molecular weight</b>	142 kDa including tags
<b>Amino acids</b>	1 to 1049

## Specifications

Our **Abpromise guarantee** covers the use of **ab114443** in the following tested applications.

The application notes include recommended starting dilutions; optimal dilutions/concentrations should be determined by the end user.

<b>Applications</b>	ELISA
	SDS-PAGE
	Western blot
<b>Form</b>	Liquid
<b>Additional notes</b>	This product was previously labelled as Desmoglein 1.

## Preparation and Storage

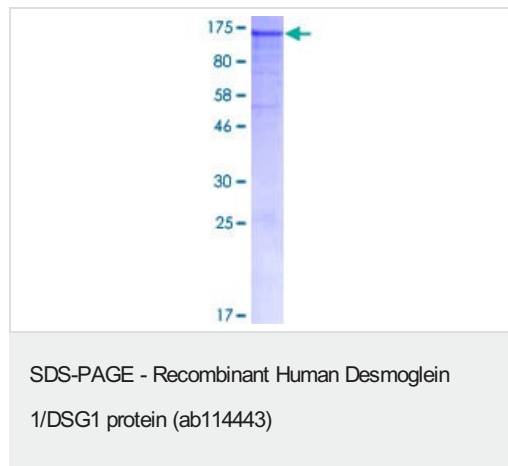
<b>Stability and Storage</b>	Shipped on dry ice. Upon delivery aliquot and store at -80°C. Avoid freeze / thaw cycles.
	pH: 8.00
	Constituents: 0.3% Glutathione, 0.79% Tris HCl

## General Info

<b>Function</b>	Component of intercellular desmosome junctions. Involved in the interaction of plaque proteins and intermediate filaments mediating cell-cell adhesion.
<b>Tissue specificity</b>	Epidermis, tongue, tonsil and esophagus.
<b>Involvement in disease</b>	Defects in DSG1 are the cause of palmoplantar keratoderma striate type 1 (SPPK1) [MIM:148700]; also known as keratosis palmoplantaris striata I. SPPK1 is a dermatological disorder characterized by thickening of the skin on the palms and soles, and longitudinal hyperkeratotic lesions on the palms, running the length of each finger.

<b>Sequence similarities</b>	Contains 4 cadherin domains.
<b>Domain</b>	Calcium may be bound by the cadherin-like repeats.
<b>Cellular localization</b>	Cell membrane. Cell junction > desmosome.

## Images



ab114443 analysed on a 12.5% SDS-PAGE gel stained with Coomassie Blue.

**Please note:** All products are "FOR RESEARCH USE ONLY. NOT FOR USE IN DIAGNOSTIC PROCEDURES"

## Our Abpromise to you: Quality guaranteed and expert technical support

- Replacement or refund for products not performing as stated on the datasheet
- Valid for 12 months from date of delivery
- Response to your inquiry within 24 hours
- We provide support in Chinese, English, French, German, Japanese and Spanish
- Extensive multi-media technical resources to help you
- We investigate all quality concerns to ensure our products perform to the highest standards

If the product does not perform as described on this datasheet, we will offer a refund or replacement. For full details of the Abpromise, please visit <https://www.abcam.com/abpromise> or contact our technical team.

## Terms and conditions

- Guarantee only valid for products bought direct from Abcam or one of our authorized distributors