

Product datasheet

Recombinant Human DGCR6 protein ab140578

1 Image

Description

Product name	Recombinant Human DGCR6 protein
Purity	> 95 % SDS-PAGE. ab140578 is purified using conventional chromatography techniques.
Expression system	Escherichia coli
Accession	<u>Q14129</u>
Protein length	Full length protein
Animal free	No
Nature	Recombinant
Species	Human
Sequence	<p>MGSSHHHHHH SSGLVPRGSH MGSMERYAGA LEEVADGARQ QERHYQLLSA LQSLVKELPS SFQQRLSYTT LSDLALALLD GTVFEMQGL LEIQHLTEKS LYNQRLRLQN EHRVLRQALR QKHQEAQQAC RPHNLPVLQA AQQRELEAVE HRIREEQRAM DQKIVLELDR KVADQQSTLE KAGVAGFYVT TNPQELMLQM NLELIRKLQ QRGCWAGKAA LGLGGPWQLP AAQCDQKGSP VPP</p>
Predicted molecular weight	27 kDa including tags
Amino acids	1 to 220
Tags	His tag N-Terminus

Specifications

Our **Abpromise guarantee** covers the use of **ab140578** in the following tested applications.

The application notes include recommended starting dilutions; optimal dilutions/concentrations should be determined by the end user.

Applications	SDS-PAGE Mass Spectrometry
Mass spectrometry	MALDI-TOF
Form	Liquid

Preparation and Storage

Stability and Storage

Shipped at 4°C. Store at +4°C short term (1-2 weeks). Upon delivery aliquot. Store at -20°C or -80°C. Avoid freeze / thaw cycle.

pH: 8.00

Constituents: 0.32% Tris HCl, 20% Glycerol (glycerin, glycerine), 1.17% Sodium chloride

General Info**Function**

May play a role in neural crest cell migration into the third and fourth pharyngeal pouches.

Tissue specificity

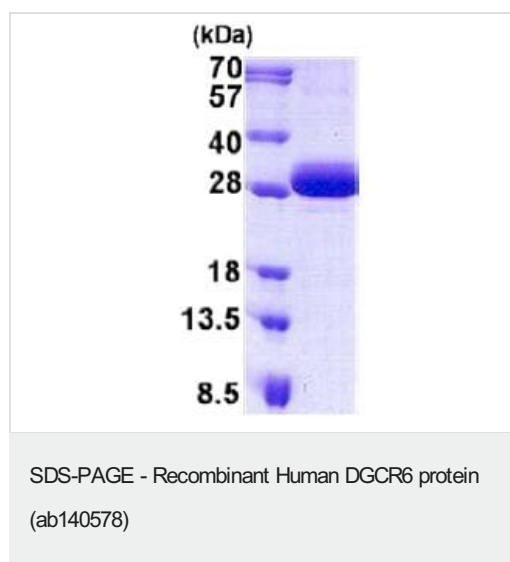
Found in all tissues examined with highest expression in liver, heart and skeletal muscle. Lower levels in pancreas and placenta. Weak expression in brain.

Sequence similarities

Belongs to the gonadal family.

Cellular localization

Nucleus. Predominantly nuclear.

Images

15% SDS PAGE analysis of ab140578 (3 µg).

Please note: All products are "FOR RESEARCH USE ONLY. NOT FOR USE IN DIAGNOSTIC PROCEDURES"

Our Abpromise to you: Quality guaranteed and expert technical support

- Replacement or refund for products not performing as stated on the datasheet
- Valid for 12 months from date of delivery
- Response to your inquiry within 24 hours
- We provide support in Chinese, English, French, German, Japanese and Spanish
- Extensive multi-media technical resources to help you
- We investigate all quality concerns to ensure our products perform to the highest standards

If the product does not perform as described on this datasheet, we will offer a refund or replacement. For full details of the Abpromise, please visit <https://www.abcam.com/abpromise> or contact our technical team.

Terms and conditions

- Guarantee only valid for products bought direct from Abcam or one of our authorized distributors