

Product datasheet

Recombinant Human Dishevelled / Dvl1 protein ab116823

[1 Image](#)

Description

Product name	Recombinant Human Dishevelled / Dvl1 protein		
Expression system	Wheat germ		
Accession	<u>O14640</u>		
Protein length	Protein fragment		
Animal free	No		
Nature	Recombinant		
Species	Human		
Sequence	MAETKIYHMDEEETPYLVKLPVAPERVTLADFKNVLSNRP VHAYKFFFK SMDQDFGVVKEEIFDDNAKLPCFNGRVVSWLVAEGAH SDAGSQGTDST DLPPPLERTG		
Predicted molecular weight	38 kDa including tags		
Amino acids	1 to 110		

Specifications

Our **Abpromise guarantee** covers the use of **ab116823** in the following tested applications.

The application notes include recommended starting dilutions; optimal dilutions/concentrations should be determined by the end user.

Applications	ELISA
	SDS-PAGE
	Western blot
Form	Liquid

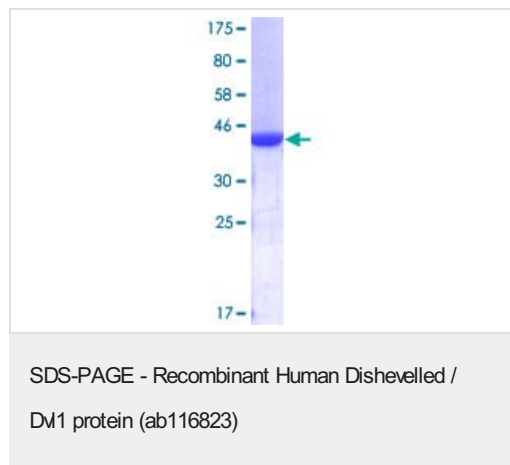
Preparation and Storage

Stability and Storage	Shipped on dry ice. Upon delivery aliquot and store at -80°C. Avoid freeze / thaw cycles.
	pH: 8.00
	Constituents: 0.3% Glutathione, 0.79% Tris HCl

General Info

Function	Participates in Wnt signaling by binding to the cytoplasmic C-terminus of frizzled family members and transducing the Wnt signal to down-stream effectors. Plays a role both in canonical and non-canonical Wnt signaling. Plays a role in the signal transduction pathways mediated by multiple Wnt genes. Required for LEF1 activation upon WNT1 and WNT3A signaling. DVL1 and PAK1 form a ternary complex with MUSK which is important for MUSK-dependent regulation of AChR clustering during the formation of the neuromuscular junction (NMJ).
Involvement in disease	Robinow syndrome, autosomal dominant 2
Sequence similarities	Belongs to the DSH family. Contains 1 DEP domain. Contains 1 DIX domain. Contains 1 PDZ (DHR) domain.
Domain	The DIX domain promotes homooligomerization. The DEP domain mediates interaction with the cell membrane.
Post-translational modifications	Ubiquitinated; undergoes both 'Lys-48'-linked ubiquitination, leading to its subsequent degradation by the ubiquitin-proteasome pathway, and 'Lys-63'-linked ubiquitination. The interaction with INVS is required for ubiquitination. Deubiquitinated by CYLD, which acts on 'Lys-63'-linked ubiquitin chains.
Cellular localization	Cell membrane. Cytoplasm, cytosol. Cytoplasmic vesicle. Localizes at the cell membrane upon interaction with frizzled family members.

Images



12.5% SDS-PAGE stained with Coomassie Blue showing ab116823

Please note: All products are "FOR RESEARCH USE ONLY. NOT FOR USE IN DIAGNOSTIC PROCEDURES"

Our Abpromise to you: Quality guaranteed and expert technical support

- Replacement or refund for products not performing as stated on the datasheet
- Valid for 12 months from date of delivery
- Response to your inquiry within 24 hours
- We provide support in Chinese, English, French, German, Japanese and Spanish
- Extensive multi-media technical resources to help you

- We investigate all quality concerns to ensure our products perform to the highest standards

If the product does not perform as described on this datasheet, we will offer a refund or replacement. For full details of the Abpromise, please visit <https://www.abcam.com/abpromise> or contact our technical team.

Terms and conditions

- Guarantee only valid for products bought direct from Abcam or one of our authorized distributors