

Product datasheet

Recombinant Human DNA Polymerase lambda protein ab113399

1 Image

Description

Product name	Recombinant Human DNA Polymerase lambda protein	
Purity	> 90 % SDS-PAGE. Conventional chromatography techniques (anion exchange followed by gel filtration with 20mM Tris pH 7.5, 2mM EDTA).	
Expression system	Escherichia coli	
Accession	<u>Q9UGP5-2</u>	
Protein length	Full length protein	
Animal free	No	
Nature	Recombinant	
Species	Human	
Sequence	MGSSHHHHHHSSGLVPRGSHMLMHHQKYLQRFLGGKRE KKQKEACSIPGI GKRMAEKIIEILESGHLRKL DHISESVPVLELFSNIWGAGTK TAQMWYQQ GFRSLEDIRSQASLTTQQAIGLKHYSDFLERMPREEATEIE QTVQKAAQA FNSGLLCVACGSYRRGKATCGDVDVLITHPDGRSHRGIFS RLLDSLREQEG FLTDDLVSQEENGQQQKYLGVCRLPGPGRRHRRLDIIVP YSEFACALLY FTGSAHFNRSMRALAKTKGMSLSEHALSTAVVRNTHGCK VGPGRVLPPTPT EKDVFRLLGLPYREPAERDW	
Predicted molecular weight	36 kDa	
Amino acids	1 to 300	
Tags	His tag N-Terminus	
Additional sequence information	The protein sequence refers to isoform 2 and contains MGSSHHHHHHSSGLVPRGSH sequence at N-Terminus for the His tag.	
Description	Recombinant Human DNA Polymerase lambda/Polk protein	

Specifications

Our **Abpromise guarantee** covers the use of **ab113399** in the following tested applications.

The application notes include recommended starting dilutions; optimal dilutions/concentrations should be determined by the end user.

Applications Mass Spectrometry

SDS-PAGE

Mass spectrometry MALDI-TOF

Form Liquid

Additional notes

Preparation and Storage

Stability and Storage Shipped at 4°C. Store at +4°C short term (1-2 weeks). Upon delivery aliquot. Store at -20°C or -80°C. Avoid freeze / thaw cycle.

pH: 8.00

Constituents: 0.02% DTT, 0.32% Tris HCl, 30% Glycerol (glycerin, glycerine), 0.58% Sodium chloride

General Info

Function Repair polymerase. Involved in base excision repair (BER) responsible for repair of lesions that give rise to abasic (AP) sites in DNA. Has both DNA polymerase and terminal transferase activities. Has a 5'-deoxyribose-5-phosphate lyase (dRP lyase) activity.

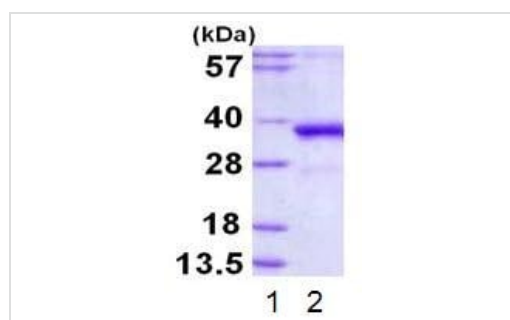
Tissue specificity Expressed in a number of tissues. Abundant in testis.

Sequence similarities Belongs to the DNA polymerase type-X family.
Contains 1 BRCT domain.

Post-translational modifications Phosphorylated upon DNA damage, probably by ATM or ATR.

Cellular localization Nucleus.

Images



15% SDS-PAGE of DNA Polymerase lambda protein: (1) MW ladder, (2) protein loaded 3ug

SDS-PAGE - Recombinant Human DNA
Polymerase lambda protein (ab113399)

Please note: All products are "FOR RESEARCH USE ONLY. NOT FOR USE IN DIAGNOSTIC PROCEDURES"

Our Abpromise to you: Quality guaranteed and expert technical support

- Replacement or refund for products not performing as stated on the datasheet
- Valid for 12 months from date of delivery
- Response to your inquiry within 24 hours

- We provide support in Chinese, English, French, German, Japanese and Spanish
- Extensive multi-media technical resources to help you
- We investigate all quality concerns to ensure our products perform to the highest standards

If the product does not perform as described on this datasheet, we will offer a refund or replacement. For full details of the Abpromise, please visit <https://www.abcam.com/abpromise> or contact our technical team.

Terms and conditions

- Guarantee only valid for products bought direct from Abcam or one of our authorized distributors