

## Product datasheet

# Recombinant Human DOC2A protein ab160033

[1 Image](#)

### Description

---

<b>Product name</b>	Recombinant Human DOC2A protein
<b>Expression system</b>	Wheat germ
<b>Protein length</b>	Full length protein
<b>Animal free</b>	No
<b>Nature</b>	Recombinant
<b>Species</b>	Human
<b>Sequence</b>	MRGRRGDRMTINIQEHMAINVCPGPIRPIRQISDYFPRGPGP EGGGGSGG EAPAHLVPLALAPPAALLGATTPEDGAEVDSYDSDDATA LGTLEFDLLYD RASCTLHCSILRAKGLKPMDFENGLADPYVKLHLLPGACKA NKLKTKTQRN TLNPVWNEDLTYSGITDDDITHKVLRIAVCDEDKLSHNEFIG EIRVPLRR LKPSQKKHFNICLERQVPLASPSSMSAALRGISCYLKELE QAEQQQLLE ERGRILLSLSYSSRRRGLLVGILRCAHLAAMDVNGYSDPYV KTYLRPDVD KKSKHKTCVKKKTLNPEFNEEFFYEIELSTLATKTLEVTWV DYDIGKSND FIGGVSLGPGARGEARKHWSDCCLQQPDAALERWHTLTS ELPPAAGALSSA
<b>Amino acids</b>	1 to 400
<b>Tags</b>	GST tag N-Terminus

### Specifications

---

Our **Abpromise guarantee** covers the use of **ab160033** in the following tested applications.

The application notes include recommended starting dilutions; optimal dilutions/concentrations should be determined by the end user.

<b>Applications</b>	ELISA Western blot
<b>Form</b>	Liquid

## Additional notes

## Preparation and Storage

### Stability and Storage

Shipped on dry ice. Upon delivery aliquot and store at -80°C. Avoid freeze / thaw cycles.

pH: 8.00

Constituents: 0.31% Glutathione, 0.79% Tris HCl

## General Info

### Function

Calcium sensor which most probably regulates fusion of vesicles with membranes. Binds calcium and phospholipids. May be involved in calcium dependent neurotransmitter release through the interaction with UNC13A. May be involved in calcium-dependent spontaneous release of neurotransmitter in absence of action potentials in neuronal cells. Regulates Ca<sup>2+</sup>-dependent secretory lysosome exocytosis in mast cells.

### Tissue specificity

Predominantly expressed in brain. Also expressed in testis.

### Sequence similarities

Contains 2 C2 domains.

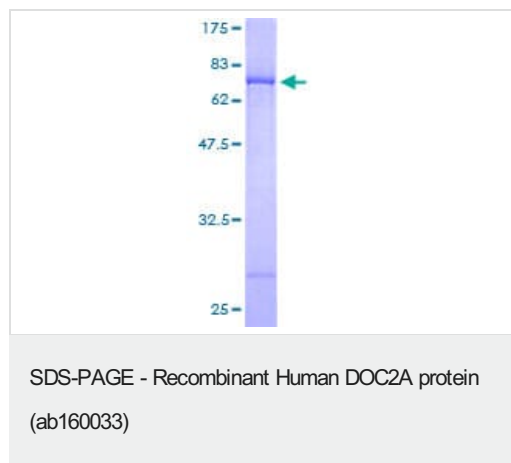
### Domain

C2 domain 1 is involved in binding calcium and phospholipids.

### Cellular localization

Lysosome. Cytoplasmic vesicle > secretory vesicle > synaptic vesicle membrane. Cell junction > synapse > synaptosome. Colocalizes to synaptic vesicles.

## Images



ab160033 on a 12.5% SDS-PAGE stained with Coomassie Blue.

**Please note:** All products are "FOR RESEARCH USE ONLY. NOT FOR USE IN DIAGNOSTIC PROCEDURES"

## Our Abpromise to you: Quality guaranteed and expert technical support

- Replacement or refund for products not performing as stated on the datasheet
- Valid for 12 months from date of delivery
- Response to your inquiry within 24 hours

- We provide support in Chinese, English, French, German, Japanese and Spanish
- Extensive multi-media technical resources to help you
- We investigate all quality concerns to ensure our products perform to the highest standards

If the product does not perform as described on this datasheet, we will offer a refund or replacement. For full details of the Abpromise, please visit <https://www.abcam.com/abpromise> or contact our technical team.

### **Terms and conditions**

---

- Guarantee only valid for products bought direct from Abcam or one of our authorized distributors