

# Recombinant Human Dopamine beta Hydroxylase protein ab202616

1 Image

Description

Product name	Recombinant Human Dopamine beta Hydroxylase protein		
Purity	> 85 % SDS-PAGE. ab202616 was purified by using conventional chromatography techniques.		
Expression system	Escherichia coli		
Accession	<u>P09172</u>		
Protein length	Protein fragment		
Animal free	No		
Nature	Recombinant		
Species	Human		
Sequence	MGSSHHHHHHSSGLVPRGSHMSAPRESPLPYHIPLDPEG SLELSWNVSYT QEAHFQLLVRRLLKAGVLFGMSDRGELENADLVVLWTDG DTAYFADAWSD QKGQIHLDPPQQDYQLLQVQRTPEGLTLLFKRPFGTCDPKD YLIEDGTVHL VYGILEEPFRSLEAINGSGLQMGLQRVQLLKPNIPPELPS DACTMEVQA PNIQIPSQETTYWCYIKELPKGFSRHIIKYEPVTKGNEALV HHMEVFQ CAPEMDSVPHFSGPCDSKMKPDRLNYCRHVLAAWALGA KAFYYPEEAGLA FGGPGSSRYLRLEVHYHNPLVIEGRNDSSGIRLYYTAKLRR FNAGIMELG LVYTPVMAIPPRETAFILTYCTDKCTQLALPPSGIHIFASQL HTHLTGR KVVTVLVRDGREWEIVNQDNHYSHPHFQEIRMLKKVSVH PGDVLITSCTY NTEDRELATVGGFGILEEMCVNVWHYYPQTQLELCKSAVD AGFLQKYFHL INRFNNEDEVCTCPQASVSQQFTSVPWNSFNRDVLKALYS FAPISMHCNKS SAVRFQGEWNLQPLPKVISTLEETPQCPTSQGRSPAGP TVVSIGGGKG		

<b>Predicted molecular weight</b>	67 kDa including tags
<b>Amino acids</b>	40 to 617
<b>Tags</b>	His tag N-Terminus
<b>Additional sequence information</b>	NP_000778. Soluble Dopamine beta Hydroxylase.

## Specifications

---

Our **Abpromise guarantee** covers the use of **ab202616** in the following tested applications.

The application notes include recommended starting dilutions; optimal dilutions/concentrations should be determined by the end user.

**Applications** SDS-PAGE

**Form** Liquid

## Preparation and Storage

---

**Stability and Storage** Shipped at 4°C. Store at +4°C short term (1-2 weeks). Upon delivery aliquot. Store at -20°C or -80°C. Avoid freeze / thaw cycle.

pH: 7.40

Constituents: 89% PBS, 10% Glycerol (glycerin, glycerine), 0.02% DTT

## General Info

---

**Function** Conversion of dopamine to noradrenaline.

**Pathway** Catecholamine biosynthesis; (R)-noradrenaline biosynthesis; (R)-noradrenaline from dopamine: step 1/1.

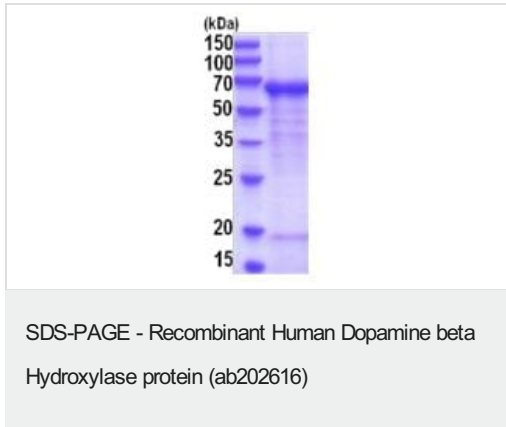
**Involvement in disease** Defects in DBH are the cause of dopamine beta-hydroxylase deficiency (DBH deficiency) [MIM:223360]; also known as norepinephrine deficiency or noradrenaline deficiency. This disorder is characterized by profound deficits in autonomic and cardiovascular function, but apparently only subtle signs, if any, of central nervous system dysfunction.

**Sequence similarities** Belongs to the copper type II ascorbate-dependent monooxygenase family. Contains 1 DOMON domain.

**Cellular localization** Cytoplasmic vesicle > secretory vesicle lumen. Cytoplasmic vesicle > secretory vesicle > chromaffin granule lumen and Cytoplasmic vesicle > secretory vesicle membrane. Cytoplasmic vesicle > secretory vesicle > chromaffin granule membrane.

## Images

---



15% SDS-PAGE analysis of ab202616 (3 µg).

**Please note:** All products are "FOR RESEARCH USE ONLY. NOT FOR USE IN DIAGNOSTIC PROCEDURES"

### Our Abpromise to you: Quality guaranteed and expert technical support

---

- Replacement or refund for products not performing as stated on the datasheet
- Valid for 12 months from date of delivery
- Response to your inquiry within 24 hours
- We provide support in Chinese, English, French, German, Japanese and Spanish
- Extensive multi-media technical resources to help you
- We investigate all quality concerns to ensure our products perform to the highest standards

If the product does not perform as described on this datasheet, we will offer a refund or replacement. For full details of the Abpromise, please visit <https://www.abcam.com/abpromise> or contact our technical team.

### Terms and conditions

---

- Guarantee only valid for products bought direct from Abcam or one of our authorized distributors