

Product datasheet

Recombinant Human Dopamine D2 Receptor protein ab112281

[1 Image](#)

Description

Product name	Recombinant Human Dopamine D2 Receptor protein
Biological activity	useful for Antibody Production and Protein Array
Expression system	Wheat germ
Accession	<u>P14416</u>
Protein length	Protein fragment
Animal free	No
Nature	Recombinant
Species	Human
Sequence	MDPLNLSWYDDDLERQNWSRPFNGSDGKADRPHYNYA TLLTLLIIVIF GNVLVCMMAVSREKALQTTTNYLIVSLAVADLLVATLVMPW VVYLEVVG EW KFSRIHCDIF
Predicted molecular weight	38 kDa including tags
Amino acids	1 to 110
Tags	GST tag N-Terminus

Specifications

Our **Abpromise guarantee** covers the use of **ab112281** in the following tested applications.

The application notes include recommended starting dilutions; optimal dilutions/concentrations should be determined by the end user.

Applications	Western blot SDS-PAGE ELISA Peptide Array
Form	Liquid
Additional notes	This product is useful for Antibody Production and Protein Array.

Preparation and Storage

Stability and Storage

Shipped on dry ice. Upon delivery aliquot and store at -80°C. Avoid freeze / thaw cycles.

pH: 8.00

Constituents: 0.31% Glutathione, 0.79% Tris HCl

Reduced glutathione

General Info

Function

This is one of the five types (D1 to D5) of receptors for dopamine. The activity of this receptor is mediated by G proteins which inhibit adenylyl cyclase.

Involvement in disease

Defects in DRD2 are associated with dystonia type 11 (DYT11) [MIM:159900]; also known as alcohol-responsive dystonia. DYT11 is a myoclonic dystonia. Dystonia is defined by the presence of sustained involuntary muscle contractions, often leading to abnormal postures. DYT11 is characterized by involuntary lightning jerks and dystonic movements and postures alleviated by alcohol. Inheritance is autosomal dominant. The age of onset, pattern of body involvement, presence of myoclonus and response to alcohol are all variable.

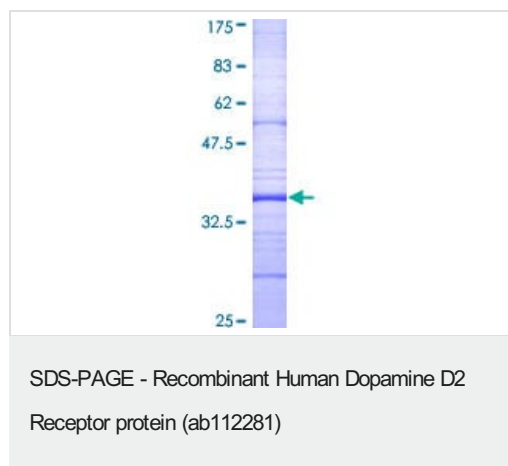
Sequence similarities

Belongs to the G-protein coupled receptor 1 family.

Cellular localization

Cell membrane.

Images



12.5% SDS-PAGE Stained with Coomassie Blue with recombinant protein.

Please note: All products are "FOR RESEARCH USE ONLY. NOT FOR USE IN DIAGNOSTIC PROCEDURES"

Our Promise to you: Quality guaranteed and expert technical support

- Replacement or refund for products not performing as stated on the datasheet
- Valid for 12 months from date of delivery
- Response to your inquiry within 24 hours
- We provide support in Chinese, English, French, German, Japanese and Spanish
- Extensive multi-media technical resources to help you

- We investigate all quality concerns to ensure our products perform to the highest standards

If the product does not perform as described on this datasheet, we will offer a refund or replacement. For full details of the Abpromise, please visit <https://www.abcam.com/abpromise> or contact our technical team.

Terms and conditions

- Guarantee only valid for products bought direct from Abcam or one of our authorized distributors