

Product datasheet

Recombinant Human Dopamine Transporter protein ab112352

★★★★★ [1 Abreviews](#) [1 Image](#)

Description

Product name	Recombinant Human Dopamine Transporter protein
Expression system	Wheat germ
Accession	<u>Q01959</u>
Protein length	Protein fragment
Animal free	No
Nature	Recombinant
Species	Human
Sequence	AWALHYLFSSFTTELPWIHCNNSWNSPNCSDAHPGDSSG DSSGLNDFGT TPAAEYFERGVLHLHQSHGIDDLGPPR
Predicted molecular weight	34 kDa including tags
Amino acids	161 to 237
Tags	GST tag N-Terminus

Specifications

Our **Abpromise guarantee** covers the use of **ab112352** in the following tested applications.

The application notes include recommended starting dilutions; optimal dilutions/concentrations should be determined by the end user.

Applications	SDS-PAGE ELISA Western blot
Form	Liquid

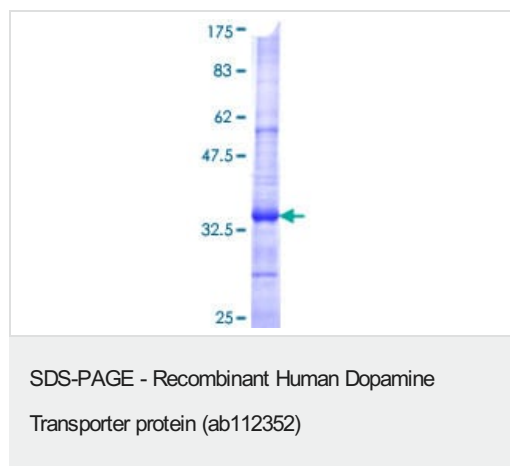
Preparation and Storage

Stability and Storage	Shipped on dry ice. Upon delivery aliquot and store at -80°C. Avoid freeze / thaw cycles. pH: 8.00 Constituents: 0.31% Glutathione, 0.79% Tris HCl
------------------------------	--

General Info

Function	Amine transporter. Terminates the action of dopamine by its high affinity sodium-dependent reuptake into presynaptic terminals.
Involvement in disease	Defects in SLC6A3 are the cause of dystonia-parkinsonism infantile (DYTPRI) [MIM:613135]. It is a neurodegenerative disorder characterized by infantile onset of parkinsonism and dystonia. Other neurologic features include global developmental delay, bradikinesia and pyramidal tract signs.
Sequence similarities	Belongs to the sodium:neurotransmitter symporter (SNF) (TC 2.A.22) family. SLC6A3 subfamily.
Cellular localization	Membrane.

Images



ab112352 analysed on a 12.5% SDS-PAGE gel stained with Coomassie Blue.

Please note: All products are "FOR RESEARCH USE ONLY. NOT FOR USE IN DIAGNOSTIC PROCEDURES"

Our Abpromise to you: Quality guaranteed and expert technical support

- Replacement or refund for products not performing as stated on the datasheet
- Valid for 12 months from date of delivery
- Response to your inquiry within 24 hours
- We provide support in Chinese, English, French, German, Japanese and Spanish
- Extensive multi-media technical resources to help you
- We investigate all quality concerns to ensure our products perform to the highest standards

If the product does not perform as described on this datasheet, we will offer a refund or replacement. For full details of the Abpromise, please visit <https://www.abcam.com/abpromise> or contact our technical team.

Terms and conditions

- Guarantee only valid for products bought direct from Abcam or one of our authorized distributors